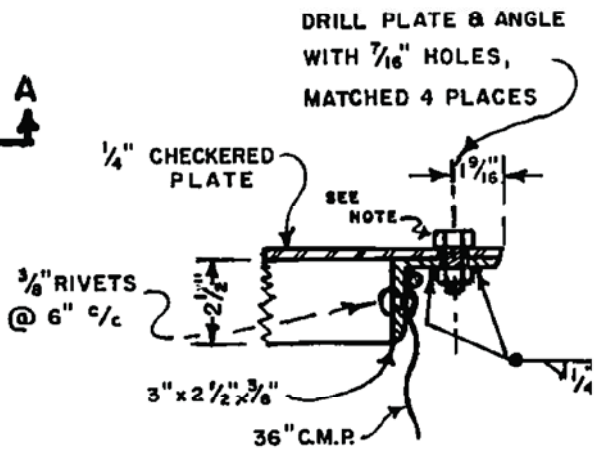
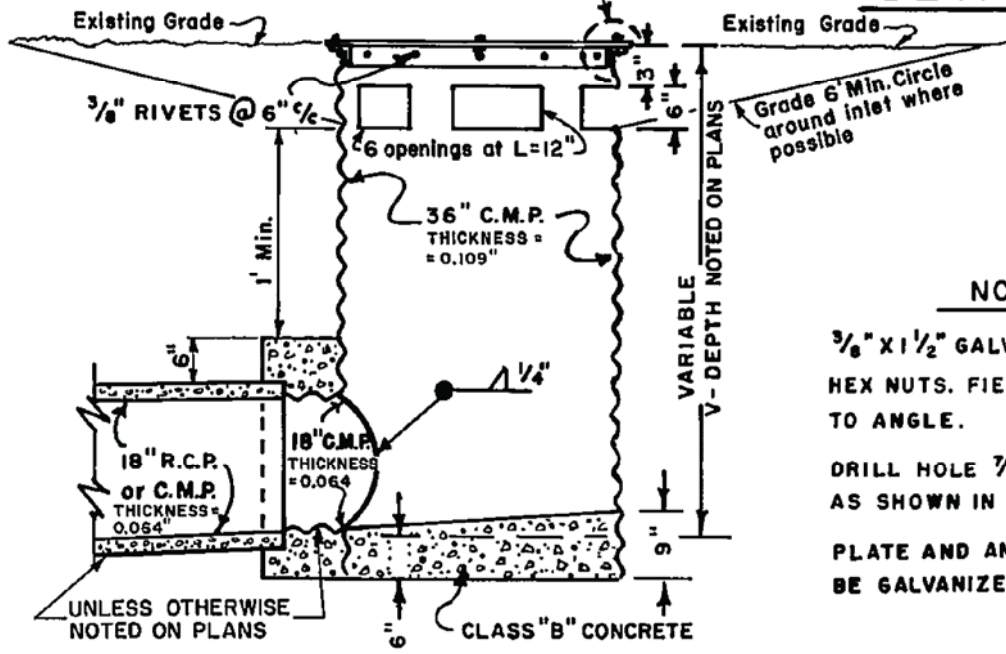


**PLAN**



**DETAIL "B"**

**DETAIL "B"**



**SECTION A-A**

**NOTES**

- $\frac{3}{8}$ " x  $\frac{1}{2}$ " GALVANIZED BOLTS WITH HEX NUTS. FIELD WELD EACH NUT TO ANGLE.
- DRILL HOLE  $\frac{7}{16}$ " MATCHED 4 PLACES AS SHOWN IN PLAN.
- PLATE AND ANGLE ASSEMBLY SHALL BE GALVANIZED.



RIVERSIDE COUNTY FLOOD CONTROL AND WATER CONSERVATION DISTRICT

APPROVED BY: *Warren D. Williams*

CHIEF ENGINEER

DATE: April 5, 2004

**INLET TYPE IX (CHECKERED PLATE) FOR TEMPORARY USE ONLY**

STANDARD DRAWING NUMBER CB107