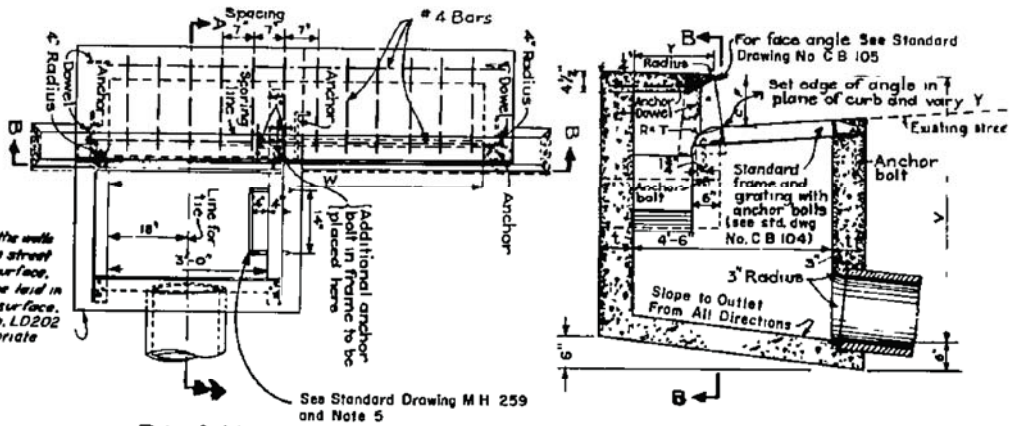
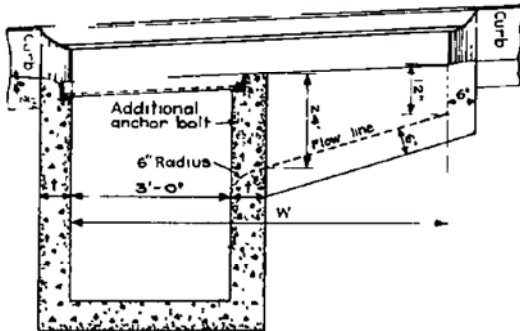


The outer edges of the walls shall conform to the street or local depression surface. The grating shall be laid in the plane of this surface. See Standard Dwg No. LD202 Note (b) for appropriate local depression



PLAN

SECTION A-A



SECTION B-B



NOTES

1. DIMENSIONS: UNLESS OTHERWISE SPECIFIED V = 4.5 FEET. W = 7.0 FEET
T = 6 INCHES IF V IS 5 FEET OR LESS. T = 8 INCHES IF V IS BETWEEN 5 FT. & 8 FEET.
T = 10 INCHES IF V IS 8 FEET OR MORE. Y = 2 FEET 3 INCHES
2. CONCRETE SHALL BE CLASS "A" PORTLAND CEMENT CONCRETE (6.0 SACK).
3. THE REINFORCING STEEL SHALL BE NUMBER 4 DEFORMED BARS. CLEARANCE SHALL BE 1 1/2" FROM THE BOTTOM OF THE SLAB. SEE STANDARD DRAWING CB106-NOTE 3
4. THE SURFACE OF ALL EXPOSED CONCRETE SHALL CONFORM TO SLOPE, GRADE, COLOR, FINISH, AND SCORING IN THE EXISTING OR PROPOSED CURB AND WALK ADJACENT TO THE BASIN. THE BASIN FLOOR SHALL BE GIVEN A TIGHT WOOD FLOAT FINISH. CURVATURE OF THE LIP AND SIDEWALLS AT THE GUTTER OPENING SHALL NOT BE MADE BY PLASTERING. THE OUTLET PIPE SHALL BE TRIMMED TO FINAL SHAPE AND LENGTH BEFORE THE CONCRETE IS POURED.
5. STEPS: 3/4 INCH PLAIN ROUND GALVANIZED STEEL STEPS SHALL BE INSTALLED 16 INCHES APART WHEN V EXCEEDS 4 FEET 6 INCHES. THE TOP STEP SHALL BE 6 INCHES BELOW THE TOP SURFACE AND SHALL BE 2 1/2 INCHES CLEAR FROM THE WALL. ALL OTHER STEPS SHALL BE 4 INCHES CLEAR FROM THE WALL. ONLY ONE STEP 12 INCHES FROM THE BOTTOM SHALL BE INSTALLED IF V IS 4 FEET 6 INCHES OR LESS. ALL STEPS SHALL BE ANCHORED NOT LESS THAN 4 INCHES INTO THE WALL OF THE BASIN.



RIVERSIDE COUNTY FLOOD CONTROL AND WATER CONSERVATION DISTRICT
APPROVED BY: *Warren D. Williams*
CHIEF ENGINEER
DATE: April 5, 2004 R.C.E. NO. 32336

CATCH BASIN NO. 6

STANDARD DRAWING NUMBER CB102