

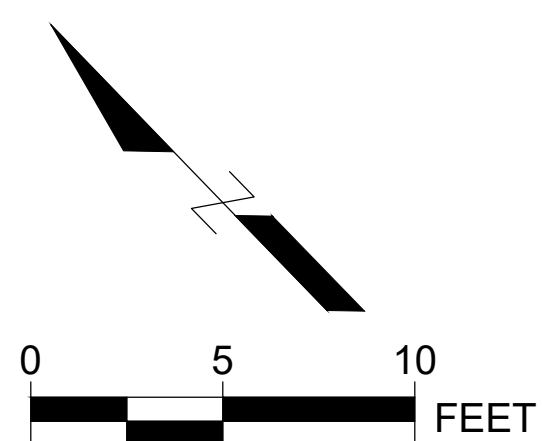
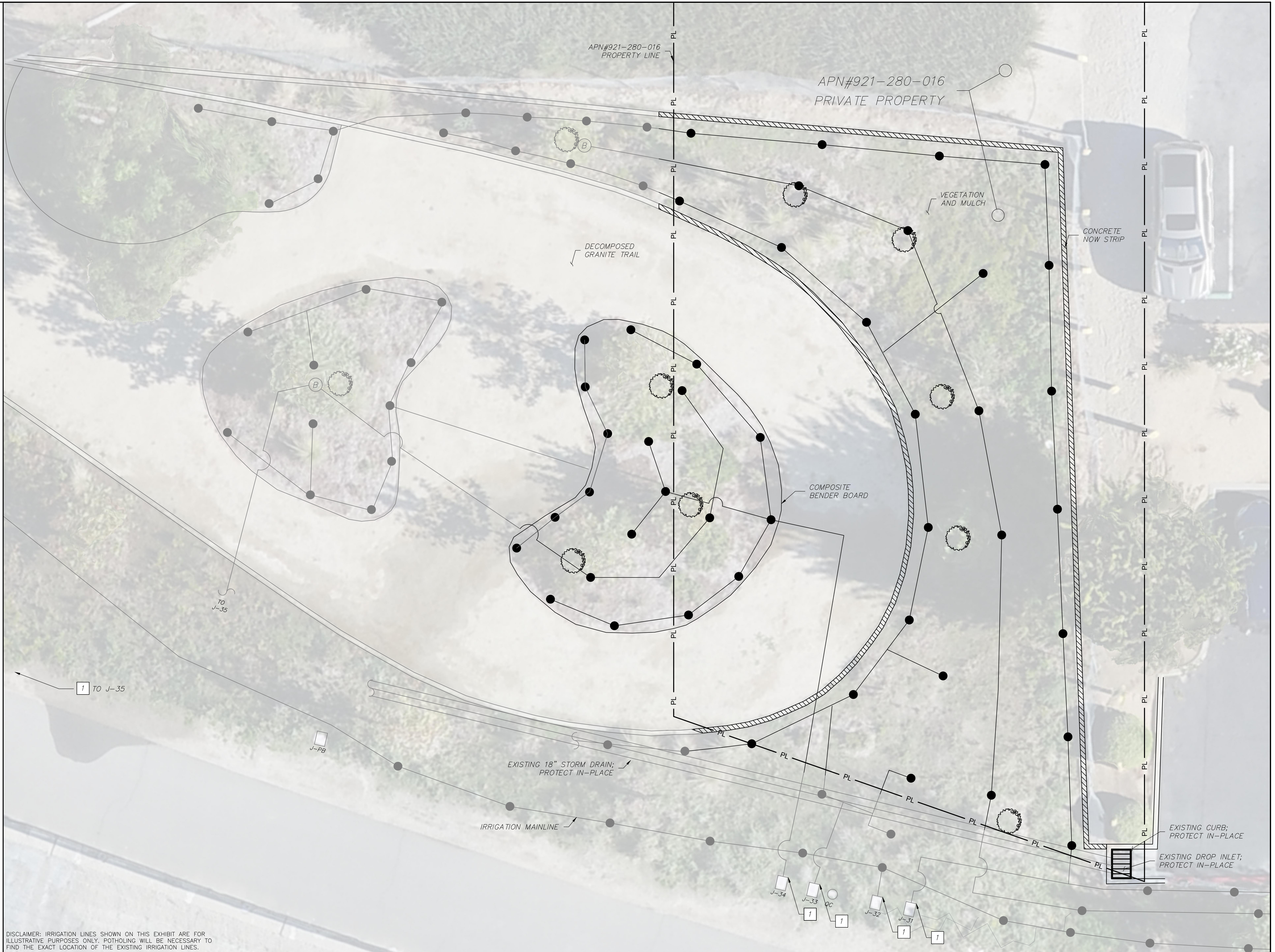
CONSTRUCTION NOTES

7 SHUT OFF RECYCLED WATER AT CONTROL VALVES

LEGEND

- PL ——— PROPERTY LINE
- ——— IRRIGATION LINE AND POP-UP SPRAY HEADS TO BE REMOVED
- ——— EXISTING IRRIGATION LINE WITH POP-UP SPRAY HEADS TO REMAIN IN-PLACE

NOTE: AUTOMATIC IRRIGATION CONTROLLER IS LOCATED NEAR THE EAST BANK MAINTENANCE TRAIL AT FORTH STREET. ADDITIONAL DETAIL CAN BE FOUND ON RECYCLED WATER IRRIGATION PLAN AS-BUILT DATED 10-13-2021 SHEET L-121.



DISCLAIMER: IRRIGATION LINES SHOWN ON THIS EXHIBIT ARE FOR ILLUSTRATIVE PURPOSES ONLY. POTHOLES WILL BE NECESSARY TO FIND THE EXACT LOCATION OF THE EXISTING IRRIGATION LINES.

Don't Dig...Until You Call U.S.A. Toll Free  
1-800-227-2600  
for the location of buried utility lines.  
Don't disrupt vital services.  
TWO WORKING DAYS BEFORE YOU DIG

REVISIONS			
REF.	DESCRIPTION	APPR.	DATE

RIVERSIDE COUNTY FLOOD CONTROL AND WATER CONSERVATION DISTRICT

DESIGNED BY: RLD & MS  
DRAWN BY: RLD & MS  
DATE DRAWN: JUL 2024

RECOMMENDED FOR APPROVAL BY: \_\_\_\_\_  
DATE: \_\_\_\_\_

APPROVED BY: \_\_\_\_\_  
DATE: \_\_\_\_\_

P8 NUMBER: \_\_\_\_\_

MURRIETA CREEK PHASE 2

LANDSCAPING AND IRRIGATION PLAN DISCONNECT PLAN

PROJECT NO. \_\_\_\_\_  
DRAWING NO. \_\_\_\_\_  
SHEET NO. 1 OF 3



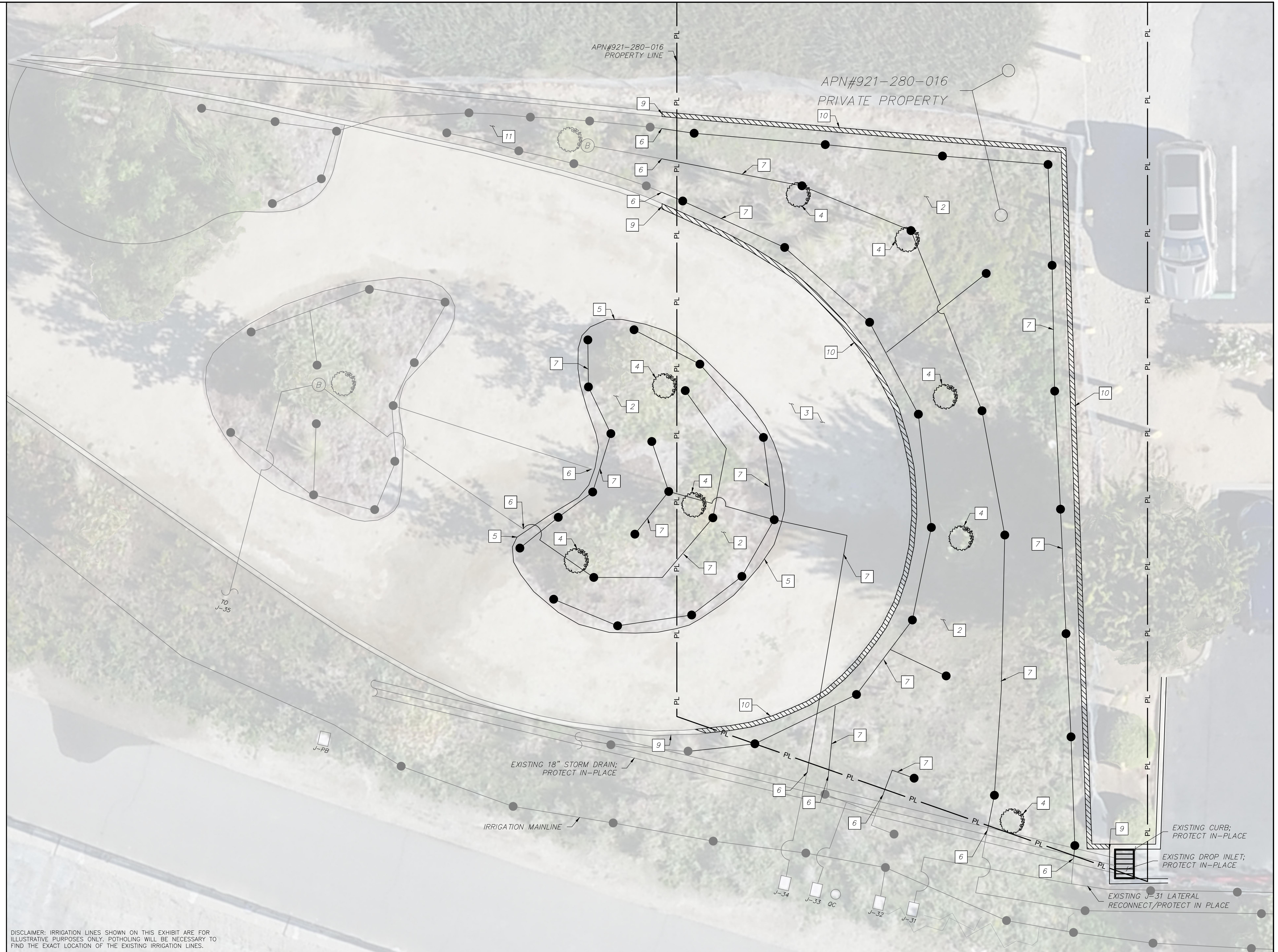
**CONSTRUCTION NOTES**

- 2 REMOVE GROUND COVER VEGETATION AND MULCH.
- 3 REMOVE DECOMPOSED GRANITE TRAIL WITHIN APN 921-280-016.
- 4 REMOVE TREE.
- 5 REMOVE COMPOSITE BENDER BOARD.
- 6 CUT AND CAP RECYCLED WATER IRRIGATION LINE
- 7 REMOVE BUBBLERS, POPUP SPRAY, AND OLD LAVENDER IRRIGATION LINE.
- 9 SAWCUT CONCRETE MOW STRIP APPROX. 1.5' OUTSIDE OF APN 921-280-016 PROPERTY LINE
- 10 REMOVE CONCRETE MOW STRIP
- 11 VEGETATION AND MULCH TO REMAIN IN-PLACE

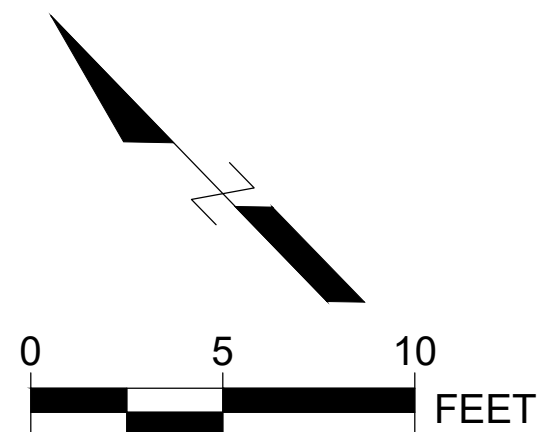
**LEGEND**

- PL — PROPERTY LINE
- IRRIGATION LINE AND POP-UP SPRAY HEADS TO BE REMOVED
- EXISTING IRRIGATION LINE WITH POP-UP SPRAY HEADS TO REMAIN IN-PLACE

NOTE: AUTOMATIC IRRIGATION CONTROLLER IS LOCATED NEAR THE EAST BANK MAINTENANCE TRAIL AT FORTH STREET. ADDITIONAL DETAIL CAN BE FOUND ON RECYCLED WATER IRRIGATION PLAN AS-BUILT DATED 10-13-2021 SHEET L-121.



DISCLAIMER: IRRIGATION LINES SHOWN ON THIS EXHIBIT ARE FOR ILLUSTRATIVE PURPOSES ONLY. POTHOLES WILL BE NECESSARY TO FIND THE EXACT LOCATION OF THE EXISTING IRRIGATION LINES.



Don't Dig...Until You Call U.S.A. Toll Free  
1-800-227-2600  
for the location of buried utility lines.  
Don't disrupt vital services.  
TWO WORKING DAYS BEFORE YOU DIG

REVISIONS			
REF.	DESCRIPTION	APPR.	DATE

RIVERSIDE COUNTY FLOOD CONTROL AND WATER CONSERVATION DISTRICT

DESIGNED BY: RLD & MS  
DRAWN BY: RLD & MS  
DATE DRAWN: JUL 2024

RECOMMENDED FOR APPROVAL BY: \_\_\_\_\_  
DATE: \_\_\_\_\_

APPROVED BY: \_\_\_\_\_  
DATE: \_\_\_\_\_

P8 NUMBER: \_\_\_\_\_

MURRIETA CREEK PHASE 2  
**LANDSCAPING AND IRRIGATION PLAN  
DEMOLITION PLAN**


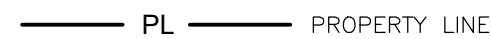


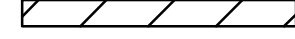
PROJECT NO.	
DRAWING NO.	
SHEET NO.	2 OF 3



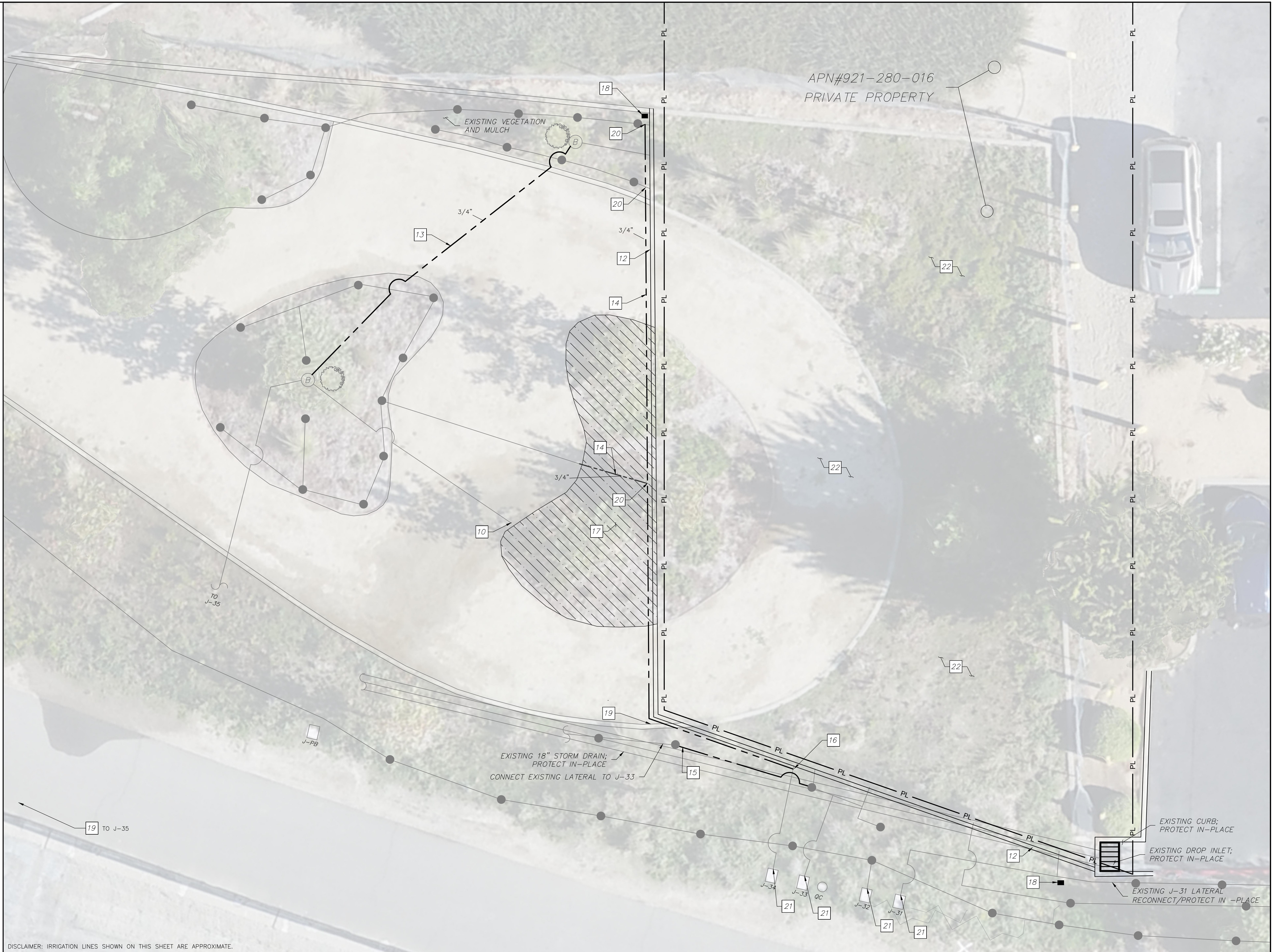
**CONSTRUCTION NOTES**

- 12 CONSTRUCT CONCRETE MOW STRIP SEPARATION PER RANCHO WATER STD. DRAWING NO. 05-11.
- 13 CONSTRUCT LATERAL PIPING LAVENDER COLOR AS DESCRIBED IN DETAIL N/L-128. CONNECT TREE BUBBLER IRRIGATION LINE TO CONTROL VALVE J-35.
- 14 CONSTRUCT LATERAL PIPING LAVENDER COLOR AS DESCRIBED IN DETAIL N/L-128. CONNECT IRRIGATION LINE TO CONTROL VALVE J-34.
- 15 CONNECT NEW LATERAL PIPING TO PIPE CONNECTED TO CONTROL VALVE J-33.
- 16 CONNECT NEW LATERAL PIPING TO PIPE CONNECTED TO CONTROL VALVE J-34.
- 17 INSTALL 2" OF D.G. FLUSH WITH EXISTING D.G.
- 18 INSTALL SIGNS IN ENGLISH AND SPANISH READING "RECYCLED WATER. DO NOT DRINK" PER RANCHO WATER STD. DRAWING NO. 05-4.
- 19 REPAIR DECORATIVE LANDSCAPE CURB.
- 20 CONNECT EXISTING LATERAL PIPING TO NEW LATERAL PIPING.
- 21 TURN ON RECYCLED WATER AT CONTROL VALVES.
- 22 RETURN TO ORIGINAL GRADE.

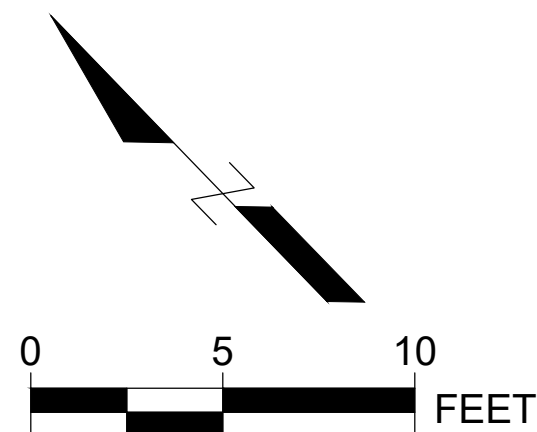
**LEGEND**

-  LIMITS OF CONSTRUCTION
-  PROPERTY LINE
-  EXISTING IRRIGATION LINE WITH POPUP SPRAY HEADS TO REMAIN IN-PLACE
-  NEW IRRIGATION LINE
-  CURB TO BE REMOVED

NOTE: AUTOMATIC IRRIGATION CONTROLLER IS LOCATED NEAR THE EAST BANK MAINTENANCE TRAIL AT FORTH STREET.



DISCLAIMER: IRRIGATION LINES SHOWN ON THIS SHEET ARE APPROXIMATE.



Don't Dig...Until You Call U.S.A. Toll Free  
1-800-227-2600  
for the location of buried utility lines.  
Don't disrupt vital services.  
  
TWO WORKING DAYS BEFORE YOU DIG

REVISIONS			
REF.	DESCRIPTION	APPR.	DATE

**RIVERSIDE COUNTY FLOOD CONTROL AND WATER CONSERVATION DISTRICT**

DESIGNED BY: RLD & MS	RECOMMENDED FOR APPROVAL BY:	APPROVED BY:
DRAWN BY: RLD & MS	DATE: _____	DATE: _____
DATE DRAWN: JUL 2024	P8 NUMBER:	

**MURRIETA CREEK PHASE 2**

**LANDSCAPING AND IRRIGATION PLAN RECONNECT PLAN**

PROJECT NO.	--
DRAWING NO.	--
SHEET NO.	3 OF 3