



**RIVERSIDE COUNTY FLOOD
CONTROL & WATER
CONSERVATION DISTRICT**

COMMUNITY MEETING

The Lakeview / Nuevo Community is invited to meet with the District to discuss the **Lakeview/Nuevo MDP Laterals D&E Storm Drain Project**.

The meeting will cover the following:

- Project objectives and benefits
- Plans to keep Waters Ave private
- Address community questions/concerns
- Next steps



6:00 PM - 7:30 PM



April 18, 2024



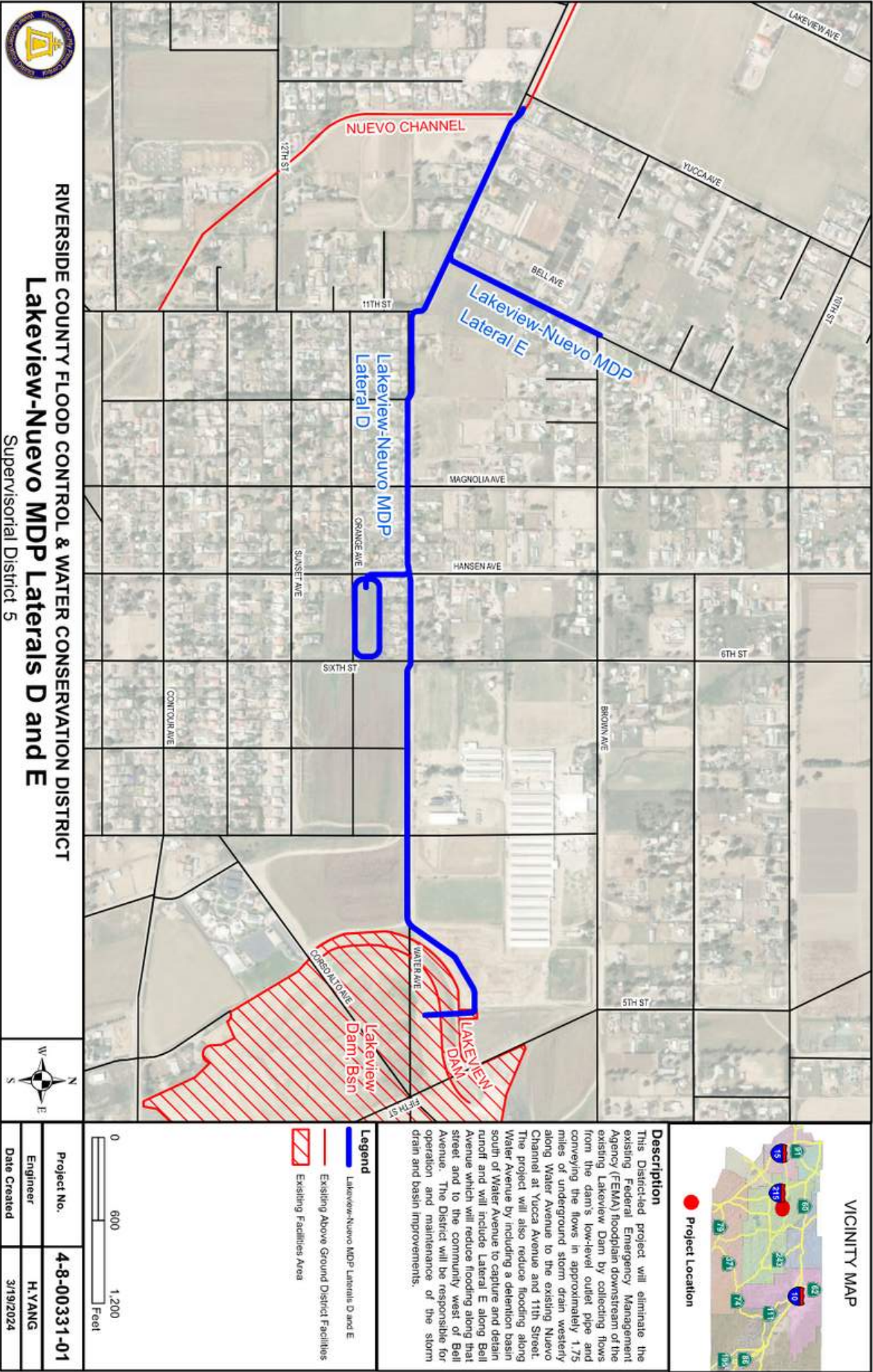
**29780 Lakeview Ave
Nuevo, CA 92567**

Visit Our Website and Follow us
www.RCFLOOD.com

@RIVCOFLOOD



For specific questions to the project,
contact **Ryan Gosliga** at **rgosliga@rivco.org**





**RIVERSIDE COUNTY FLOOD
CONTROL & WATER
CONSERVATION DISTRICT**

REUNIÓN COMUNITARIA

La Comunidad de Lakeview / Nuevo está invitada a una reunión con el Distrito para discutir el **Proyecto de Drenaje de Lakeview/Nuevo MDP Laterals D&E**.

La discusión incluirá:

- Objetivos y beneficios del proyecto
- Planes para mantener Waters Ave. privada
- Responder a las preguntas y dudas de la comunidad
- Próximas etapas



6:00 PM - 7:30 PM



18 de Abril, 2024



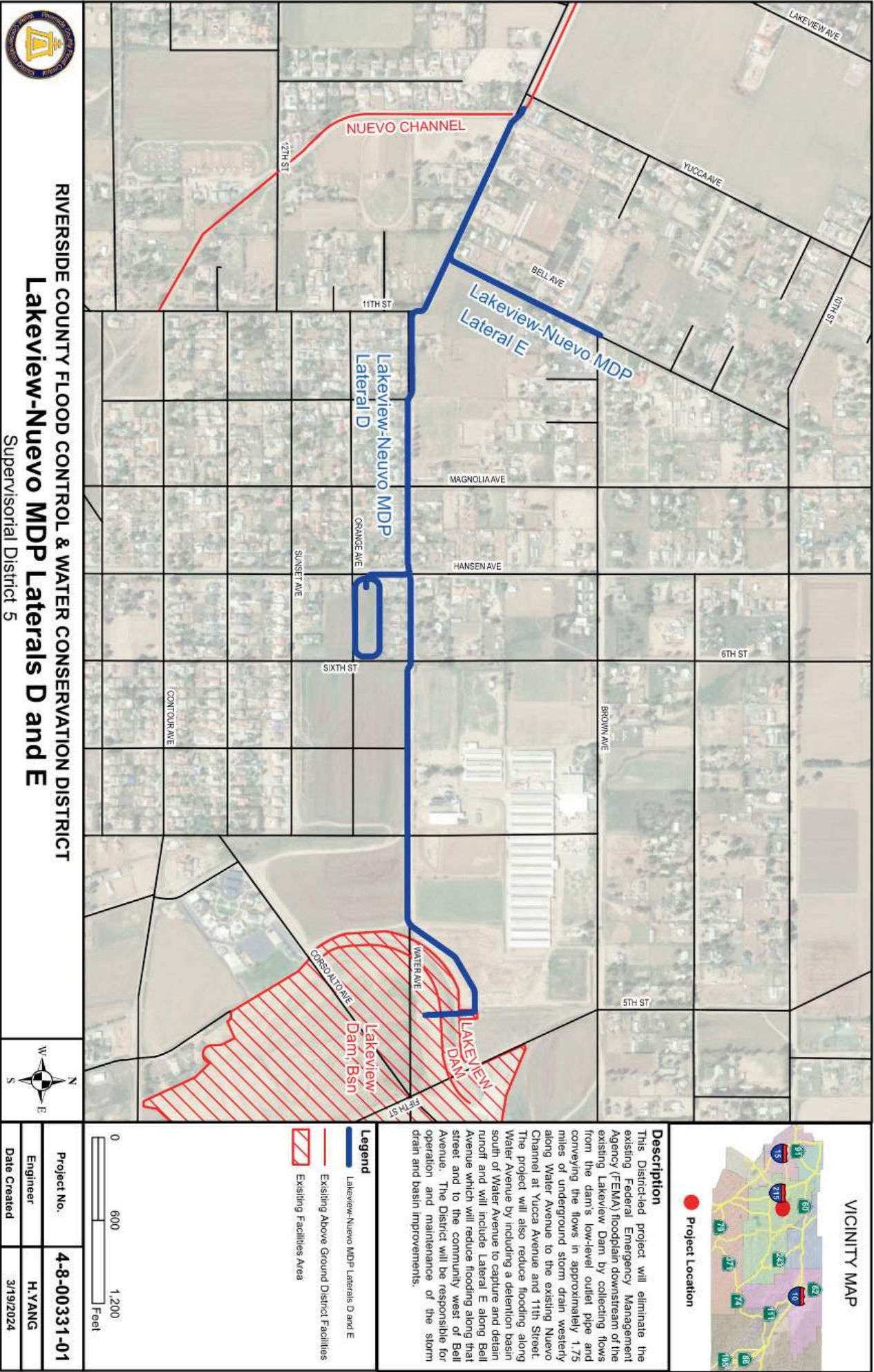
**29780 Lakeview Ave
Nuevo, CA 92567**

Para preguntas específicas sobre el proyecto, póngase en contacto con **Ryan Gosliga** escribiendo a **rgosliga@rivco.org**

Visite Nuestra Página Web y Siganos
www.RCFLOOD.com

@RIVCOFLOOD



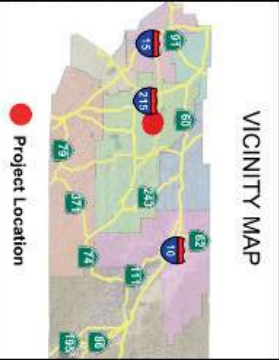




RIVERSIDE COUNTY FLOOD CONTROL & WATER CONSERVATION DISTRICT
Lakeview-Nuevo MDP Laterals D and E
Supervisory District 5



Project No. 4-8-00331-01
Engineer H. YANG
Date Created 3/19/2024

VICINITY MAP


● Project Location

Description

This Districted project will eliminate the existing Federal Emergency Management Agency (FEMA) floodplain downstream of the existing Lakeview Dam by collecting flows from the dam's low-level outlet pipe and conveying the flows in approximately 1.75 miles of underground storm drain westerly along Water Avenue to the existing Nuevo Channel at Yucca Avenue and 11th Street. The project will also reduce flooding along Water Avenue by including a detention basin south of Water Avenue to capture and detain runoff and will include Lateral E along Bell Avenue which will reduce flooding along that street and to the community west of Bell Avenue. The District will be responsible for operation and maintenance of the storm drain and basin improvements.

Legend

-  Lakeview-Nuevo MDP Laterals D and E
-  Existing Above Ground District Facilities
-  Existing Facilities Area

Meeting Date: April 18, 2024
Time: 6:00-7:30 PM, PST
Subject: Lakeview-Nuevo MDP Laterals D&E
Location: 29780 Lakeview Ave.; Nuevo, Ca 92567

Meeting Q&A

I. Design

1. How many inlets are there in Water Ave.?

A: The District is still working on the inlet design along the project alignments, but that information can be shared with the residents as the District moves forward with design efforts. The goal is to install the inlets at the locations where is safe and alleviate major flood hazards.

2. How far can the inlet extend from the mainline (from Water Ave. to Brown Ave.)?

A: The storm drains are gravity controlled, so if we can achieve natural gravity drainage, we can build lines as long as necessary. The District will investigate extending inlets from Water Ave. to Brown Ave. if the ponding issues are not already solved by the rest of the system alignment.

3. What are the sizes of the pipes?

A: 18in to 72in concrete pipes (and 7'Wx6.5'H concrete box).

4. Will Lateral A collect the water from Contour Ave., Electric Ave., Hansen Ave. and Sunset Ave.?

A: The Lateral A Restoration project will primarily pickup flows from the intersection of Contour and 11th St. The flows along Electric, Hansen, and Sunset are within the tributary area for Laterals D & E project.

5. The proposed facility should build inlets in Orange Ave., Yucca Ave., Electric Ave., Brown Ave., Hansen Ave. and Meadow Blossom Rd., not in Water Ave., because Water Ave. has minimal flooding issues. The flood comes from Contour Ave. down to the tree line (Brosseau Ave.).

A: The proposed alignment on Water Ave. is not just serving Water Ave. but serves as a capture to stop floodplain flows that travel North-Westerly through this community. The project will also provide a controlled outlet for the Dam instead of releasing flows to the area north of Water Ave. There could be nuisance flow north of the facility and we can investigate if it is necessary that another storm drain line be installed. The proposed alignments are a based on general drainage patterns by mapping the topography through the community.

6. Which side of the road will the proposed pipe be located?

A: The pipe shifts from south to north as it makes its way across Water Ave. to avoid utilities or any obstructions.

7. Is there going to be inlets in Brosseau Ave. and Water Ave.?

A: Yes, we have been working with the residents along Brosseau because there is a heavy concentration of flow that comes down the tree lines. And we will provide an inlet at the intersection of Brosseau Ave and Water Ave.

8. Can the flows along Orange St., Sunset Ave., Electric Ave., Contour Ave. be routed westerly towards 11st St. instead of draining into the tree line along Brosseau Ave.?

A: Since the Brosseau Ave. crossing is privately owned and maintained, it appears the residents have opted to close the crossing to discourage off-roading and other travel access. However, the District will provide inlet at the intersection of Water Ave. and Brosseau Ave. to collect the water coming from upstream of Brosseau Ave.

9. How far apart are the manholes distanced from each other? Are the manholes covered?

A: The manholes are typically 300-500ft apart from each other, and the manhole covers are bolted shut.

10. What is the grade percentage of the pipe?

A: The slope varies at different locations however the minimum grade of storm drain is 0.3% to ensure gravity drainage.

11. What is the approximate volume of soil to be excavated?

A: The excavation volume can be estimated as we further the design and have more detailed design plans.

12. How deep is the pipe?

A: Up to 20 ft (~17ft to pipe crown ~23ft to pipe invert at some locations).

13. How current are the floodplain models?

A: The District will confirm the date of the current models. If there are no significant changes that would result in alteration of the existing topography (such as new development), the drainage patterns remain the same.

14. When was the infrastructure planned?

A: The District's Master Drainage Plan for this area was approved by the Board of Supervisors in the 1980's, which gave birth to the local infrastructure plans. This included the Nuevo Channel built in the 1980's and the Nuevo Dam built in the 1990's.

II. Construction

1. When will the project start?

A: As of right now, the District is focusing on getting the necessary easements for project, which involves coordination with the owners along Water Ave. This coordination could take time so the construction schedule is unknown at this time.

2. Are the construction contractors from the District or an outside construction company?

A: The District will seek a public bid where we advertise the project and we award the lowest bid per the County policy. The District oversees the hired contractor to perform the job and ensures they follow the District standards.

3. Are the project inspectors from the District or from the hired contractor?

A: The project inspectors are the District staff.

4. If a contractor stages/operates equipment near a property and damaged a wall, for example, how will the residents be protected?

A: The contractor will be liable for any damages they cause during construction. Also, the contractor will be required to get permission from resident's if they wish to stage/operate beyond the project footprints.

5. Will the roads and driveways be blocked during construction?

A: No, road access will be provided 24/7 by the contractor. There may be times where the contractor needs to close access for a short period of time, but they need permission to do so from impacted residents.

6. Will the District improve Water Ave. or install asphalt?

A: No, the District will restore Waters Ave to its pre-construction condition. The only changes in Water Ave. will be manhole lids and collection inlets for the storm drain.

III. ROW

1. Can the District use Edison's existing easement?

A: The District can revisit and investigate what rights Edison has and inquire if they will allow a partnership. If not, the District will need to secure its own easement outside of Edison's easement.

2. Does everyone need to be on board to make this project happen?

A: Yes.

3. Will the project allow Transportation to make Water Ave. a public road?

A: No, the easements will remain an agreement between each resident and the District without ability to transfer rights to another agency. Also, Transportation has stated in the last MAC meeting that there are no plans to improve Water Ave. or create a public road system.

4. When will the funding for this project be available?

A: The funding has been secured in the District's Capital Improvement Project (CIP) budget. The CIP process revisits the project cost annually and updates as needed to account for inflation.

IV. Maintenance:

1. How often do the pipes need to be repaired and how will maintenance occur within the private roadway?

A: The District has the responsibility to repair the constructed facilities. The residents will be contacted if any repairs are necessary, however unlikely. Once a storm drain is installed it rarely sees maintenance unless a major issue, such as settlement of soils. The District has a lot of construction policies and procedures to make sure the installed facilities do not have issues that need frequent repair.

2. How often will the pipes get cleaned, especially the area near the tree line because of silt?

A: Typically, the inlets are the main focus of cleaning since they are the first source of clogging. The District will ensure inlets are maintained as needed to keep them clear and functioning properly.

3. How does the District maintain the pipe?

A: The District has its own Operations and Maintenance crews to address most issues. In some cases, the District may hire contractors to perform necessary maintenance.

4. If the roads are to remain private, who is responsible for issues once a storm drain is installed?

A: Since Water Ave. is an unimproved roadway (mostly dirt road along the alignment) it will see continued erosion issues that are typical and historic in this area and those responsibilities will remain with the private owners. If however, there is an issue that was caused by the storm drain project, for example a settlement due to poor compaction, then the District will be responsible for addressing and repairing those issues.