

PUBLIC REVIEW DRAFT

CITY OF TEMECULA
STORMWATER MANAGEMENT PLAN

May 23, 2005

TABLE OF CONTENTS

| <u>SECTION</u> | <u>PAGE</u> |
|--------------------------------------------------------------------------|-------------|
| 1.0 EXECUTIVE SUMMARY | 1 |
| 2.0 INTRODUCTION TO THE CITY OF TEMECULA STORMWATER MANAGEMENT PLAN..... | 2 |
| 2.1 Program Overview | 2 |
| 2.2 Description of MS4..... | 2 |
| 3.0 PROGRAM MANAGEMENT | 4 |
| 3.1 Permittee Departmental Responsibilities | 4 |
| 3.2 Watershed and Permittee Cooperative Activities | 6 |
| 3.3 Fiscal Analysis | 7 |
| 3.4 Legal Authority..... | 8 |
| 3.5 Enforcement..... | 10 |
| 4.0 ELIMINATION OF ILLICIT CONNECTIONS AND ILLEGAL DISCHARGES | 11 |
| 5.0 MUNICIPAL FACILITIES AND ACTIVITIES | 14 |
| 5.1 Planning Public Agency Facilities | 14 |
| 5.2 Public Agency Construction Activities..... | 14 |
| 5.3 Operation and Maintenance of Public Agency Facilities..... | 14 |
| 5.4 Fire BMPs | 15 |
| 5.5 Training for Municipal Maintenance Employees | 15 |
| 6.0 DEVELOPMENT PLANNING | 16 |
| 6.1 Introduction..... | 16 |
| 6.2 General Plan..... | 16 |
| 6.2.1 General Plan Review and Amendment..... | 16 |
| 6.3 CEQA Environmental Review Process | 17 |
| 6.4 Development Project Review, Approval, and Permitting..... | 18 |
| 6.5 Training..... | 18 |
| 7.0 PRIVATE DEVELOPMENT CONSTRUCTION ACTIVITY | 19 |
| 7.1 Construction Site Inventory | 19 |
| 7.2 Construction Site Inspection..... | 19 |
| 8.0 INDUSTRIAL AND COMMERCIAL SOURCES | 20 |
| 8.1 Industrial/Commercial Facility Database | 20 |
| 8.2 SMR Minimum BMPs for Industrial/Commercial Facilities..... | 20 |
| 9.0 RESIDENTIAL SOURCES | 22 |
| 9.1 High Priority Residential Activities..... | 22 |

9.2 Minimum BMPs for Residential Activities 22

9.3 Enforcement..... 22

10.0 PUBLIC EDUCATION AND OUTREACH..... 24

11.0 MONITORING PROGRAM..... 25

12.0 PROGRAM REPORTING, EVALUATION, AND REVISION..... 27

List of Tables

Table 3-1. SWMP Departmental Responsibilities 6

Table 3-2. Ordinances Providing Legal Authority..... 9

List of Figures

Figure 2-1. SWMP Program Elements 3

Figure 3-1. SWMP Organizational Chart 5

Figure 3-2. Fiscal Analysis of Capital Expenditures and O&M Costs 7

Appendices

- A Certification of Legal Authority
- B Inventory of Municipal Facilities
- C Schedules for Municipal Maintenance Activities
- D Project Application Form
- E Initial Study Checklist
- F Construction Site Inventory
- G Construction Site Inspection Form
- H Industrial and Commercial Facility Inventory

1.0 EXECUTIVE SUMMARY

This Stormwater Management Plan (SWMP) describes the specific urban runoff management programs and activities that will be implemented to comply with the requirements of the municipal separate storm sewer system (MS4) Permit issued to the Riverside County Permittees by the San Diego Regional Water Quality Control Board (Regional Board) in 2004. This is the third MS4 permit issued by the Regional Board and is referred to as the “Third-term” MS4 Permit. This SWMP addresses the items listed in Attachment D to the Third-term MS4 Permit, providing a description of the programs and activities that the City of Temecula is implementing or plans to implement to comply with the Third-term MS4 Permit and to reduce pollutants in Urban Runoff to the Maximum Extent Practicable (MEP).

In general, this SWMP provides additional detail regarding implementation of the programs described in the Riverside County Drainage Area Management Plan (DAMP). The DAMP describes the overall Urban Runoff management strategies being implemented, or planned to be implemented, by the Permittees in the Santa Ana and Santa Margarita Regions of Riverside County during the 5-year terms of the Third-term MS4 Permit. The DAMP has been prepared to meet the complex Urban Runoff management needs in the Santa Ana and Santa Margarita Regions consistent with the Third-term MS4 Permits. The DAMP reflects the needs and constraints of the Permittees, while meeting the requirements of the Third-term MS4 Permits. The terms and acronyms used in this SWMP are defined in the glossary included in the DAMP.

For purposes of this SWMP, the terms “Watershed Storm Water Management Plan (Watershed SWMP)” and “Standard Urban Stormwater Management Plan (SUSMP)” referenced in the Santa Margarita Region Permit are referred to as the “DAMP” and “Water Quality Management Plan (WQMP),” respectively to be consistent with terminology established and in use by the Permittees.

2.0 INTRODUCTION TO THE CITY OF TEMECULA STORMWATER MANAGEMENT PLAN

2.1 PROGRAM OVERVIEW

The regulatory framework that provides the foundation for the Third-term MS4 Permit, and therefore this SWMP, is described in Riverside County DAMP. This SWMP is a programmatic document developed by the City of Temecula to describe its specific ordinances, plans, policies and procedures necessary to manage Urban Runoff and comply with the Third-term MS4 Permit. This SWMP together with the Riverside County DAMP are the principal documents that comprehensively translate the Third-term MS4 Permit requirements into programs and implementation plans for the City of Temecula. The various program elements of this SWMP are depicted in Figure 2-1.

2.2 DESCRIPTION OF MS4

The major MS4 facilities owned and operated by the City of Temecula and regulated under the Third-term MS4 Permit consist of:

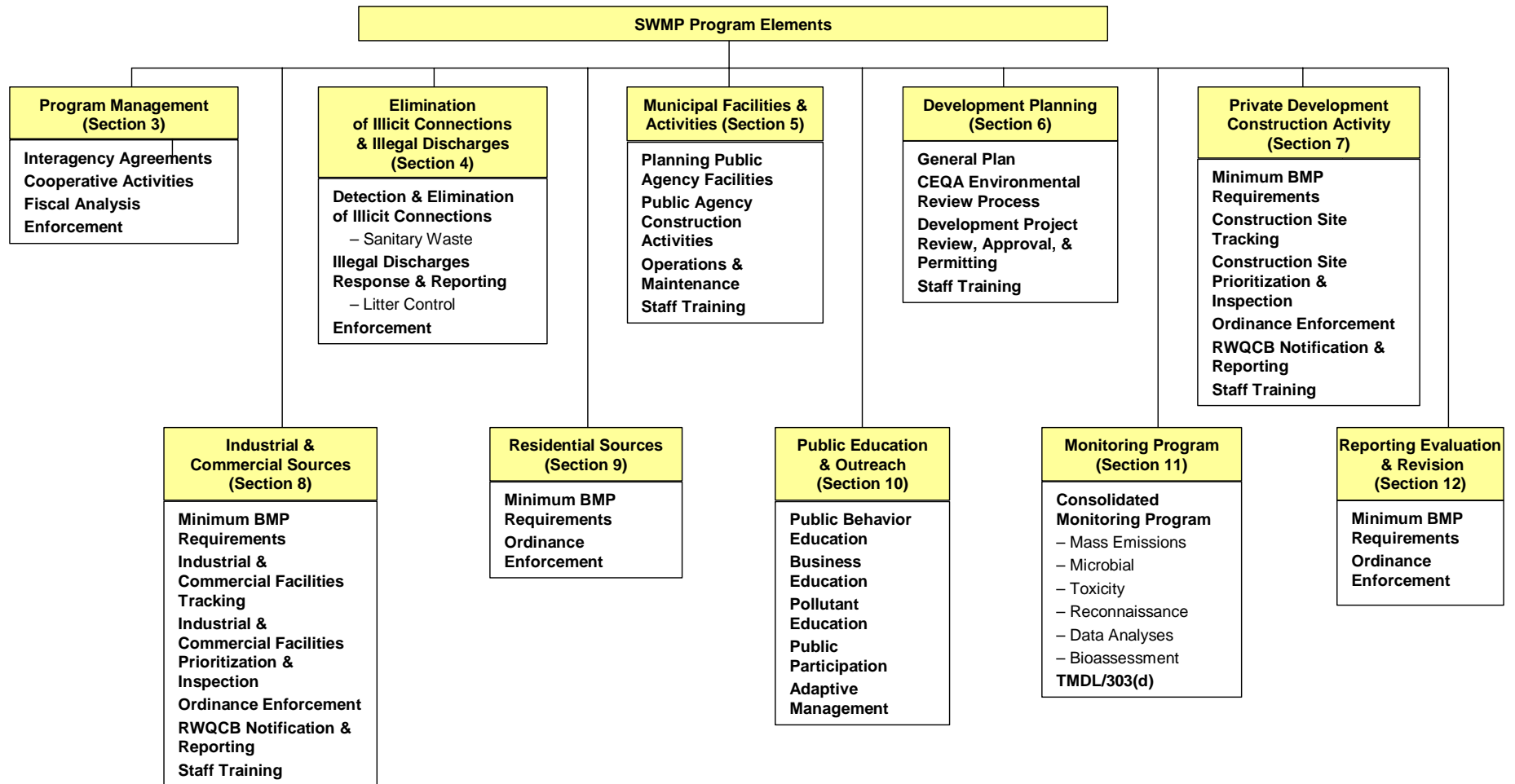
- ◆ 52 miles of city-maintained underground storm drains and
- ◆ 7 miles of improved open channels (excludes undisturbed natural creeks).

The City of Temecula maintains a map of the MS4 facilities that it owns and operates. Each year, the City updates this map and identifies modifications and additions to its major MS4 facilities in the Annual Report to the Regional Board.

Additionally, within the jurisdictional boundaries of the City of Temecula stormwater drainage facilities that are owned and operated by other entities consist of:

- ◆ 2 miles of private ownership underground storm drains (e.g., home owners association) and
- ◆ 22 miles of underground storm drains owned and operated by the Riverside County Flood Control and Water Conservation District.

Figure 2-1. SWMP Program Elements



3.0 PROGRAM MANAGEMENT

3.1 PERMITTEE DEPARTMENTAL RESPONSIBILITIES

There are multiple departments with responsibility to implement elements of this SWMP and to meet the requirements of the Third-term MS4 Permit. An organizational chart depicting the departments and key personnel (position title) with implementation responsibilities is shown in Figure 3-1. Additionally, Table 3-1 is a matrix showing each SWMP element, the departments with implementation responsibilities, the specific responsibilities of each department/organizational unit, and the key personnel by position title.

3.2 WATERSHED AND PERMITTEE COOPERATIVE ACTIVITIES

Interagency agreements and other cooperative activities supporting the implementation of the Third-term MS4 Permit requirements are described in the Riverside County DAMP. Modifications to the interagency agreements and changes in the cooperative activities are described in annual reporting to the Regional Board.

Figure 3-1. SWMP Organizational Chart

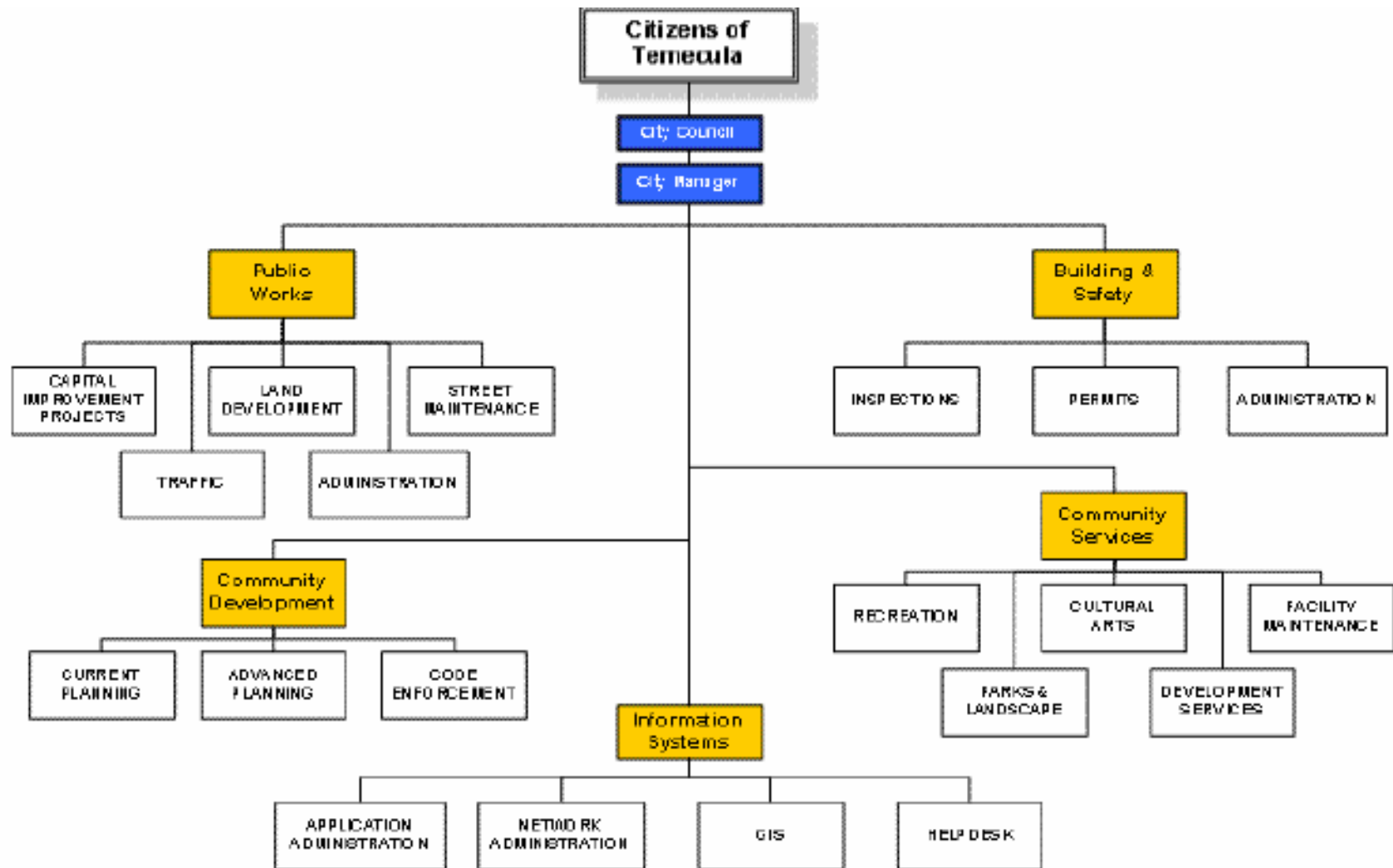


Table 3-1. SWMP Departmental Responsibilities

| Program Element | Department(s) or Division(s) | Responsibilities | Key Personnel |
|------------------------------------------------------------------|--------------------------------------------------------------------------------------|-------------------------------------------------------------------------------------------------------------------------------------------------------------------------------------------------------------------------------------------------------------------|-------------------------------------------------------------------------------------------------------------|
| Program Management | Land Development (Public Works) | Overall program implementation; permit compliance; data tracking; document production (SWMP, annual reports, etc.); designate minimum BMP requirements; program reporting. | NPDES engineer. |
| Elimination of Illicit Connections & Illegal Discharges (Sec. J) | Land Development Code Enforcement Information Systems Maintenance | Dry-weather monitoring; responding to complaints regarding illicit connections and illegal discharges; maintenance of the MS4 map; enforcement of ordinances; elimination of illegal discharges and removal of illicit connections. | NPDES engineer. Code Enforcement officer. GIS specialist. Maintenance superintendent. |
| Municipal Facilities & Activities (Sec. H.1) | Land Development Community Services CIP Maintenance | Maintenance of city-owned infrastructure (ie streets, MS4); Maintenance of landscape and facilities (ie. parks, medians, slopes, recreation facilities, administrative offices); Coordinate annual NPDES training; maintenance of municipal facilities inventory. | NPDES engineer. Recreation superintendent. Principle engineer. Maintenance superintendent. |
| Development Planning (Sec. F) | Land Development Planning | General Plan review and updates; revisions to the project approval process; CEQA compliance; Conditioning for Approval; Coordinate annual NPDES training; WQMP review and approval. | NPDES engineer. Associate engineer. Principle planner. Associate planner. |
| Private Construction (Sec. G) | Land Development Building & Safety Code Enforcement | Maintenance of inventory of construction sites; planchecks; Conditioning for Approval; Issuing Grading and Construction Permits; Field Inspections; Coordinate annual NPDES training; enforcement of ordinances. | NPDES engineer. Land Development and Building plancheckers and inspectors. Code Enforcement officers. |
| Industrial & Commercial Sources (Sec. H.2) | Land Development Code Enforcement Riverside County | Maintenance of Ind/Com facilities list; Coordinate annual NPDES training; field inspections; reporting industrial non-filers; enforcement of ordinances. | NPDES engineer. Code Enforcement officers. Environmental Health and Haz Mat. |
| Residential Sources (Sec. H.3) | Land Development Code Enforcement | Provide public education to residents regarding minimum BMP requirements; enforcement of ordinances. | NPDES engineer. Code Enforcement officers. |
| Public Education & Outreach (Sec. E.3 and I) | Riverside County Flood Control District Land Development Community Services | Work with the principle permittee to prepare brochures, posters, and educational materials for the general public; implement recycling programs; attend community outreach events. | Public Education Coordinator. NPDES engineer. Director of Community Services. |
| Monitoring | Land Development Riverside County Flood Control District | Implement dry-weather monitoring; assist Principle Permittee with wet-weather monitoring. | NPDES engineer. Riverside County Flood Control District. |
| Program Reporting, Evaluation, and Revision | Land Development | Gather data from applicable departments (Building, Finance, Comm. Services, Code Enforcement, Information Systems, CIP, Maintenance, planning, etc); preparation of annual reports, submittal of information to Principle Permittee. | NPDES engineer. |

3.3 FISCAL ANALYSIS

City of Temecula makes capital expenditures and incurs operation and maintenance (O&M) costs to implement this SWMP and to meet the requirements of the Third-term MS4 Permit. Each year the City of Temecula reports its capital expenditures and O&M costs incurred during the preceding fiscal year and the budgeted capital expenditures and O&M costs planned for the next fiscal year in the Annual Report. The form presented in Figure 3-2 is used for reporting the fiscal information.

Figure 3-2. Fiscal Analysis of Capital Expenditures and O&M Costs

| Program Element | Fiscal Year 200X-200Y | | Fiscal Year 200Y-200Z | |
|---------------------------------------------------------|----------------------------|-----------------|----------------------------|-----------------|
| | Capital Expenditures (\$k) | O&M Costs (\$k) | Capital Expenditures (\$k) | O&M Costs (\$k) |
| Program Management | | | | |
| Annual Fee for MS4 NPDES Permit | | | | |
| Implementation Agreement Shared Cost | | | | |
| Elimination of Illicit Connections & Illegal Discharges | | | | |
| Municipal Facilities and Activities | | | | |
| Planning & Constructing Facilities | | | | |
| MS4 Maintenance | | | | |
| Development Planning | | | | |
| Private Development Construction (Inspections) | | | | |
| Industrial and Commercial Sources (Inspections) | | | | |
| Public Education & Outreach | | | | |
| Residential Sources | | | | |
| Monitoring Program | | | | |
| Program Reporting, Evaluation, and Revision | | | | |
| Other | | | | |
| Total | | | | |

This detailed fiscal analysis will be provided each year as part of the Individual Annual Report.

The City of Temecula relies on the following source (or sources) of funds to cover the capital expenditures and the O&M costs associated with implementation of this SWMP and to meet the requirements of the Third-term MS4 Permit.

| Source of Funds | Percent of Total Program Funding | | Restrictions on Use (if applicable) |
|-----------------------------|----------------------------------|-----------------|-------------------------------------|
| | Capital Expenditures | O&M Costs | |
| County Service Area 152 | 0% (existing) | 0% (existing) | |
| General Fund/Other Revenues | 100% (existing) | 100% (existing) | |
| Fees | 50% (proposed) | 50% (proposed) | |

3.4 LEGAL AUTHORITY

A certification of the City of Temecula's adequate legal authority to comply with 40 CFR 122.26(d)(2)(I)(A-F) and the Third-term MS4 Permit will be provided in Appendix A. *The City of Temecula is finalizing a revised NPDES ordinance to specifically address all of the new requirements outlined in the new permit. A certification of legal authority associated with the new ordinance will be available under separate cover upon adoption of the new ordinance in July 2005. The proposed certification will be similar to the current certification, which was provided in the 2003-2004 Annual Report.*

The Urban Runoff management and discharge controls addressed by the City of Temecula's ordinances may be summarized as follows:

- ◆ The disposal of pollutants onto public or private land is prohibited.
- ◆ Construction activities are required to comply with the local storm water ordinance, the applicable erosion and sediment control (grading) ordinance, and minimum BMPs.
- ◆ Priority Development Projects¹ are required to implement BMPs to reduce pollutants to the Maximum Extent Practicable (MEP) and to maintain or reduce downstream erosion and protect stream habitat.
- ◆ Illicit connections to the MS4 are prohibited.
- ◆ Illegal Discharges to the MS4 are prohibited. Illegal discharges are discharges to the MS4 other than those permitted by the Regional Board and those non-stormwater discharges as identified in Section B.2 of the Third-term MS4 Permit and Section 4.1 of this SWMP.
- ◆ Stop work orders, non-monetary penalties, fines, financial security (bonds), and the denial or revocation of permits may be imposed for violation of permit conditions or ordinances.

Table 3-2 lists the ordinances that provide this legal authority. These ordinances can be viewed at <http://ordlink.com/codes/temecula/index.htm>

¹ As defined in Section F.2.b of the Third-term Santa Margarita Region MS4 Permit.

Table 3-2. Ordinances Providing Legal Authority

| Ordinance No. | Ordinance Short Title | Provision(s) of Ordinance Addressing Enforcement |
|----------------------|-------------------------------------------------------------------------------------------|---------------------------------------------------------|
| 8.12.020 | Nuisances – Public Nuisances Defined. | 1.20 General Penalty – Violation of Municipal Code |
| 8.20.410 | Waste Management – Use. | 1.20 General Penalty – Violation of Municipal Code |
| 8.20.610 | Waste Management – Authorized Dump Sites. | 1.20 General Penalty – Violation of Municipal Code |
| 8.20.690 | Waste Management – Unlawful Dumping. | 1.20 General Penalty – Violation of Municipal Code |
| 8.20.710 | Waste Management – Responsibility. | 1.20 General Penalty – Violation of Municipal Code |
| 8.28.210 | Stormwater/Urban Runoff Management and Discharge – Reduction of Pollutants in Stormwater. | 1.20 General Penalty – Violation of Municipal Code |
| 10.16.040 | Vehicles and Traffic – Use of Streets for Storage of Vehicles Prohibited. | 1.20 General Penalty – Violation of Municipal Code |
| 10.16.050 | Vehicles and Traffic – Parking for Certain Purposes Prohibited. | 1.20 General Penalty – Violation of Municipal Code |
| 12.04.080 | Streets, Sidewalks, and Public Places - Duty to Care for Animals. | 1.20 General Penalty – Violation of Municipal Code |
| 12.04.160 | Streets, Sidewalks, and Public Places - Water. | 1.20 General Penalty – Violation of Municipal Code |
| 12.04.180 | Streets, Sidewalks, and Public Places - Waste Liquids and Refuse. | 1.20 General Penalty – Violation of Municipal Code |
| 17.32.060 | Water Efficient Landscape Design - Landscape Design Requirements. | 1.20 General Penalty – Violation of Municipal Code |
| 18.15 | Grading, Erosion and Sediment Control – Erosion and Sediment Control. | 1.20 General Penalty – Violation of Municipal Code |

3.5 ENFORCEMENT

The City of Temecula mandates compliance with its urban runoff related ordinances through implementation of the Enforcement/Compliance Strategy described in Section 3.4.2 of the Riverside County DAMP. City of Temecula staff with responsibility for enforcement receive training as described in Section 3.4.3 of the Riverside County DAMP. Training logs are maintained for purposes of annual reporting to the Regional Board.

As described in the Riverside County DAMP, the City of Temecula has the authority to issue administrative orders and injunctions. Appeal of enforcement actions taken under urban runoff related ordinances are made to the City Council. The court system is used only in those circumstances where criminal prosecution is deemed necessary by the Environmental Crimes Strike Force or the City Attorney/County Counsel.

4.0 ELIMINATION OF ILLICIT CONNECTIONS AND ILLEGAL DISCHARGES

The Riverside County DAMP describes the discharge limitations and prohibitions applicable to the City of Temecula's MS4 (Section 4.1), procedures to be implemented when persistent exceedances of water quality standards are identified (Section 4.2), responding to and reporting illegal discharges (Section 4.4), enforcement measures for illegal discharges and illicit connections (Section 4.5), measures to control litter (Section 4.6), measures to manage sanitary wastes (Section 4.7), and programs to promote collection and proper disposal of hazardous waste (Section 4.8).

The City is finalizing a GIS-based MS4 map to assist locating and eliminating active illicit discharges and illegal connections to the MS4. The map presents all of the city-maintained catch basins, city-maintained storm drains, facilities maintained by Riverside County Flood Control and Caltrans, and existing natural creeks, channels, and canyons. An extensive electronic data base has been developed to accompany the map and includes information specific to each improved storm drain segment and catch basin, including installation date, size, length, material, etc.

IC/ID inspections and reporting are currently a component already included in each of our existing inspection programs throughout construction, commercial, and industrial sites. However, the City also implements a program to actively seek illicit discharges. This program consists of visiting pre-selected observation points throughout Temecula that represent areas down-gradient from commercial, industrial, residential, recreational, and open space areas that have the potential for significant discharges or threats to adjacent receiving waters. These observation points are inspected as per the MS4 permit requirements for visible signs of illegal discharges such as paints, automotive fluids, trash, and other pollutants associated with urban activity. As a result of their locations, NPDES staff may be able to track the visible discharges to the sources. Most of the existing non-stormwater discharges observed to date have been traced to landscape irrigation. Minor miscellaneous non-stormwater discharges consisting of wash water have also been traced to a limited number of drive-thru approaches and patios associated with restaurants and commercial retail stores. The observation points will be reassessed throughout the monitoring period to determine whether they continue to represent paths of potential illicit discharges. An inspection log will also be completed to document the visits and outline any concerns observed. City Code Enforcement officers also routinely canvass the entire city to assist with the NPDES compliance efforts and enforce all of the NPDES-related ordinances.

IC/ID observations are also included during the industrial/commercial facilities inspections and are addressed according to each particular situation encountered. If a responsible party can be identified, outreach and enforcement processes immediately begin. A verbal warning is initially provided to cease all IC/ID operations within a 24-hour time-frame for mitigation. Following the initial contact and verbal warning, a follow-up visit is conducted to determine if compliance goals have been met or are in progress. A formal written warning is issued in the event the responsible party has not met the time-frame to mitigate the IC/ID. An administrative citation may supercede the formal written warning if: 1) discharges have not been discontinued, or 2) compliance efforts are not in progress.

Public Works inspectors also supplement the NPDES IC/ID program by conducting similar inspections at construction sites. These inspectors also assure that illegal connections do not occur during the installation phase of all storm drain lines. Illegal connections are prohibited by the city and are initially verified during the plan check phase. Grading and building permits are not issued until all floor drains, catch basins, and storm drain pipes are approved by Public Works. In addition, Certificates of Occupancy are not issued at the end of the project unless the developers provide the City with videotaped documentation of the new storm drains and connections into existing storm drains. City inspectors are responsible for verifying conformance with the approved plans and permits, and conduct daily inspections throughout all construction sites. Detection of any IC/IDs will cause the inspectors to issue an immediate Stop Work Order and require all construction activities associated with the IC/ID to cease until the IC/ID is addressed.

IC/ID reporting is also conducted through seasonal water sampling and monitoring activities. The Riverside County Flood Control District, serving as the Principal Permittee for the SMR MS4 Permit program, collects wet-season and dry-season water samples throughout Temecula. These samples provide another means by which IC/IDs may be identified. If evidence of an IC/ID is encountered, the District will contact City personnel who, in turn, will notify the responsible party and require immediate mitigation measures.

In addition, the CAP also assists the City's IC/ID elimination efforts through the Stormwater Compliance Surveys completed by EHD and HMM. These surveys list non-compliance issues that require additional attention, including IC/IDs, and are forwarded to the City's NPDES staff for follow-up visits. If IC/IDs are encountered, the City will conduct follow-up site visits to address the non-compliance issues and IC/ID's observed by DEH and HazMat.

The County of Riverside Fire Department and Environmental Health Department are under contract with the City to respond to emergency spills and large discharges involving hazardous materials, hazardous waste, sewage spills, etc. The City is also beginning to coordinate meetings with the local sewer agency to discuss sewer spills, prevention, reporting, and response. Current NPDES brochures direct the public to call the Riverside County Stormwater/Cleanwater Protection Program at 1-800-506-2555 to report activity involving illegal discharges into storm drains. This service provides an initial automated answering message that directs callers to report emergency discharges to the Fire Department by calling 911, and to report sewage spills to EHD at 1-951-955-8982. Although the city maintenance crews have been trained to address non-emergency and smaller discharges, they can also assist other agencies with clean-up efforts. First responders from the City include code enforcement officers and city maintenance crews. Staff from these departments are on-call 24-hours a day, 7-days a week. Non-emergency spills are typically addressed by calling City Hall during business hours at 1-951-694-6411, or by calling the Temecula Police Department at 1-951- 696-3000 during business hours, and 1-800-950-2444 after business hours. In addition, five fire stations are located in Temecula. These stations respond to hazardous materials emergency calls in Temecula year-round.

Additionally, the City of Temecula implements an Illicit Discharge Monitoring Program as described in Section 11 of this SWMP.

An evaluation of the effectiveness of the Illicit Discharge Detection and Elimination component of the SWMP will be included in the Annual Report. The measurable goals addressed in this evaluation will include:

- ◆ Number of illicit discharges, connections and spills reported and/or identified during the reporting period.
- ◆ Number of illicit discharges or connections investigated during the reporting period and the outcome of the investigations.
- ◆ Number and type of enforcement actions taken for illicit discharges or connections during the reporting period.
- ◆ Number of times the City's hotline was called during the reporting period, as compared to previous reporting period.
- ◆ Number and location of dry weather monitoring sites that were monitored during the reporting period.

These measurable goals will be considered in an overall assessment of the effectiveness of the Illicit Discharge Detection and Elimination component. The evaluation will include an assessment of the effectiveness of BMPs that have been implemented for municipal facilities and activities. In addition, major accomplishments of the Illicit Discharge Detection and Elimination component and changes to be implemented in the subsequent year to improve the effectiveness of the program will be included in the evaluation. A reporting form for summarizing this evaluation is included in the Riverside County DAMP.

5.0 MUNICIPAL FACILITIES AND ACTIVITIES

5.1 PLANNING PUBLIC AGENCY FACILITIES

City of Temecula will be incorporating the development of a project-specific WQMP into the process of planning, designing, and preparing construction plans and specifications for its public agency Priority Development Projects as of July 1, 2005. The policies and procedures implemented by City of Temecula to ensure that the planning and design of its public agency Priority Development Projects reflect WQMP requirements is the requirement of post-development BMP installation and maintenance through Condition of Approval.

5.2 PUBLIC AGENCY CONSTRUCTION ACTIVITIES

Section 5.2 of the Riverside County DAMP describes how the City of Temecula ensures that its construction projects are in compliance with the latest version of the General Permit for Stormwater Discharges Associated with Construction Activity and the requirements of the Third-term MS4 Permit.

5.3 OPERATION AND MAINTENANCE OF PUBLIC AGENCY FACILITIES

Section 5.3 of the Riverside County DAMP describes the program for operation, maintenance, and inspection of City of Temecula facilities. City of Temecula has modified the “Template Facility Pollution Prevention Plan (PPP)” contained in the Riverside County DAMP to incorporate minimum BMPs for categories of municipal operations (parks, vehicle maintenance, transportation yards, etc). The minimum BMPs will be required, as applicable, at each facility for which the minimum BMPs are applicable.

In general, copies of the PPP will be maintained at each facility. However, the City of Temecula operates many facilities (e.g., parks, trails) that do not maintain onsite staff, maintenance equipment or materials. In these cases, a copy of the PPP for the applicable category of municipal operation will be maintained at the centralized maintenance facility (e.g., corporate yard) corresponding to the operations category or where the maintenance contracts are administered (i.e. City Hall).

An inventory of the City of Temecula municipal facilities is provided in Appendix B. The municipal activities conducted by the City of Temecula include:

- ◆ street sweeping,
- ◆ catch basin cleaning,
- ◆ maintenance of MS4 facilities,
- ◆ landscape maintenance,
- ◆ swimming pool maintenance,
- ◆ operation of corporation yards (vehicle and equipment maintenance, storage, etc.)

Schedules for these maintenance activities are provided in Appendix C.

5.4 FIRE BMPs

Section 5.3 of the Riverside County DAMP describes the measures implemented by the City of Temecula to reduce pollutants entering the MS4 from non-emergency fire fighting flows such as fire training activities and fire hydrant/sprinkler testing or flushing.

5.5 TRAINING FOR MUNICIPAL MAINTENANCE EMPLOYEES

Training of City of Temecula's staff responsible for implementing the municipal maintenance programs is described in Section 5.5 of the Riverside County DAMP.

5.6 ASSESSMENT OF EFFECTIVENESS

An evaluation of the effectiveness of the Municipal component of the SWMP will be included in the Annual Report. The measurable goals addressed in this evaluation will include:

- ◆ Number of inspections conducted at existing facilities.
- ◆ Number and type of enforcement actions related to construction sites.
- ◆ Number of catch basins and inlets that were inspected and the number that were cleaned.
- ◆ Amount and type of debris removed from catch basins, streets and open channels, including an identification of problem areas that generate the most pollutants.
- ◆ Description and number of training efforts conducted during the reporting period for municipal facility operators and/or inspectors, including number trained.

These measurable goals will be considered in an overall assessment of the effectiveness of the Municipal component. The evaluation will include an assessment of the effectiveness of BMPs that have been implemented for municipal facilities and activities. In addition, major accomplishments of the Municipal component and changes to be implemented in the subsequent year to improve the effectiveness of the program will be included in the evaluation. A reporting form for summarizing this evaluation is included in the Riverside County DAMP.

6.0 DEVELOPMENT PLANNING

6.1 INTRODUCTION

Section 6.0 of the Riverside County DAMP describes the development project approval process implemented by the City of Temecula to ensure that urban runoff from new development and redevelopment is reduced to the Maximum Extent Practicable (MEP), that post-development runoff volumes and velocities will be controlled, and that water quality objectives will not be violated by new development and redevelopment projects.

6.2 GENERAL PLAN

6.2.1 General Plan Review and Amendment

Watershed protection principles and objectives for managing Urban Runoff for land development are reflected in the appropriate policies, goals, and objectives of the City of Temecula General Plan. The City of Temecula reviewed its General Plans to ensure that the following principles and policies are properly considered:

- a) Minimize the amount of impervious surfaces and directly connected impervious surfaces areas of development and, where feasible, slow runoff and maximize on-site infiltration of runoff.
- b) Implement pollution prevention methods supplemented by source control and treatment control BMPs. Use small collection strategies located at, or as close as possible to, the source (i.e., the point where water initially meets the ground) to minimize the transport of urban runoff and pollutants offsite and into an MS4.
- c) Preserve, and where possible, create or restore areas that provide important water quality benefits, such as riparian corridors, wetlands, and buffer zones. Encourage land acquisition of such areas.
- d) Limited disturbance of natural water bodies and natural drainage systems caused by development including roads, highways, and bridges.
- e) Prior to making land use decisions, utilize methods available to estimate increases in pollutant loads and flows resulting from projected future development. Require incorporation of appropriate BMPs to mitigate the projected increases in pollutant loads and flows.
- f) Avoid development of areas that are particularly susceptible to erosion and sediment loss; or establish development guidance that identifies these areas and protects them from erosion and sediment loss.
- g) Reduce pollutants associated with vehicles and increasing traffic resulting from development.
- h) Post-development runoff from a site shall not contain pollutant loads that cause or contribute to an exceedance of receiving water quality objectives and which have not been reduced to the MEP.

When the City of Temecula amends elements of its General Plan, the draft General Plan amendments are provided to the Regional Board for comment.

6.3 CEQA ENVIRONMENTAL REVIEW PROCESS

The City of Temecula has reviewed its CEQA processes to ensure that Urban Runoff issues are properly considered and addressed. Where necessary, the processes were revised to consider and mitigate impacts to Urban Runoff quality and Receiving Waters. The City of Temecula specifically considers the following questions/issues during the CEQA process:

- a) Could the proposed project result in increased impervious surfaces and associated increased runoff? Consider water quality parameters such as temperature, dissolved oxygen, turbidity and other typical stormwater pollutants (e.g. heavy metals, pathogens, petroleum derivatives, synthetic organics, sediment, nutrients, oxygen demanding substances, and trash).
- b) Could the proposed project result in significant alteration of receiving water quality during or following construction?
- c) Could the proposed project result in increased impervious surfaces and associated increased runoff?
- d) Could the proposed project create significant adverse environmental impact to drainage patterns due to changes in runoff flow rates or volumes?
- e) Could the proposed project result in increased erosion downstream?
- f) Is the project tributary to an already impaired water body, as listed on the CWA section 303(d) list? If so, can it result in an increase in any pollutant for which the water body is already impaired?
- g) Is the project tributary to other environmentally sensitive areas? If so, can it exacerbate already existing sensitive conditions?
- h) Could the proposed project have a potentially significant environmental impact on surface water quality of marine, fresh, or wetland waters?
- i) Could the proposed project have a potentially significant adverse impact on groundwater quality?
- j) Could the proposed project cause or contribute to an exceedance of applicable surface or groundwater receiving water quality objectives or degradation of beneficial uses?
- k) Can the project impact aquatic, wetland, or riparian habitat?

These Urban Runoff pollution issues are considered in the Initial Study process (project application form and checklist) and in the preparation and reviews of environmental documents as discussed in the subsections that follow. These questions/guidance are provided to:

- ◆ Environmental planning staff for use in preparing and reviewing CEQA documents for internal city/county projects and when reviewing CEQA documents prepared by the private sector
- ◆ Consultants and other members of the private sector for use in preparing CEQA documents
- ◆ Project applicants during the CEQA preliminary review process
- ◆ Participants attending training related to the requirements of the Third-term MS4 Permit, the DAMP, or the WQMP.

Project Application Form

The City of Temecula utilizes the project application form that will be contained in Appendix D in the environmental review process. *Currently, all planning applications for new development projects and*

modifications to existing developments (significant redevelopment) are in the process of being revised to include the submittal of a WQMP. The revised applications will be available as of July 1, 2005.

Initial Study Checklist

The City of Temecula utilizes the Initial Study Checklist that contains a customized section on hydrology and water quality. A copy of the hydrology and water quality portion of the Initial Study Checklist is contained in Appendix E.

6.4 DEVELOPMENT PROJECT REVIEW, APPROVAL, AND PERMITTING

For all Priority Development Projects that do not have Conditions of Approval or Tentative Tract, Subdivision, or Parcel map approval by July 13, 2005, the project applicant is required to prepare a project-specific WQMP that is in conformance with the Riverside County Water Quality Management Plan for Urban Runoff, which is Appendix O of the Riverside County DAMP. The primary objective of the WQMP, through application of Site Design, Source Control, and Treatment Control BMPs on a project-specific basis, is to ensure that the land use approval and permitting process will minimize the impact of Urban Runoff. The ordinance that provides the City of Temecula the authority to implement and enforce the WQMP is discussed in Section 3.4 of this SWMP. The policies and procedures for project review, approval, permitting, and permit close-out are described in Section 6.4 of the Riverside County DAMP.

6.5 TRAINING

The educational program for developers and contractors and training of municipal staff is described in Section 6.5 of the Riverside County DAMP.

6.6 ASSESSMENT OF EFFECTIVENESS

An evaluation of the effectiveness of the Development Planning component of the SWMP will be included in the Annual Report. The measurable goals addressed in this evaluation will include:

- ◆ Number of developments conditioned to meet WQMP requirements;
- ◆ Amount of training conducted during the reporting period, including number of staff trained;

These measurable goals will be considered in an overall assessment of the effectiveness of the Development Planning component. In addition, major accomplishments of the Development Planning component changes to be implemented in the subsequent year to improve the effectiveness of the program will be included in the evaluation. A reporting form for summarizing this evaluation is included in the Riverside County DAMP.

7.0 PRIVATE DEVELOPMENT CONSTRUCTION ACTIVITY

The Riverside County DAMP describes pollution prevention measures and construction site BMPs (Section 7.1), development of a construction site inventory/database (Section 7.2), procedures for construction site inspections (Section 7.3) and enforcement (Section 7.4), notification of the Regional Board (Section 7.5), annual reporting requirements (Section 7.6), training of municipal staff (Section 7.7) and education/outreach regarding construction activities (Section 7.7).

7.1 CONSTRUCTION SITE INVENTORY

An inventory of construction sites within/under the jurisdiction of the City of Temecula is provided in Appendix F. This inventory of construction sites is updated annually prior to the rainy season.

7.2 CONSTRUCTION SITE INSPECTION

When conducting inspections of construction sites the City of Temecula staff utilize the inspection form provided in Appendix G.

7.3 ASSESSMENT OF EFFECTIVENESS

An evaluation of the effectiveness of the Construction component of the SWMP will be included in the Annual Report. The measurable goals addressed in this evaluation will include:

- ◆ Number and type of enforcement actions related to construction sites.
- ◆ Description and number of training efforts conducted during the reporting period, including number and category of persons (staff inspectors, contractors, construction site operators) trained.

These measurable goals will be considered in an overall assessment of the effectiveness of the Construction component. In addition, major accomplishments of the Construction component and changes to be implemented in the subsequent year to improve the effectiveness of the program will be included in the evaluation. A reporting form for summarizing this evaluation is included in the Riverside County DAMP.

8.0 INDUSTRIAL AND COMMERCIAL SOURCES

The Riverside County DAMP describes development of an industrial and commercial facility inventory/database (Section 8.1), prioritization of facilities and inspection frequency (Section 8.3), procedures for facility inspections (Section 8.4), enforcement (Section 8.5), notification of the Regional Board (Section 8.6), reporting requirements (Section 8.7), and training of municipal staff (Section 8.8).

8.1 INDUSTRIAL/COMMERCIAL FACILITY DATABASE

The City of Temecula developed and maintains an inventory/database of industrial and commercial facilities within their jurisdiction. This inventory/database is provided in Appendix H. Maintenance of the facility inventory/database includes regularly updating the inventory/database for information obtained during facility inspections or other sources.

8.2 SMR MINIMUM BMPs FOR INDUSTRIAL/COMMERCIAL FACILITIES

The City of Temecula has designated a set of minimum BMPs for the industrial and commercial facilities within their jurisdiction to reduce the discharge of pollutants to the MEP. The minimum BMPs, all of which are pollution prevention BMPs, are:

- ◆ Good Housekeeping
- ◆ Proper Materials Handling and Storage
- ◆ Proper Waste Handling
- ◆ Preventive Maintenance
- ◆ Spill Prevention and Response Procedures (where applicable)
- ◆ Facility Personnel Training

Through the process of conducting inspections of industrial and commercial facilities, the inspectors have made the facilities aware of these minimum BMPs and additional BMPs (when appropriate) and of the City of Temecula's stormwater/urban runoff ordinance.

As implementation of this SWMP progresses, the need for additional BMPs to specifically address the pollutants causing or contributing to an impairment of Receiving Waters that are included in the 303(d) List or Environmentally Sensitive Areas (ESAs) will be assessed. This assessment will be conducted as part of the overall program effectiveness evaluation described in Section 12.

Where implementation of the minimum BMPs and the additional BMPs are identified as being insufficient to achieve compliance with the Third-term Santa Margarita MS4 Permit, the City of Temecula requires the implementation of additional site-specific BMPs.

8.3 ASSESSMENT OF EFFECTIVENESS

An evaluation of the effectiveness of the Industrial and Commercial Sources component of the SWMP will be included in the Annual Report. The measurable goals addressed in this evaluation will include:

- ◆ Number of inspections conducted.
- ◆ Number and type of enforcement actions taken.

These measurable goals will be considered in an overall assessment of the effectiveness of the Industrial and Commercial Sources component. In addition, major accomplishments of the Industrial and Commercial Sources component and changes to be implemented in the subsequent year to improve the effectiveness of the program will be included in the evaluation. A reporting form for summarizing this evaluation is included in the Riverside County DAMP.

9.0 RESIDENTIAL SOURCES

9.1 HIGH PRIORITY RESIDENTIAL ACTIVITIES

The City of Temecula has identified the high priority residential activities that it believes may be contributing a significant pollutant load to its MS4. The residential activities that have been identified as high priority in the City of Temecula are:

- ◆ Automobile repair and maintenance
- ◆ Automobile washing
- ◆ Home and garden care activities and product use (pesticides, herbicides, and fertilizers)

9.2 MINIMUM BMPs FOR RESIDENTIAL ACTIVITIES

The City of Temecula has designated a set of minimum BMPs for residential activities within their jurisdiction to reduce the discharge of pollutants to the MEP. The minimum BMPs, all of which are pollution prevention BMPs, are:

- ◆ Proper maintenance of irrigation systems
- ◆ Proper pool maintenance
- ◆ Pick-up and proper disposal of pet waste
- ◆ Proper use and disposal of home and garden products
- ◆ Proper disposal of green waste
- ◆ Proper disposal of household hazardous waste
- ◆ Proper automobile and home maintenance

Through public education and outreach the City of Temecula has notified the residents of the minimum BMPs and additional BMPs (when appropriate) and of its stormwater/urban runoff ordinance.

As implementation of this SWMP progresses, the need for additional BMPs to specifically address the pollutants causing or contributing to an impairment of Receiving Waters that are included in the 303(d) List or Environmentally Sensitive Areas (ESAs) will be assessed. This assessment will be conducted as part of the overall program effectiveness evaluation described in Section 12.

9.3 ENFORCEMENT

Enforcement of the City of Temecula's storm water ordinance (including the prohibition of non-exempt non-stormwater discharges) is described in Section 3.4 of the Riverside County DAMP.

9.4 ASSESSMENT OF EFFECTIVENESS

An evaluation of the effectiveness of the Residential Sources component of the SWMP will be included in the Annual Report. The measurable goals addressed in this evaluation will include:

- ◆ Number and type of enforcement actions taken; and
- ◆ Number and type of internal and external education and outreach activities.

These measurable goals will be considered in an overall assessment of the effectiveness of the Residential Sources component. In addition, major accomplishments of the Residential Sources component and changes to be implemented in the subsequent year to improve the effectiveness of the program will be included in the evaluation. A reporting form for summarizing this evaluation is included in the Riverside County DAMP.

10.0 PUBLIC EDUCATION AND OUTREACH

The City of Temecula implements the public education and outreach program described in the Riverside County DAMP, which addresses the requirements of the Third-term MS4 Permit (Section 10.2), the objectives of the public education and outreach program (Section 10.3), implementation of the program (Section 10.4), and the specific components of the program, including public participation (Section 10.5).

The City of Temecula also conducts the following public education and outreach activities:

- ◆ Stormwater management program information and links are provided on the City's website located at http://www.cityoftemecula.org/cityhall/pub_works/landDev/npdes.htm
- ◆ Inspectors distribute educational brochures generated by RCFCD during construction site inspections and industrial/commercial facility inspections.
- ◆ Education materials are available at the Public Works reception counter.
- ◆ NPDES brochures are available at local weekend events.

An evaluation of the effectiveness of the Public Education and Outreach component of the SWMP will be included in the Annual Report. The measurable goals addressed in this evaluation will include the number of:

- ◆ Permittee employees trained
- ◆ Construction outreach events conducted
- ◆ Industrial/Commercial outreach events conducted
- ◆ Media impressions
- ◆ Classroom presentations
- ◆ Public education events conducted

These measurable goals will be considered in an overall assessment of the effectiveness of the Public Education and Outreach component. In addition, major accomplishments of the Public Education and Outreach component and changes to be implemented in the subsequent year to improve the effectiveness of the program will be included in the evaluation. A reporting form for summarizing this evaluation is included in the Riverside County DAMP.

11.0 MONITORING PROGRAM

The Consolidated Program for Water Quality Monitoring is described in Section 11 of the Riverside County DAMP.

Additionally, the City of Temecula developed and implements an Illicit Discharge Monitoring Program, for its own MS4. The following stations have been identified as illicit discharge (dry weather) monitoring stations:

- ◆ Empire Creek at Del Rio bridge
- ◆ Pechanga Creek at the confluence of Pechanga and Temecula Creeks
- ◆ Stormdrain channel west of Canterfield
- ◆ Temecula Creek ant the end of Pechanga Drive

These stations are monitored (inspected) at least twice a year between May 1st and September 30th. For each of these stations, the City of Temecula records the following information:

- ◆ Time (days) since last rain event
- ◆ Total rainfall (inches) for last rain event
- ◆ Physical description of station/conveyance (e.g., 24-inch RCP)
- ◆ Predominant land uses of station's drainage area
- ◆ Estimation of flow, if any:
- ◆ Observations (odor, color, deposits, staining, etching, stressed vegetation, etc.)

The City of Temecula will utilize the field reporting form developed as part of the Consolidated Program for Water Quality Monitoring (Section 12 of the Riverside County DAMP).

If flow or accumulated water is observed and more than 72 hours have past since the last rain event, field screening analysis is conducted for specific conductance, turbidity, pH, temperature, and dissolved oxygen. Additionally, if the field screening analysis indicates the potential for an illicit connection or illegal discharge and there is adequate flow or accumulated water, samples will be collected² and submitted to a water quality analytical laboratory. The samples will be analyzed for the following constituents: total hardness, oil & grease, ammonia nitrogen, nitrate nitrogen, total phosphorus, total and dissolved copper, surfactants (MBAs), diazinon, chlorpyrifos, dissolved lead, E. coli, total coliform, and fecal coliform.

Analytical results (either laboratory or field screening) that exceed the numeric criteria developed as part of the Consolidated Program for Water Quality Monitoring (Section 12 of the Riverside County DAMP)

² Samples will only be collected if there is adequate flow or accumulated water to allow for proper field quality assurance and quality control for sample collection. For example, due to sample preservation requirements, a separate sample must be collected for analysis of Oil & Grease and the sample must be collected without compromising the amount of preservative in the sample bottle.

will trigger further investigation and inspection with the objective of eliminating the illicit connection or illegal discharge.

The City of Temecula summarizes the results of its Illicit Discharge Monitoring Program for each annual report submitted to the Regional Board.

12.0 PROGRAM REPORTING, EVALUATION, AND REVISION

The City of Temecula implements the reporting (Section 12.1), program evaluation (Section 12.2), and program revision elements described in the Riverside County DAMP.

APPENDIX A

Certification of Legal Authority (*Pending*)

APPENDIX B
Inventory of Municipal Facilities

CITY OF TEMECULA INVENTORY OF MUNICIPAL FACILITIES AND ACTIVITIES

| NAME | ADDRESS | DESCRIPTION |
|--------------------------------|---------------------------|------------------------------------------------------------------------------------------------------------------------|
| CORPORATE YARD | | |
| Public Works Maintenance Yard | 43200 Business Park Dr | Vehicle parking, limited storage of miscellaneous maintenance supplies, storage of BMPs for Municipal Facilities, etc. |
| EXISTING PARKS | | |
| Bahia Vista Park | 41566 Avenida de la Reina | Barbeque, open grass areas, picnic tables or park benches, tot lot or playground equipment, water fountains. |
| Butterfield Stage Park | 33654 De Portola | Barbeque, open grass areas, picnic tables or park benches, tot lot or playground equipment, water fountains. |
| Calle Aragon Park | 41621 Calle Aragon | Barbeque, open grass areas, picnic tables or park benches, tot lot or playground equipment, water fountains. |
| Crowne Hill Park | 33203 Old Kent Rd | Barbeque, open grass areas, picnic tables or park benches, tot lot or playground equipment, water fountains. |
| Harveston Community Park | 28582 Harveston Dr | Barbeque, open grass areas, picnic tables or park benches, tot lot or playground equipment, water fountains, parking. |
| John Magee Park | 44656 Corte Veranos | Barbeque, open grass areas, picnic tables or park benches, tot lot or playground equipment, water fountains. |
| Kent Hintergardt Memorial Park | 31465 Via Cordoba | Barbeque, open grass areas, picnic tables or park benches, tot lot or playground equipment, water fountains. |
| Loma Linda Park | 30877 Loma Linda Rd | Barbeque, open grass areas, picnic tables or park benches, tot lot or playground equipment, water fountains. |
| Long Canyon Creek Park | 40356 N. General Kearny | Barbeque, open grass areas, picnic tables or park benches, tot lot or playground equipment, water fountains. |
| Margarita Community Park | 29119 Margarita Rd | Barbeque, open grass areas, picnic tables or park benches, tot lot or playground equipment, water fountains. |
| Meadows Park | 43110 Meadows Pky | Barbeque, open grass areas, picnic tables or park benches, tot lot or playground equipment, water fountains. |
| Nakayama Park | 30592 Nicolas Rd | Barbeque, open grass areas, picnic tables or park benches, tot lot or playground equipment, water fountains. |
| Nicolas Road Park | 39955 Nicolas Rd | Barbeque, open grass areas, picnic tables or park benches, tot lot or playground equipment, water fountains. |
| Pablo Apis Park | 33005 Regina | Barbeque, open grass areas, picnic tables or park benches, tot lot or playground equipment, water fountains. |

CITY OF TEMECULA INVENTORY OF MUNICIPAL FACILITIES AND ACTIVITIES

| NAME | ADDRESS | DESCRIPTION |
|---------------------------------|-----------------------|-----------------------------------------------------------------------------------------------------------------------|
| Pala Community Park | 44900 Temecula Ln | Barbeque, open grass areas, picnic tables or park benches, tot lot or playground equipment, water fountains. |
| Paloma del Sol Park | 32099 De Portola | Barbeque, open grass areas, picnic tables or park benches, tot lot or playground equipment, water fountains. |
| Pauba Ridge Park | 33405 Pauba Rd | Barbeque, open grass areas, picnic tables or park benches, tot lot or playground equipment, water fountains. |
| Redhawk Community Park | 44747 Redhawk Parkway | Barbeque, open grass areas, picnic tables or park benches, tot lot or playground equipment, water fountains. |
| Riverton Park | 30950 Riverton Ln | Barbeque, open grass areas, picnic tables or park benches, tot lot or playground equipment, water fountains. |
| Ronald Reagan Sports Park | 42659 Margarita Rd | Barbeque, open grass areas, picnic tables or park benches, tot lot or playground equipment, water fountains, parking. |
| Rotary Park | 28816 Pujol St | Barbeque, open grass areas, picnic tables or park benches, tot lot or playground equipment, water fountains. |
| Sam Hicks Monument Park | 41970 Moreno Rd | Barbeque, open grass areas, picnic tables or park benches, tot lot or playground equipment, water fountains, parking. |
| Serena Hills Park | 40747 Walcott Ln | Barbeque, open grass areas, picnic tables or park benches, tot lot or playground equipment, water fountains. |
| Stephen Linen Jr. Memorial Park | 44935 Nighthawk Pass | Barbeque, open grass areas, picnic tables or park benches, tot lot or playground equipment, water fountains. |
| Temecula Duck Pond | 28250 Ynez Rd | Barbeque, open grass areas, picnic tables or park benches, tot lot or playground equipment, water fountains, parking. |
| Temecula Middle School | 42075 Meadows Parkway | Fields only |
| Temeku Hills Park | 31367 La Serena Wy | Barbeque, open grass areas, picnic tables or park benches, tot lot or playground equipment, water fountains. |
| Vail Ranch Park | 32965 Harmony Ln | Barbeque, open grass areas, picnic tables or park benches, tot lot or playground equipment, water fountains. |
| Veterans Park | 30965 La Serena Wy | Barbeque, open grass areas, picnic tables or park benches, tot lot or playground equipment, water fountains. |
| Voorburg Park | 39960 Nicolas Rd | Barbeque, open grass areas, picnic tables or park benches, tot lot or playground equipment, water fountains. |
| Winchester Creek Park | 39950 Margarita Rd | Barbeque, open grass areas, picnic tables or park benches, tot lot or playground equipment, water fountains. |

CITY OF TEMECULA INVENTORY OF MUNICIPAL FACILITIES AND ACTIVITIES

| NAME | ADDRESS | DESCRIPTION |
|--------------------------------|----------------------------------------------------------|--------------------------------------------------------------------------------------------------------------|
| | | Barbeque, open grass areas, picnic tables or park benches, tot lot or playground equipment, water fountains. |
| RECREATIONAL FACILITIES | | |
| Chaparral High School | 27215 Nicolas Road | Pool |
| Community Recreation Center | 30875 Rancho Vista Rd | Classes, lockers, gymnasium, pool, billiard, meeting rooms, stage, kitchen, amphitheater, parking. |
| Temecula Skate Park | 42659 Margarita Rd | Arena, picnic facilities, restroom, snack bar, equipment rental, parking. |
| Temecula Elementary School | 41951 Moraga Road | Pool |
| | | |
| FIRE STATIONS | | |
| Fire Station #84 | 30650 Pauba Road | Office and parking |
| Fire Station #92 | 32364 Overland Trail | Office and parking |
| | | |
| POLICE STATION | | |
| Temecula Police Station | 28410 Old Town (storefront) | Office and parking |
| | 30755 Auld Road, Murrieta (main station for Temecula) | Offices and parking |
| | | |
| | | |
| OTHER PUBLIC FACILITIES | | |
| Chapel of Memories | 28300 Mercedes St | Wedding Chapel (Sam Hicks Monument Park) |
| City Hall | 43200 Business Park Dr | Offices, parking lot |
| Imagination Workshop | 42081 Main St | Children's Museum |
| Mary Phillips Senior Center | 41845 6th St | Classrooms, auditorium, stage, billiards, kitchen, parking lot |
| Old Town Community Theatre | 42051 Main Street | |
| Temecula Community Center | 28816 Pujol Street | Multi-purpose room, kitchen, class rooms, parking lot |
| Temecula Valley Museum | 28314 Mercedes St | Public Museum (Sam Hicks Monument Park) |

APPENDIX C

Schedules for Municipal Maintenance Activities

COPY

MEMORANDUM



TO: Bill Hughes, Director of Public Works/City Engineer

FROM: *Bob* Brad Buron, Maintenance Superintendent

DATE: May 3, 2005

SUBJECT: Monthly Activity Report - April, 2005

The following activities were performed by Public Works Department, Street Maintenance Division in-house personnel for the month of **April, 2005:**

| | | |
|--------------------------------|---------------------------------------------------------------------|--------------|
| I. SIGNS | | |
| A. | Total signs replaced | <u>158</u> |
| B. | Total signs installed | <u>10</u> |
| C. | Total signs repaired | <u>27</u> |
| II. TREES | | |
| A. | Total trees trimmed for sight distance and street sweeping concerns | <u>5</u> |
| III. ASPHALT REPAIRS | | |
| A. | Total square feet of A. C. repairs | <u>7,047</u> |
| B. | Total Tons | <u>52</u> |
| IV. CATCH BASINS | | |
| A. | Total catch basins cleaned | <u>178</u> |
| V. RIGHT-OF-WAY WEED ABATEMENT | | |
| A. | Total square footage for right-of-way abatement | <u>0</u> |
| VI. GRAFFITI REMOVAL | | |
| A. | Total locations | <u>17</u> |
| B. | Total S.F. | <u>2,505</u> |
| VII. STENCILING | | |
| A. | <u>7</u> New and repainted legends | |
| B. | <u>11,792</u> L.F. of new and repainted red curb and striping | |

CITY CREW MAINTENANCE SCHEDULE

| | |
|------------------------------------------------------------------------------------------------------------------------------------------------------------------------------------------------------------------------------------------------------------------------------------------------------------------------------------------------------------------------------------------------------------------------------------------------------|-----------------------------------------------------------------------------------------------------------------------------------------------------------------------------|
| 5-16-05 MONDAY | 5-17-05 TUESDAY |
| <p>① CITY WIDE CATCH BASIN HOT SPOTS - REMOVE DEBRIS FROM MOUTH OF CATCH BASINS.</p> <p>② AREA 1 - INSPECT AND CLEAN CATCH BASINS. SECURE CATCH BASIN LIDS. INSPECT CATCH BASIN LID FOR ONLY RAIN IN THE DRAIN AND REPLACE IF DAMAGED.</p> | <p>① AREA 1 - INSPECT AND CLEAN CATCH BASINS. SECURE CATCH BASIN LIDS. INSPECT CATCH BASIN LID FOR ONLY RAIN IN THE DRAIN AND REPLACE IF DAMAGED.</p> |
| 5-18-05 WEDNESDAY | 5-19-05 THURSDAY |
| <p>① AREA 1 - INSPECT AND CLEAN CATCH BASINS. SECURE CATCH BASIN LIDS. INSPECT CATCH BASIN LID FOR ONLY RAIN IN THE DRAIN AND REPLACE IF DAMAGED.</p> | <p>① AREA 1 - INSPECT AND CLEAN CATCH BASINS. SECURE CATCH BASIN LIDS. INSPECT CATCH BASIN LID FOR ONLY RAIN IN THE DRAIN AND REPLACE IF DAMAGED.</p> |
| <p>Crew Reminders:</p> <ol style="list-style-type: none"> 1. Safety first. 2. Split crew. Do your paperwork. 3. Paperwork needs to have quantities, time, locations. 4. When uncertain of a project, ask questions. 5. Any personnel questions, "open door policy", Brad, Bill, Human Resources. 6. Continue with your "Can Do Attitude". <p>Thank you for the good job. Brad</p> | 5-20-05 FRIDAY <p>① AREA 1 - INSPECT AND CLEAN CATCH BASINS. SECURE CATCH BASIN LIDS. INSPECT CATCH BASIN LID FOR ONLY RAIN IN THE DRAIN AND REPLACE IF DAMAGED.</p> |

APPENDIX D

Project Application Form

(Under Revision – Available July 1, 2005)

APPENDIX E
Initial Study Checklist
Section 8: Hydrology and Water Quality

8. HYDROLOGY AND WATER QUALITY. Would the project:

| | Issues and Supporting Information Sources | Potentially Significant Impact | Potentially Significant Unless Mitigation Incorporated | Less Than Significant Impact | No Impact |
|----|--------------------------------------------------------------------------------------------------------------------------------------------------------------------------------------------------------------------------------------------------------------------------------------------------------------------------------------------------------------------------------------------|--------------------------------|--------------------------------------------------------|------------------------------|-----------|
| a. | Violate any water quality standards or waste discharge requirements or otherwise substantially degrade water quality? | | | | |
| b. | Substantially deplete groundwater supplies or interfere substantially with groundwater recharge such that there would be a net deficit in aquifer volume or a lowering of the local groundwater table level (e.g., the production rate of pre-existing nearby wells would drop to a level which would not support existing land uses or planned uses for which permits have been granted)? | | | | |
| c. | Substantially alter the existing drainage pattern of the site or area, including through the alteration of the course of a stream or river, in a manner which would result in substantial erosion or siltation on- or off-site? | | | | |
| d. | Substantially alter the existing drainage pattern of the site or area, including through the alteration of the course of a stream or river, or substantially increase the rate or amount of surface runoff in a manner which would result in flooding on- or off-site? | | | | |
| e. | Create or contribute runoff water which would exceed the capacity of existing or planned storm water drainage systems or provide substantial additional sources of polluted runoff? | | | | |
| f. | Require the preparation of a Water Quality Management Plan? | | | | |
| g. | Place housing within a 100-year flood hazard area as mapped on a federal Flood Hazard Boundary or Flood Insurance Rate Map or other flood hazard delineation map? | | | | |
| h. | Place within a 100-year flood hazard area structures which would impede or redirect flood flows? | | | | |
| i. | Expose people or structures to a significant risk of loss, injury or death involving flooding, including flooding as a result of the failure of a levee or dam? | | | | |
| j. | Inundation by seiche, tsunami, or mudflow? | | | | |

APPENDIX F
Construction Site Inventory



CITY OF TEMECULA

Land Development Activity Report

Reporting Period 7/1/2004 through 5/1/2005

| Activity | Type of Plan | Status | Address | Description | Plan Checker |
|------------|--------------|---------|---------|-----------------------------------------------------------------|--------------|
| LD04-150CO | LD_CONST | BORE_V | ISSUED | EXCAVATE TWO GEOTECH 8" BORINGS ON MAIN ST BRIDGE | SMC |
| LD04-154CO | LD_CONST | STR | ISSUED | JEFFERSON AVE REHAB PHASE 2 - CIP PROJECT PW02-26 | SC |
| LD04-161CO | LD_CONST | MISC | ISSUED | HAUL ROUTE PERMIT | SC |
| LD04-171CO | LD_CONST | MISC | ISSUED | HAUL ROUTE PERMIT | SC |
| LD04-194CO | LD_CONST | TRFS&S | ISSUED | INSTALL REVISED STRIPING ON MARGARITA RD W/O MORAG | SC |
| LD04-195CO | LD_CONST | MISC | ISSUED | INSTALL TEMPORARY POWER | SC |
| LD04-219CO | LD_CONST | MISC | ISSUED | CITY WIDE CONCRETE SIDEWALK REPAIRS FY2003-04 | SC |
| LD04-256CO | LD_CONST | MISC | ISSUED | HAUL ROUTE PERMIT | SC |
| LD04-276CO | LD_CONST | MISC | ISSUED | INSTALL FLOW MONITOR AND SEWER SAMPLE ONE MANHOLE | SC |
| LD04-282CO | LD_CONST | TRFSGNL | ISSUED | INSTALL TWO TRAFFIC SIGNALS - CIP PROJECT | SC |
| LD05-033CO | LD_CONST | MISC | ISSUED | INSTALL 2-4" IRRIGATION MAINLINE | SC |
| LD05-048CO | LD_CONST | TRFSGNL | ISSUED | CONSTRUCT TRAFFIC SIGNAL AND STRIPING MODIFICATION | SC |
| LD05-104CO | LD_CONST | MISC | ISSUED | TWO TEMP. POWER POLE CROSSINGS AT TRACT MAP 29798-8. FROM LO | CV |
| LD03-279CO | LD_CONST | STR | ISSUED | 12887 MAP VOLUNTARY SANTIAGO ROAD STREET IMPROVEMENTS | RJ |
| LD04-025CO | LD_CONST | STR | ISSUED | 13089 MAP CALLE CEDRAL & CALLE CEREZO | RJ |
| LD04-234CO | LD_CONST | STR | ISSUED | 19582 MAP WINCHESTER RD WIDENING PROJECT PW00-27 | SC |
| LD04-175CO | LD_CONST | MISC | ISSUED | 23143 MAP INSTALL 12 CURB CORES AT SAGE COURT - CROWNE HILL | SC |
| LD04-217CO | LD_CONST | MISC | ISSUED | 23143 MAP 1 53 CURB CORES | CV |
| LD04-218CO | LD_CONST | MISC | ISSUED | 23143 MAP 11 29 CURB CORES | CV |
| LD01-110CO | LD_CONST | STR | ISSUED | 23143 MAP 8 TR 23143-8 STREET IMPROVEMENT PLANS | SC |
| LD04-143CO | LD_CONST | TRFS&S | ISSUED | 23172 MAP HWY 79-SOUTH @ APIS/MEADOWS PKY (COUNTY PP#1843) | SC |
| LD03-258CO | LD_CONST | STR | ISSUED | 23209 MAP LA SERENA WIDENING w/ ROUGH GRADING & EROSION CTRL | CW |
| LD05-094CO | LD_CONST | BORING | ISSUED | 23354 MAP BORE 3 SAMPLE HOLES TO 40 FEET AT YNEZ AND SOLANA | SC |

| Activity | Type of Plan | Status | Address | Description | Plan Checker | |
|------------|--------------|---------|---------|-------------------------|--------------------------------------------------------------|-----|
| LD05-020CO | LD_CONST | MISC | ISSUED | 23513 MAP | HAUL ROUTE PERMIT - TM23513 TO WOLFCREEK DEVELOPMENT | SC |
| LD04-123CO | LD_CONST | PERM | ISSUED | 24991 MAP | HAUL ROUTE PERMIT - RCWD SITE - DIAZ RD N/O CHERRY | SMC |
| LD03-044CO | LD_CONST | STR | ISSUED | 25004 MAP | STREET IMPROVEMENT PLAN | JP |
| LD04-267CO | LD_CONST | MISC | ISSUED | 25004 MAP | HAUL ROUTE PERMIT | SC |
| LD04-309CO | LD_CONST | MISC | ISSUED | 25004 MAP | TEMPORARY POWER POLE CROSSING | RM |
| LD05-071CO | LD_CONST | MISC | ISSUED | 25004 MAP | INSTALL TWO TEMPORARY POWER POLES | SC |
| LD04-212CO | LD_CONST | MISC | ISSUED | 26690 YNEZ RD | INSTALL WATER, SEWER, FIRE CONNECTIONS & DRIVEWAY | SC |
| LD04-172CO | LD_CONST | MISC | ISSUED | 26941 MAP | HAUL ROUTE PERMIT | SC |
| LD04-322CO | LD_CONST | MISC | ISSUED | 27270 MADISON AV | INSTALL TELEPHONE CONDUIT SERVICE CONNECTION | SC |
| LD04-167CO | LD_CONST | BORING | ISSUED | 27987 MAP 1 | SAMPLE WELL MW14A AT W/S OF REDHAWK PKWY S/O 79S | SC |
| LD04-208CO | LD_CONST | MISC | ISSUED | 28545 OLD TOWN FRONT ST | INSTALL SEWER AND WATER TIE-INS FOR COMM. THEATER | SC |
| LD05-053CO | LD_CONST | MISC | ISSUED | 28915 VALLEJO AV | INSTALL THREE TEMP POWER POLES | SC |
| LD04-206CO | LD_CONST | MISC | ISSUED | 29085 VIA NORTE | REMOVE AND REPLACE CONCRETE DRIVEWAY | SC |
| LD04-158CO | LD_CONST | MISC | ISSUED | 29240 TOWNSHIP RD | TEMP POWER CROSSING OVER TOWNSHIP ROAD AT HARVESTON AS SH | SC |
| LD05-069CO | LD_CONST | MISC | ISSUED | 29255 PROVIDENCE RD | 2 -3" CURB CORES | CV |
| LD04-170CO | LD_CONST | MISC | ISSUED | 29275 SANTIAGO RD | HAUL ROUTE PERMIT | SC |
| LD04-120CO | LD_CONST | WTR | ISSUED | 29305 MAP | WOLF VALLEY ROAD (NORTH OF WALLABY) | CW |
| LD04-157CO | LD_CONST | MISC | ISSUED | 29305 MAP | HAUL ROUTE PERMIT FROM VINCENT MORAGA TO WOLF CRK | |
| LD04-277CO | LD_CONST | MISC | ISSUED | 29305 MAP | INSTALL TWO DRIVEWAYS AT N/S OF DEER HOLLOW | SC |
| LD04-279CO | LD_CONST | MISC | ISSUED | 29305 MAP | HAUL ROUTE PERMIT | SC |
| LD04-299CO | LD_CONST | MISC | ISSUED | 29305 MAP | HAUL ROUTE PERMIT | SC |
| LD00-126CO | LD_CONST | STR&SD | ISSUED | 29305 MAP 1 | WOLF VALLEY ROAD IMPROVEMENTS | CW |
| LD03-166CO | LD_CONST | TRFSGNL | ISSUED | 29305 MAP 1 | TRAFFIC SIGNAL, SIGNING & STRIPING PLANS | CW |
| LD04-104CO | LD_CONST | REV | ISSUED | 29305 MAP 1 | WOLF CREEK DR NORTH / LOMA LINDA / CHANNEL IMP (AddSht.6of6) | CW |
| LD02-207CO | LD_CONST | SWR&WT | ISSUED | 29353 MAP | SEWER & WATER IMPROVEMENTS | JP |
| LD02-208CO | LD_CONST | STR&SD | ISSUED | 29353 MAP | STREET, STRIPING & STORM DRAIN IMPROVEMENTS | JP |
| LD04-051CO | LD_CONST | IMPR | ISSUED | 29639 MAP | YNEZ RD BRIDGE WIDENING OVER SANTA GERTRUDIS CREEK - | SMC |

| Activity | Type of Plan | Status | Address | Description | Plan Checker | |
|------------|--------------|--------|---------|-----------------|--------------------------------------------------------------|----|
| LD04-298CO | LD_CONST | MISC | ISSUED | 29639 MAP | HAUL ROUTE PERMIT | SC |
| LD04-317CO | LD_CONST | MISC | ISSUED | 29639 MAP | PERMIT IS FOR THE MEDIAN AND PARKWAY MONUMENTS PREVIOUSLY I | SC |
| LD04-321CO | LD_CONST | MISC | ISSUED | 29639 MAP | *****02/09/05 - REVISION TO HAUL ROUTE - YNEZ RD SOUTH TO W | SC |
| LD04-004CO | LD_CONST | WTR | ISSUED | 29639 MAP 2 | YNEZ & EQUITY WATER RELOCATION PLAN | CW |
| LD04-180CO | LD_CONST | MISC | ISSUED | 29781 PASADA RD | INSTALL DRIVEWAY APPROACH | SC |
| LD03-288CO | LD_CONST | STR | ISSUED | 29798 MAP | STREET IMPROVEMENTS | CW |
| LD03-289CO | LD_CONST | SWR&WT | ISSUED | 29798 MAP | SEWER & WATER IMPROVEMENTS | CW |
| LD04-249CO | LD_CONST | MISC | ISSUED | 29798 MAP | HAUL ROUTE PERMIT | SC |
| LD04-303CO | LD_CONST | MISC | ISSUED | 29798 MAP | INSTALL TRAFFIC SIGNAL CONDUITS | SC |
| LD04-307CO | LD_CONST | MISC | ISSUED | 29798 MAP | TEMP POWER POLE CROSSING FROM EXISTING TRANSFORMER LOCATE | CV |
| LD04-318CO | LD_CONST | WTR | ISSUED | 29798 MAP | INSTALL WATER LINE | SC |
| LD05-100CO | LD_CONST | MISC | ISSUED | 29798 MAP | HAUL ROUTE PERMIT | SC |
| LD05-105CO | LD_CONST | MISC | ISSUED | 29798 MAP | INSTALL TWO RETAINING WALL DRAIN LINES UNDER S/W | SC |
| LD04-308CO | LD_CONST | MISC | ISSUED | 29798 MAP 3 | TEMP POWER POLE CROSSING FROM EXISTING TRANSFORMER LOCATE | CV |
| LD03-224CO | LD_CONST | STR | ISSUED | 29798 MAP 4 | STREET w/ SEWER & WATER IMPROVEMENTS | CW |
| LD03-225CO | LD_CONST | SD | ISSUED | 29798 MAP 4 | STORM DRAIN IMPROVEMENTS | CW |
| LD04-168CO | LD_CONST | MISC | ISSUED | 29798 MAP 5 | TEMPORARY POWERPOLE CROSSINGS AT TRACT 29798-5. THREE 200 A | CV |
| LD03-216CO | LD_CONST | STR | ISSUED | 29798 MAP 6 | STREET w/ SEWER & WATER IMPROVEMENTS | CW |
| LD03-189CO | LD_CONST | STR | ISSUED | 29798 MAP 8 | STREET w/ SEWER & WATER IMPROVEMENTS | CW |
| LD04-311CO | LD_CONST | MISC | ISSUED | 29798 MAP 8 | INSTALL TWO (2) CURB CORES @ EACH LOT PER STD 303 | RM |
| LD03-253CO | LD_CONST | STR | ISSUED | 29798 MAP 9 | STREET w/ SEWER & WATER IMPROVEMENTS | CW |
| LD05-049CO | LD_CONST | MISC | ISSUED | 29961 VIA NORTE | INSTALL TWO DRIVEWAY APPROACHES PER STD. NO. 207 | SC |
| LD04-014CO | LD_CONST | IMPR | ISSUED | 30180 MAP | HWY 79S STREET LIGHT & SIDEWALK IMPROVEMENTS & 3 DRIVEWAYS. | KH |
| LD04-189CO | LD_CONST | MISC | ISSUED | 30180 MAP | INSTALL DRIVEWAY APPROACH PER LD03-291GR PRECISE GRADING PLA | SC |
| LD05-054CO | LD_CONST | STR | ISSUED | 30180 MAP | INSTALL MODIFIED DRIVEWAY 207A - LOT 14 OF PM30180 | SC |
| LD05-070CO | LD_CONST | MISC | ISSUED | 30180 MAP | INSTALL IRRIGATION AND LANDSCAPING IMPROVEMENTS | SC |
| LD04-160CO | LD_CONST | MISC | ISSUED | 30215 VIA NORTE | INSTALL DRIVEWAY APPROACH | SC |

| Activity | Type of Plan | Status | Address | Description | Plan Checker | |
|------------|--------------|--------|---------|-------------------------|------------------------------------------------------------------|-----|
| LD03-041CO | LD_CONST | STR | ISSUED | 30312 MAP | COUNTY STREET & STREET LIGHT IMPROVEMENTS | CW |
| LD03-048CO | LD_CONST | SD | ISSUED | 30468 MAP | STORM DRAIN IMPROVEMENTS | CW |
| LD05-109CO | LD_CONST | MISC | ISSUED | 30667 MAP | INSTALL TEMP POWER POLES AND WIRE CROSSING | SC |
| LD04-296CO | LD_CONST | MISC | ISSUED | 30668 MAP | TEMPORARY POWER POLE CROSSINGS | RM |
| LD04-183CO | LD_CONST | MISC | ISSUED | 30668 MAP 2 | TEMPORARY POWER POLE CROSSING | RM |
| LD04-192CO | LD_CONST | MISC | ISSUED | 30669 MAP | INSTALL FENCE PILASTERS ENCROACHING INTO R.O.W AT | SC |
| LD04-231CO | LD_CONST | MISC | ISSUED | 30757 JEDEDIAH SMITH RD | HAUL ROUTE PERMIT - EXPORT | SC |
| LD02-221CO | LD_CONST | SD | ISSUED | 30797 MAP | STORM DRAIN IMPROVEMENTS | JP |
| LD02-223CO | LD_CONST | IMPR | ISSUED | 30798 MAP | SIDEWALK & STREET LIGHT PLAN | CW |
| LD02-224CO | LD_CONST | SD | ISSUED | 30798 MAP | STORM DRAIN IMPROVEMENTS | CW |
| LD04-289CO | LD_CONST | MISC | ISSUED | 30867 DEL REY RD | INSTALL DRIVEWAY APPROACH | SC |
| LD04-151CO | LD_CONST | PERM | ISSUED | 30990 VIA NORTE | INSTALL SPLIT-RAIL STYLE FENCE 2 FEET BEHIND CURB. ALL REQUIREME | SMC |
| LD03-251CO | LD_CONST | STR&SD | ISSUED | 31143 NICOLAS RD | PORTION OF PARCEL 29 NICOLAS RD & CALLE MEDUSA | RJ |
| LD05-019CO | LD_CONST | MISC | ISSUED | 31217 KAHWEA RD | INSTALL DRIVEWAY APPROACH PER STD 207 | SC |
| LD04-162CO | LD_CONST | STR&SD | ISSUED | 31276 MAP | STREET A, B, C, D & E | KH |
| LD04-173CO | LD_CONST | SWR&WT | ISSUED | 31276 MAP | BRISTOL RD/ASHVILLE LN/LAUREL LN/SOMERVILLE LN | KH |
| LD05-067CO | LD_CONST | MISC | ISSUED | 31276 MAP | TEMPORARY POWER POLE CROSSING | RM |
| LD04-315CO | LD_CONST | MISC | ISSUED | 31621 DEER HOLLOW WY | TEMPORARY POWER POLE CROSSING | RM |
| LD04-235CO | LD_CONST | SD | ISSUED | 31898 MAP | LINE "A" & LINE "B" | CV |
| LD04-304CO | LD_CONST | MISC | ISSUED | 31898 MAP | TEMP POWER POLE CROSSING FROM 200 AMP METER POLE AT 31659 WO | CV |
| LD05-028CO | LD_CONST | MISC | ISSUED | 31898 MAP | INSTALL DRIVEWAY APPROACHE AND CURB DRAIN/CORE | SC |
| LD05-032CO | LD_CONST | MISC | ISSUED | 31951 CALLE CABALLOS | INSTALL ONE (1) CURB CORE | RM |
| LD04-239CO | LD_CONST | SD | ISSUED | 32169 MAP | CONDOS PHASE 2 PRIVATE STORM DRAIN IMPROVEMENTS | RJ |
| LD04-271CO | LD_CONST | MISC | ISSUED | 32215 WOLF VALLEY RD | TEMP POWER POLE CROSSING FROM METER LOCATED AT 32215 WOLF V | CV |
| LD04-270CO | LD_CONST | MISC | ISSUED | 33017 TOPEKA CT | INSTALL 1-3" CURB CORE | CV |
| LD04-312CO | LD_CONST | MISC | ISSUED | 33057 SAGE CT | INSTALL 4' DRIVEWAY PORTION BEHIND APPROACH | SC |
| LD04-226CO | LD_CONST | MISC | ISSUED | 33062 FOX RD | INSTALL TWO CURB CORES AT CROWNE HILL TR23143-6 | SC |

| Activity | Type of Plan | Status | Address | Description | Plan Checker | |
|------------|--------------|---------|---------|----------------------------|--------------------------------------------------------------|-----|
| LD01-119CO | LD_CONST | STR | ISSUED | 3334 MAP | TRACT MAP 3334 LOT 23 | JP |
| LD02-052CO | LD_CONST | TRFSGNL | ISSUED | 3334 MAP | TRAFFIC SIGNAL MODIFICATION RANCHO CAL @ MORAGA RD | JP |
| LD04-152CO | LD_CONST | PERM | ISSUED | 39839 N GENERAL KEARNY RD | WIDEN EXISTING DRIVEWAY | SMC |
| LD04-264CO | LD_CONST | MISC | ISSUED | 40209 CAMINO CAMPOS VERDES | INSTALL PORTION OF DRIVEWAY B/N BACK OF S/W AND PL | SC |
| LD04-225CO | LD_CONST | MISC | ISSUED | 40545 CALLE TORCIDA | INSTALL DRIVEWAY APPROACH PER STANDARD 207A | SC |
| LD05-027CO | LD_CONST | MISC | ISSUED | 40641 CALLE FIESTA | INSTALL STD 207 DRIVEWAY APPROACH. | SC |
| LD05-026CO | LD_CONST | MISC | ISSUED | 40697 CALLE MEDUSA | ENCROACH IN RIGHT OF WAY TO REPAIR SEWER LATERAL AND RESTOR | SC |
| LD05-099CO | LD_CONST | STR&SD | ISSUED | 40810 COUNTY CENTER DR | CONSTRUCT STORM DRAIN MANHOLE AND TIE IN TO SD | |
| LD04-155CO | LD_CONST | STR | ISSUED | 40823 BACCARAT RD | WIDEN EXISTING DRIVEWAY | SC |
| LD04-156CO | LD_CONST | MISC | ISSUED | 40823 BACCARAT RD | WIDEN DRIVEWAY ADDITIONAL 4 FEET | SC |
| LD04-268CO | LD_CONST | MISC | ISSUED | 41645 MARGARITA RD | HAUL ROUTE PERMIT | SC |
| LD04-223CO | LD_CONST | MISC | ISSUED | 42072 5TH ST | INSTALL 6 FOOT HIGH TEMP CL FENCE FOR LD04-173GR | SC |
| LD04-184CO | LD_CONST | MISC | ISSUED | 42115 VANDAMERE CT | INSTALL ONE (1) CURB CORE | RM |
| LD04-255CO | LD_CONST | MISC | ISSUED | 42210 ZEVO DR | TEMP POWER POLE CROSSING OVER ZEVO DRIVE FROM SOUTH TO | SC |
| LD04-251CO | LD_CONST | MISC | ISSUED | 42221 MAIN ST | REMOVE AND REINSTALL CRACKED DRIVEWAY | SC |
| LD05-087CO | LD_CONST | MISC | ISSUED | 42270 WYANDOTTE | INSTALL 5 FOOT DECORATIVE DRIVEWAY BEHIND SIDEWALK | SC |
| LD04-228CO | LD_CONST | MISC | ISSUED | 42310 WINCHESTER RD | HAUL ROUTE PERMIT - OPTI-FORM SITE - EXPORT | SC |
| LD05-066CO | LD_CONST | MISC | ISSUED | 42317 CAMINO ROMO | INSTALL TWO (2) CURB CORES | RM |
| LD04-201CO | LD_CONST | MISC | ISSUED | 42520 RIO NEDO | INSTALL WATER CONNECTIONS & DRIVEWAY PER STD 207A | SC |
| LD04-310CO | LD_CONST | MISC | ISSUED | 42740 JOLLE CT | INSTALL ONE (1) CURB CORE PER STANDARD 303 | RM |
| LD04-153CO | LD_CONST | MISC | ISSUED | 43620 RIDGE PARK DR | HAUL ROUTE PERMIT FROM VINCENT MORAGA TO WOLF CRK | SC |
| LD04-196CO | LD_CONST | MISC | ISSUED | 43620 RIDGE PARK DR | INSTALL UTILITY CONNECTIONS AND DRIVEWAY | SC |
| LD04-269CO | LD_CONST | MISC | ISSUED | 43644 EL FARO PL | INSTALL DRIVEWAY APPROACH PER STD. 207 CONSTRUCT ONE RESIDEN | CV |
| LD04-202CO | LD_CONST | MISC | ISSUED | 43941 VIA MONTALBAN | INSTALL CURB CORE PER CITY STANDARD 303. | SC |
| LD05-103CO | LD_CONST | MISC | ISSUED | 44260 REDHAWK PARKWAY | MONITOR GROUNDWATER WELLS | SC |
| LD05-018CO | LD_CONST | MISC | ISSUED | 44526 PALA RD | INSTALL TEMP AC DRIVEWAY APPROACH FOR STRAWBERRY STAND. | SC |
| LD04-181CO | LD_CONST | MISC | ISSUED | 44755 CORTE SANCHEZ | SET CRANE ON STREET TO PLACE FIBERGLASS POOL | SC |



CITY OF TEMECULA

Land Development Activity Report

Reporting Period 7/1/2004 through 5/1/2005

| Activity | Type of Plan | Status | Address | Description | Plan Checker |
|------------|--------------|--------|---------|----------------------------------------------------------------|--------------|
| LD04-065UT | LD_UTIL | PERM | ISSUED | INSTALL NEW GAS MAIN | JLA |
| LD04-071UT | LD_UTIL | PERM | ISSUED | JULY 2004 BLANKET PERMIT | RM |
| LD04-072UT | LD_UTIL | PERM | ISSUED | JULY 2004 BLANKET PERMIT | RM |
| LD04-073UT | LD_UTIL | PERM | ISSUED | JULY 2004 BLANKET PERMIT | RM |
| LD04-074UT | LD_UTIL | PERM | ISSUED | JULY 2004 BLANKET PERMIT | RM |
| LD04-079UT | LD_UTIL | | ISSUED | AUGUST 2004 BLANKET PERMIT | RM |
| LD04-080UT | LD_UTIL | | ISSUED | AUGUST 2004 BLANKET PERMIT | RM |
| LD04-081UT | LD_UTIL | | ISSUED | AUGUST 2004 BLANKET PERMIT | RM |
| LD04-082UT | LD_UTIL | | ISSUED | AUGUST 2004 BLANKET PERMIT | RM |
| LD04-093UT | LD_UTIL | | ISSUED | INSTALL WATER SERVICE FOR CORPS IRRIGATION SYSTEM AT MURRIET | SMC |
| LD04-096UT | LD_UTIL | | ISSUED | INSTALL 12,109 LF OF CONDUIT AND HAND HOLDS FOR VERIZON'S FIBE | SMC |
| LD04-101UT | LD_UTIL | | ISSUED | SEPTEMBER 2004 BLANKET PERMIT | RM |
| LD04-102UT | LD_UTIL | | ISSUED | SEPTEMBER 2004 BLANKET PERMIT | RM |
| LD04-103UT | LD_UTIL | | ISSUED | SEPTEMBER 2004 BLANKET PERMIT | RM |
| LD04-104UT | LD_UTIL | | ISSUED | SEPTEMBER 2004 BLANKET PERMIT | RM |
| LD04-125UT | LD_UTIL | | ISSUED | OCTOBER 2004 BLANKET PERMIT | RM |
| LD04-126UT | LD_UTIL | | ISSUED | OCTOBER 2004 BLANKET PERMIT | RM |
| LD04-127UT | LD_UTIL | | ISSUED | OCTOBER 2004 BLANKET PERMIT | RM |
| LD04-128UT | LD_UTIL | | ISSUED | OCTOBER 2004 BLANKET PERMIT | RM |
| LD04-135UT | LD_UTIL | | ISSUED | INSTALL SERVICE ACROSS PECHANGA PKWY S/O HWY 79S | SMC |
| LD04-143UT | LD_UTIL | | ISSUED | INSTALL 90 LF OF CONDUIT TO INSTALL CATV U/G SERVI | SMC |
| LD04-144UT | LD_UTIL | | ISSUED | NOVEMBER 2004 BLANKET PERMIT | SMC |
| LD04-145UT | LD_UTIL | | ISSUED | NOVEMBER 2004 BLANKET PERMIT | SMC |

| Activity | Type of Plan | Status | Address | Description | Plan Checker |
|------------|--------------|--------|---------|----------------------------------------------------|--------------|
| LD04-146UT | LD_UTIL | ISSUED | | NOVEMBER 2004 BLANKET PERMIT | SMC |
| LD04-147UT | LD_UTIL | ISSUED | | NOVEMBER 2004 BLANKET PERMIT | SMC |
| LD04-156UT | LD_UTIL | ISSUED | | INSTALL 1" COPPER SERVICE LATERAL - 5' X 6' BELLHO | SMC |
| LD04-159UT | LD_UTIL | ISSUED | | INSTALL 1" COPPER SERVICE LATERAL | SMC |
| LD04-160UT | LD_UTIL | ISSUED | | DECEMBER2004 BLANKET PERMIT | SMC |
| LD04-161UT | LD_UTIL | ISSUED | | DECEMBER 2004 BLANKET PERMIT | SMC |
| LD04-162UT | LD_UTIL | ISSUED | | DECEMBER 2004 BLANKET PERMIT | SMC |
| LD04-163UT | LD_UTIL | ISSUED | | DECEMBER 2004 BLANKET PERMIT | SMC |
| LD05-001UT | LD_UTIL | ISSUED | | 2005 ANNUAL BLANKET PERMIT | SMC |
| LD05-002UT | LD_UTIL | ISSUED | | 2005 ANNUAL BLANKET PERMIT | SMC |
| LD05-003UT | LD_UTIL | ISSUED | | JANUARY 2005 BLANKET PERMIT | SMC |
| LD05-004UT | LD_UTIL | ISSUED | | JANUARY 2005 BLANKET PERMIT | SMC |
| LD05-005UT | LD_UTIL | ISSUED | | JANUARY 2005 BLANKET PERMIT | SMC |
| LD05-006UT | LD_UTIL | ISSUED | | JANUARY 2005 BLANKET PERMIT | SMC |
| LD05-010UT | LD_UTIL | ISSUED | | INSTALL 475 LF OF 2" MAIN ON S/S OF CORONADO DR | SMC |
| LD05-019UT | LD_UTIL | ISSUED | | FEBRUARY 2005 BLANKET PERMIT | SMC |
| LD05-020UT | LD_UTIL | ISSUED | | FEBRUARY 2005 BLANKET PERMIT | SMC |
| LD05-021UT | LD_UTIL | ISSUED | | FEBRUARY 2005 BLANKET PERMIT | SMC |
| LD05-022UT | LD_UTIL | ISSUED | | FEBRUARY 2005 BLANKET PERMIT | SMC |
| LD05-023UT | LD_UTIL | ISSUED | | EXCAVATE 30' X 16" TRENCH FOR GAS CONNECTION | SMC |
| LD05-024UT | LD_UTIL | ISSUED | | REPAIR 20" RECLAIM WATERLINE | SMC |
| LD05-025UT | LD_UTIL | ISSUED | | INSTALL SEWER MANHOLE AND TWO FLOW METERS | SMC |
| LD05-036UT | LD_UTIL | ISSUED | | MARCH 2005 BLANKET PERMIT | SMC |
| LD05-037UT | LD_UTIL | ISSUED | | MARCH 2005 BLANKET PERMIT | SMC |
| LD05-038UT | LD_UTIL | ISSUED | | MARCH 2005 BLANKET PERMIT | SMC |
| LD05-039UT | LD_UTIL | ISSUED | | MARCH 2005 BLANKET PERMIT | SMC |
| LD05-045UT | LD_UTIL | ISSUED | | POT HOLE FOR DEPTH TO WATER LINE | SMC |

| Activity | Type of Plan | Status | Address | Description | Plan Checker |
|------------|--------------|--------|-----------------------|--------------------------------------------------------|--------------|
| LD05-046UT | LD_UTIL | ISSUED | | APRIL 2005 BLANKET PERMIT | SMC |
| LD05-047UT | LD_UTIL | ISSUED | | APRIL 2005 BLANKET PERMIT | SMC |
| LD05-048UT | LD_UTIL | ISSUED | | APRIL 2005 BLANKET PERMIT | SMC |
| LD05-049UT | LD_UTIL | ISSUED | | APRIL 2005 BLANKET PERMIT | SMC |
| LD05-050UT | LD_UTIL | ISSUED | | INSTALL 2,182 LF OF 4 - 5" PVC CONDUITS & 1 VAULT | SMC |
| LD05-054UT | LD_UTIL | ISSUED | | INSTALL 6' OF 1 - 6" & 2 - 5" PVC CONDUITS TO POLE | SMC |
| LD04-113UT | LD_UTIL | ISSUED | 12887 MAP | RELOCATE VERIZON CABLE AT SANTIAGO ROAD | SMC |
| LD04-110UT | LD_UTIL | ISSUED | 13089 MAP | OPERATE AND MAINTAIN UNDERGROUND TELEPHONE FACILIT | SMC |
| LD04-165UT | LD_UTIL | ISSUED | 13423 MAP | POTHOLING FOR RCWD 1305 PRESSURE PIPELINE INTERCONNECT | SMC |
| LD05-041UT | LD_UTIL | ISSUED | 19582 MAP | INSTALL 26' OF 1-4" PVC & 1 - 62"X72"X6" CONC. PAD | SMC |
| LD05-035UT | LD_UTIL | ISSUED | 19872 MAP | INSTALL OVERHEAD TRANSFORMER | SMC |
| LD04-133UT | LD_UTIL | ISSUED | 19939 MAP | DIRECTIONAL BORE PECHANGA @ RAINBOW CYN & EDUARDO | SMC |
| LD04-086UT | LD_UTIL | ISSUED | 20319 MAP | EXCAVATE AND INSTALL 10' OF 2-4" PVC CONDUITS | SMC |
| LD04-167UT | LD_UTIL | ISSUED | 22513 MAP | OPEN 4 STRUCTURES AND MANDREL CONDUITS -- | SMC |
| LD04-100UT | LD_UTIL | ISSUED | 23174 MAP | 00-INSTALL 162 LF OF 1 - 4" PVC CONDUIT & PCC PAD. | SMC |
| LD05-027UT | LD_UTIL | ISSUED | 23561 MAP | EXCAVATE AND INSTALL 154 LF OF 4-5" CONDUITS | SMC |
| LD04-149UT | LD_UTIL | ISSUED | 24085 MAP | INSTALL 2" SERVICE - 4' X 3' BELL & 4' X 2' BELL | SMC |
| LD04-138UT | LD_UTIL | ISSUED | 24085 MAP 2 | INSTALL 2 HOT TAP WATER AND ONE SEWER CONNECTION | SMC |
| LD04-076UT | LD_UTIL | ISSUED | 24134 MAP | INSTALL SERVICE LATERAL | SMC |
| LD03-098UT | LD_UTIL | PERM | 24134 MAP 2 | REPLACE 3' X 5' X 4' SPLICE BOX - 12' COND TO POLE | SMC |
| LD04-141UT | LD_UTIL | ISSUED | 24136 MAP | INSTALL CATV POWER SUPPLY CABINET & 80' OF CONDUIT | SMC |
| LD05-018UT | LD_UTIL | ISSUED | 25004 MAP | TM 25004 - INSTALL GAS MAINS AND CROSSINGS | SMC |
| LD05-042UT | LD_UTIL | ISSUED | 25004 MAP 1 | INSTALL6' OF 1-4" PVC & 1 66" X72"X6" CONC. PAD. | SMC |
| LD04-140UT | LD_UTIL | ISSUED | 26828 MAP | INSTALL CROSSING FOR VERIZON | SMC |
| LD05-040UT | LD_UTIL | ISSUED | 26852 MAP | INSTALL 15' 1-4" PVC & 1 - 66" X 72" X 6" CONC PAD. | SMC |
| LD05-030UT | LD_UTIL | ISSUED | 27270 MADISON AV | INSTALL 8" WATER CONNECTION FOR 27270 MADISON AVE | SMC |
| LD05-013UT | LD_UTIL | ISSUED | 27525 W ENTERPRISE CR | TELEPHONE SERVICE | SMC |

| Activity | Type of Plan | Status | Address | Description | Plan Checker |
|------------|--------------|--------|----------------------------|-----------------------------------------------------------------|--------------|
| LD05-009UT | LD_UTIL | ISSUED | 28459 OLD TOWN FRONT ST | INSTALL GAS SERVICE | SMC |
| LD05-031UT | LD_UTIL | ISSUED | 28459 OLD TOWN FRONT ST | INSTALL A WATER LINE CONNECTION | SMC |
| LD05-059UT | LD_UTIL | ISSUED | 28915 VALLEJO AV | INSTALL NEW GAS SERVICES | SMC |
| LD04-152UT | LD_UTIL | ISSUED | 29133 MAP | INSTALL NEW GAS MAIN ON YNEZ ROAD TO LAURIE RAE LN | SMC |
| LD04-155UT | LD_UTIL | ISSUED | 29133 MAP | INSTALL JOINT TRENCH CROSSING YNEZ ROAD | SMC |
| LD04-077UT | LD_UTIL | ISSUED | 29305 MAP | INSTALL 1487 LF OF 4-INCH GAS LINE | SMC |
| LD04-083UT | LD_UTIL | ISSUED | 29305 MAP | LOWER 55 LF OF 2" PLASTIC GAS MAIN BELOW CHNNL | SMC |
| LD04-157UT | LD_UTIL | ISSUED | 29305 MAP 1 | INSTALL THREE GAS LINE CROSSINGS | SMC |
| LD05-029UT | LD_UTIL | ISSUED | 29305 MAP 1 | INSTALL SCE CROSSING ON PECHANGA PKWAY | SMC |
| LD04-108UT | LD_UTIL | ISSUED | 29353 MAP | INSTALL 2144 LF OF 2-4" CONDUIT FOR COMMUNICATIONS | SMC |
| LD04-154UT | LD_UTIL | ISSUED | 29661 MAP 3 | INSTALL DRY UTILITIES | SMC |
| LD04-137UT | LD_UTIL | ISSUED | 29661 MAP 4 | INSTALL DRY UTILITIES FOR TRACT 29661-4 RORIPAUGH | SMC |
| LD04-136UT | LD_UTIL | ISSUED | 29746 RANCHO CALIFORNIA RD | EXCAVATE AND INSTALL 2" COPPER WATER SERVICE | SMC |
| LD04-095UT | LD_UTIL | ISSUED | 29798 MAP | INSTALL VERIZON CONDUIT XING PECHANGA AT WOLF VALL | SMC |
| LD04-105UT | LD_UTIL | ISSUED | 29798 MAP | TRENCH FOR JOINT UTILITY CONDUITS INCLUDING CROSSINGS AT MAC | SMC |
| LD04-106UT | LD_UTIL | ISSUED | 29798 MAP | INSTALL JOINT UTILITIES | SMC |
| LD04-112UT | LD_UTIL | ISSUED | 29798 MAP | OPERATE AND MAINTAIN TELEPHONE FACILITES | SMC |
| LD05-015UT | LD_UTIL | ISSUED | 29798 MAP | INSTALL JOINT TRENCH FOR VARIOUS DRY UTILITIES INCLUDING GAS AN | SMC |
| LD05-016UT | LD_UTIL | ISSUED | 29798 MAP | INSTALL DRY UTILITIES | SMC |
| LD04-116UT | LD_UTIL | ISSUED | 29798 MAP 1 | OPERATE AND MAINTAIN UNDERGROUND TELEPHONE FACILIT | SMC |
| LD04-117UT | LD_UTIL | ISSUED | 29798 MAP 1 | OPERATE AND MAINTAIN TELEPHONE FACILITIES | SMC |
| LD05-012UT | LD_UTIL | ISSUED | 29798 MAP 10 | OPERATE & MAINTAIN UNDERGROUND TELEPHONE FACILITIE | SMC |
| LD04-085UT | LD_UTIL | ISSUED | 29798 MAP 2 | INSTALL DRY UTILITY SLEEVE CROSSINGS | SMC |
| LD04-097UT | LD_UTIL | ISSUED | 29798 MAP 3 | OPERATE AND MAINTAIN TELEPHONE FACILITIES | SMC |
| LD04-099UT | LD_UTIL | ISSUED | 29798 MAP 3 | OPERATE AND MAINTAIN TELEPHONE FACILITIES | SMC |
| LD04-094UT | LD_UTIL | ISSUED | 29798 MAP 5 | INSTALL JOINT TRENCH FOR ALL DRY UTILITIES | SMC |
| LD04-115UT | LD_UTIL | ISSUED | 29798 MAP 5 | OPERATE AND MAINTAIN TELEPHONE FACILITIES | SMC |

| Activity | Type of Plan | Status | Address | Description | Plan Checker |
|------------|--------------|--------|-------------------------|----------------------------------------------------------------|--------------|
| LD04-109UT | LD_UTIL | ISSUED | 29798 MAP 6 | INSTALL JOINT UTILITY CROSSINGS AT MANATEE WAY AND BASSWOOD CO | SMC |
| LD04-098UT | LD_UTIL | ISSUED | 29798 MAP 7 | OPERATE AND MAINTAIN TELEPHONE FACILITIES | SMC |
| LD04-121UT | LD_UTIL | ISSUED | 29798 MAP 8 | OPERATE AND MAINTAIN TELEPHONE FACILITIES | SMC |
| LD05-014UT | LD_UTIL | ISSUED | 29798 MAP 9 | OPERATE AND MAINTAIN TELEPHONE FACILITIES | SMC |
| LD04-123UT | LD_UTIL | ISSUED | 29928 MAP 2 | INSTALL POWER SUPPLY CABINET | SMC |
| LD04-166UT | LD_UTIL | ISSUED | 30107 MAP | *6// n | SMC |
| LD04-087UT | LD_UTIL | ISSUED | 30621 SAN PASQUAL RD | EXTEND 2" GAS MAIN - CUT & BORE MAIN W/ BELLHOLES | SMC |
| LD04-111UT | LD_UTIL | ISSUED | 30667 MAP | OPERATE AND MAINTAIN TELEPHONE FACILITIES - | SMC |
| LD05-011UT | LD_UTIL | ISSUED | 30667 MAP | INSTALL CONDUITS AND POWER SUPPLY PEDESTAL FOR TV | SMC |
| LD04-120UT | LD_UTIL | ISSUED | 30667 MAP 1 | OPERATE AND MAINTAIN TELEPHONE FACILITIES | SMC |
| LD04-131UT | LD_UTIL | ISSUED | 30667 MAP 2 | OPERATE AND MAINTAIN TELEPHONE FACILITIES | SMC |
| LD04-119UT | LD_UTIL | ISSUED | 30667 MAP 3 | OPERATE AND MAINTAIN TELEPHONE FACILITIES | SMC |
| LD04-118UT | LD_UTIL | ISSUED | 30668 MAP | OPERATE AND MAINTAIN TELEPHONE FACILITIES | SMC |
| LD04-134UT | LD_UTIL | ISSUED | 30668 MAP 1 | OPERATE AND MAINTAIN TELEPHONE FACILITIES | SMC |
| LD04-122UT | LD_UTIL | ISSUED | 30669 MAP | OPERATE AND MAINTAIN TELEPHONE FACILITIES | SMC |
| LD04-130UT | LD_UTIL | ISSUED | 30669 MAP 1 | OPERATE & MAINTAIN TELEPHONE FACILITIES | SMC |
| LD04-132UT | LD_UTIL | ISSUED | 30669 MAP 2 | OPERATE AND MAINTAIN TELEPHONE FACILITIES | SMC |
| LD05-055UT | LD_UTIL | ISSUED | 30820 SAN PASQUAL RD | INSTALL NEW GAS SERVICE- BORE 1' PLASTIC SERVICE | SMC |
| LD05-017UT | LD_UTIL | ISSUED | 30951 RIVERTON LN | EXCAVATE AND INSTALL ONE 1" COPPER SERVICE LATERAL | SMC |
| LD04-153UT | LD_UTIL | ISSUED | 31053 MAP 1 | INSTALL GAS MAIN | SMC |
| LD04-129UT | LD_UTIL | ISSUED | 31075 JEDEDIAH SMITH RD | INSTALL 270 LF OF GAS MAIN | SMC |
| LD04-124UT | LD_UTIL | ISSUED | 31143 NICOLAS RD | INSTALL 2" WATER SERVICE, 12" FOR DET CK, FH CONN | SMC |
| LD05-008UT | LD_UTIL | ISSUED | 31143 NICOLAS RD | INSTALL SERVICE FOR THE PRESBYTERIAN CHURCH | SMC |
| LD04-168UT | LD_UTIL | ISSUED | 31188 JEDEDIAH SMITH RD | INSTALL ELECTRICAL CONDUIT FOR HOUSE SERVICE | SMC |
| LD04-084UT | LD_UTIL | ISSUED | 31259 MAP | INSTALL 72 LF OF SEWER LAT. AND 60 LF OF 24"RCP SD | SMC |
| LD04-114UT | LD_UTIL | ISSUED | 31724 MAP | INSTALL NEW SERVICE 2 EA 3' X 2' AC CUTS - BORE | SMC |
| LD05-043UT | LD_UTIL | ISSUED | 31950 PAUBA RD | GAS SERVICE REPLACEMENT - FIVE 4' X 2' AC CUTS | SMC |

| Activity | Type of Plan | Status | Address | Description | Plan Checker | |
|------------|--------------|--------|------------------------|-----------------------------------------------------------------|--------------------------------------------------|-----|
| LD05-026UT | LD_UTIL | ISSUED | 32015 DE PORTOLA RD | INSTALL ELECTRICAL COMMUNICATION CONDUITS & PEDEST | SMC | |
| LD04-075UT | LD_UTIL | PERM | ISSUED | 3334 MAP | INSTALL 531' MAIN ON MORAGA S/O RANCHO CALIF. RD | SMC |
| LD04-107UT | LD_UTIL | ISSUED | 3334 MAP | INSTALL CALIBRATE & REMOVE SEWER FLOW MONITORING | SMC | |
| LD04-089UT | LD_UTIL | ISSUED | 3552 MAP | INSTALL GAS SERVICE | SMC | |
| LD04-158UT | LD_UTIL | ISSUED | 40045 CALLE MEDUSA | INSTALL NEW GAS SERVICE | SMC | |
| LD04-148UT | LD_UTIL | ISSUED | 40460 CALLE TIARA | INSTALL NEW GAS MAIN | SMC | |
| LD05-052UT | LD_UTIL | ISSUED | 41555 WINCHESTER RD | INSTALL A NEW 1" PLASTIC SERVICE | SMC | |
| LD04-164UT | LD_UTIL | ISSUED | 41593 WINCHESTER RD | LOWER TWO GAS SERVICE LATERALS | SMC | |
| LD05-044UT | LD_UTIL | ISSUED | 41720 WINCHESTER RD | INSTALL WATER SERVICE LATERAL | SMC | |
| LD04-151UT | LD_UTIL | ISSUED | 41823 N ENTERPRISE CR | INSTALL 12" RCWD SERVICE AND VALVE | SMC | |
| LD04-150UT | LD_UTIL | ISSUED | 41965 CALLE CEDRAL | INSTALL NEW GAS SERVICE | SMC | |
| LD05-028UT | LD_UTIL | ISSUED | 42072 5TH ST | INSTALL 240' OF 2" MAIN BY BORING AT SOUTH SIDE OF FIFTH STREET | SMC | |
| LD05-058UT | LD_UTIL | ISSUED | 42072 5TH ST | INSTALL 450 LF OF 1 - 4" ELECTRIC CONDUIT | SMC | |
| LD04-090UT | LD_UTIL | ISSUED | 42108 ROICK DR | INSTALL 116 LF OF CONDUIT AND TWO PULL BOXES | SMC | |
| LD04-139UT | LD_UTIL | ISSUED | 42108 ROICK DR | INSTALL 10" DCDA FOR RCWD, HOT TAP 16" WATERMAIN | SMC | |
| LD04-092UT | LD_UTIL | ISSUED | 43300 SAN FERMIN PL | INSTALL NEW GAS SERVICE | SMC | |
| LD05-032UT | LD_UTIL | ISSUED | 43845 CALLE DE VELARDO | INSTALL GAS SERVICE TO HOME | SMC | |
| LD04-088UT | LD_UTIL | ISSUED | 43961 CALLE DE VELARDO | INSTALL DRIVEWAY APPROACH PER STANDARD 207A | SMC | |
| LD05-057UT | LD_UTIL | ISSUED | 43976 CALLE DE VELARDO | INSTALL NEW GAS SERVICE | SMC | |
| LD05-060UT | LD_UTIL | ISSUED | 44062 PALMA DR | INSTALL NEW GAS MAIN | SMC | |
| LD04-091UT | LD_UTIL | ISSUED | 45000 PECHANGA PARKWAY | INSTALL NEW GAS SERVICE | SMC | |
| LD05-034UT | LD_UTIL | ISSUED | 45414 N WOLF CREEK RD | INSTALL METER AND CONDUIT FOR CATV SERVICE | SMC | |



CITY OF TEMECULA

Land Development Activity Report

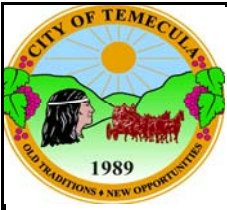
Reporting Period 7/1/2004 through 5/1/2005

| Activity | Type of Plan | Status | Address | Description | Plan Checker | |
|------------|--------------|--------|---------|----------------------------|---------------------------------------------------------------|----|
| LD04-174GR | LD_GRADE | SFR | ISSUED | 13901 MAP | PARCEL 3 | RJ |
| LD04-260GR | LD_GRADE | PA_PGP | ISSUED | 22513 MAP | PARCEL 1 | CW |
| LD04-186GR | LD_GRADE | MGR_RG | ISSUED | 23173 MAP 1 | ROUGH GRADING PLAN FOR PABLO APIS PARK CIP PROJECT PW02-02. E | SC |
| LD05-054GR | LD_GRADE | MGR_RG | ISSUED | 23513 MAP | ROUGH GRADING PLAN (Sht.2-6of6) REVISION #2 | CW |
| LD04-205GR | LD_GRADE | PA_PGP | ISSUED | 25004 MAP | LOTS 75 - 79 MODEL COMPLEX (PA04-0526) | JP |
| LD04-270GR | LD_GRADE | PA_PGP | ISSUED | 25004 MAP | LOT 36 & 37 TEMPORARY SALES TRAILER | JP |
| LD04-163GR | LD_GRADE | MGR_RG | ISSUED | 26521 MAP | ROUGH GRADING w/ EROSION CONTROL | JP |
| LD04-140GR | LD_GRADE | REV | ISSUED | 27987 MAP 1 | PGP (Sht.2Cof15) PHASE 2 REVISION #7 | CW |
| LD05-016GR | LD_GRADE | PA_PGP | ISSUED | 28401 RANCHO CALIFORNIA RD | LOT 22 | |
| LD04-242GR | LD_GRADE | SFR | ISSUED | 28915 VALLEJO AV | LOT 7 OF TRACT 3552 | RJ |
| LD04-241GR | LD_GRADE | SFR | ISSUED | 28945 VALLEJO AV | LOT 8 | RJ |
| LD04-111GR | LD_GRADE | PGP | ISSUED | 29275 SANTIAGO RD | LOT 10 | CW |
| LD02-137GR | LD_GRADE | GR | ISSUED | 29305 MAP | CHANNEL & STORM DRAIN IMPROVEMENT PLANS | CW |
| LD05-024GR | LD_GRADE | MGR_RG | ISSUED | 29305 MAP | GRADING FOR SPORTS COMPLEX - PECHANGA PKY | SC |
| LD04-195GR | LD_GRADE | PA_PGP | ISSUED | 29305 MAP 1 | LOT 18-22 WOLF CREEK DR NORTH (NORTH SIDE) | CW |
| LD04-125GR | LD_GRADE | PGP | ISSUED | 29748 RANCHO CALIFORNIA RD | PORTION OF PARCELS 2 & 3 | JP |
| LD04-171GR | LD_GRADE | PA_PGP | ISSUED | 29775 SANTIAGO RD | LOT 9 | RJ |
| LD05-003GR | LD_GRADE | SFR | ISSUED | 29880 LOS NOGALES RD | LOT 209 TRACT 3929 | RJ |
| LD04-168GR | LD_GRADE | REV | ISSUED | 30107 MAP | PCL 4 PGP (AddSht.2Aof4) REVISION #1 | CW |
| LD04-178GR | LD_GRADE | SFR | ISSUED | 30109 VIA ARBOLEDA | LOT 247 | RJ |
| LD04-259GR | LD_GRADE | PA_PGP | ISSUED | 30180 MAP | PCL 9 & 10 | CW |
| LD04-003GR | LD_GRADE | MGR/RG | ISSUED | 30264 MAP | ROUGH GRADING FOR -1 THRU -F | CW |
| LD04-093GR | LD_GRADE | SFR | ISSUED | 30580 DEL REY RD | TR 3883 LOT 509 SINGLE FAMILY RESIDENCE | RJ |

| Activity | Type of Plan | Status | Address | Description | Plan Checker | |
|------------|--------------|--------|---------|---------------------------|------------------------------------------------|----|
| LD04-234GR | LD_GRADE | PA_PGP | ISSUED | 30607 HIGHWAY 79 SOUTH | PARCEL 8 | CV |
| LD04-167GR | LD_GRADE | SFR | ISSUED | 30630 SAN PASQUAL RD | LOT 36 | RJ |
| LD04-018GR | LD_GRADE | SFR | ISSUED | 30757 JEDEDIAH SMITH RD | TR-9833 LOT 2 & 5 TWO SINGLE FAMILY RESIDENCES | RJ |
| LD03-296GR | LD_GRADE | PGP | ISSUED | 30797 MAP | PCL 1 MINI WAREHOUSE PRECISE GRADING | JP |
| LD04-149GR | LD_GRADE | SFR | ISSUED | 30820 SAN PASQUAL RD | LOT 30 | KH |
| LD03-094GR | LD_GRADE | REV | ISSUED | 31011 JEDEDIAH SMITH RD | TM9833 LOT 8 PGP REVISION #1 | RJ |
| LD04-080GR | LD_GRADE | SFR | ISSUED | 31044 JEDEDIAH SMITH RD | LOT 27 | KH |
| LD04-144GR | LD_GRADE | SFR | ISSUED | 31144 MAP | PCL 2 & 3 | KH |
| LD03-266GR | LD_GRADE | SFR | ISSUED | 31188 JEDEDIAH SMITH RD | LOT 20 | KH |
| LD04-126GR | LD_GRADE | SFR | ISSUED | 31217 KAHWEA RD | LOT 13 TR 21820 | RJ |
| LD04-239GR | LD_GRADE | SFR | ISSUED | 31240 PEGGY LOU LN | PARCEL 2 | RJ |
| LD04-153GR | LD_GRADE | MGR/RG | ISSUED | 31276 MAP | LOTS 1-60 | KH |
| LD03-280GR | LD_GRADE | SFR | ISSUED | 31289 JEDEDIAH SMITH RD | TM9833-2 LOT37 SINGLE FAMILY RESIDENCE | RJ |
| LD04-206GR | LD_GRADE | PA_PGP | ISSUED | 31390 RANCHO COMMUNITY WY | PARCEL 11 | CW |
| LD04-192GR | LD_GRADE | MGR_RG | ISSUED | 31898 MAP | LOTS 1-126 | CV |
| LD04-258GR | LD_GRADE | PA_PGP | ISSUED | 31898 MAP | UNIT 118 - 121 MODELS w/ PARKING LOT | CV |
| LD04-257GR | LD_GRADE | PA_PGP | ISSUED | 31934 HIGHWAY 79 SOUTH | PARCEL 1 | CW |
| LD04-208GR | LD_GRADE | MGR_RG | ISSUED | 32169 MAP | CONDOS PHASE 2 - HARVESTON (Neighborhood 12) | RJ |
| LD04-209GR | LD_GRADE | MGR_RG | ISSUED | 32170 MAP | CONDOS PHASE 2 | RJ |
| LD04-295GR | LD_GRADE | MGR_RG | ISSUED | 32437 MAP | ROUGH GRADING w/ EROSION & SEDIMENT CTRL | RJ |
| LD04-029GR | LD_GRADE | PGP | ISSUED | 32675 HIGHWAY 79 SOUTH | PARCEL 2 PAD B | KH |
| LD04-282GR | LD_GRADE | SFR | ISSUED | 3552 MAP | LOT 29 | KH |
| LD04-175GR | LD_GRADE | SFR | ISSUED | 3883 MAP | LOT 436 | RJ |
| LD04-229GR | LD_GRADE | SFR | ISSUED | 41380 LA SIERRA RD | TR 3929 LOT 215 | RJ |
| LD04-076GR | LD_GRADE | PGP | ISSUED | 41649 MARGARITA RD | PCL 20, 21 & 23 PER LLA PA03-0722 PM 30208 | JP |
| LD04-203GR | LD_GRADE | PA_PGP | ISSUED | 41875 C ST | PARCEL 1 | CW |
| LD04-299GR | LD_GRADE | PA_PGP | ISSUED | 41888 4TH ST | MB 15 / 726 BLOCK 4 LOT 31 & 32 | JP |

| Activity | Type of Plan | Status | Address | Description | Plan Checker | |
|------------|--------------|--------|---------|---------------------|--------------------------------------------------------------|----|
| LD04-173GR | LD_GRADE | PA_PGP | ISSUED | 42072 5TH ST | PENFOLD OLD TOWN | KH |
| LD05-026GR | LD_GRADE | MGR_RG | ISSUED | 42101 MORAGA RD | PLACE APPROX. 300 CY OF FILL LESS THAN ONE FOOT IN THICKNESS | SC |
| LD04-166GR | LD_GRADE | PA_PGP | ISSUED | 42235 WINCHESTER RD | PARCEL 92 & 93 | CW |
| LD04-135GR | LD_GRADE | PGP | ISSUED | 42520 RIO NEDO | PCL 20 & 21 OF PM21383 / PCL 33 OF PM21382 | CW |
| LD04-090GR | LD_GRADE | PGP | ISSUED | 43040 MARGARITA RD | LOT 79 | CW |
| LD04-098GR | LD_GRADE | SFR | ISSUED | 43520 SAN FERMIN PL | GRADING AND EROSION CONTROL PERMIT/ TR9833-2 LOT 22 EARTHWOR | RJ |
| LD04-217GR | LD_GRADE | SFR | ISSUED | 44000 PALMA DR | LOT 30 SINGLE FAMILY RESIDENCE | RJ |
| LD04-202GR | LD_GRADE | SFR | ISSUED | 44044 MOUNTAIN VIEW | PARCEL 3 | RJ |
| LD04-264GR | LD_GRADE | SFR | ISSUED | 6228 MAP | PARCEL 3 | RJ |
| LD04-079GR | LD_GRADE | SFR | ISSUED | 9833 MAP | LOT 1 | KH |

APPENDIX G
Construction Inspection Checklist



NPDES Construction Activity Compliance Inspection Notice

Public Works Department / NPDES
 43200 Business Park Dr. Temecula, CA
 (909) 694-6411

| | | | |
|------------------------|------------|---------------|---------------------|
| Project #: | WDID#: | Weather: | Date: |
| Grading permit number: | Developer: | Inspected by: | Date last inspected |

Project location:

NOTICE: In conformance with the National Pollutant Discharge Elimination System (NPDES) Municipal Separate Storm Sewer System (MS4) permit for the Santa Margarita Watershed, the Cities and County are mandated to perform NPDES construction site inspections to determine if the site is in compliance or not in compliance with Storm Water Ordinances, regulations, and codes.

Check the box adjacent to items for which deficiencies were observed.

| | | |
|----|---------------------------------------------------------------------------|-----|
| 1 | Tracking controls in place at all entry and exits. | [] |
| 2 | Tracking of sediment beyond project perimeter. | [] |
| 3 | Interior and impacted exterior streets are swept & free of pollutants. | [] |
| 4 | Perimeter controls are in place and maintained. | [] |
| 5 | Sediment controls are present on all interior streets and maintained. | [] |
| 6 | BMP's in place at CB's & Discharge points / Functioning / Maintained. | [] |
| 7 | Sediment and/or other pollutants at inlets or discharge points. | [] |
| 8 | All other sediment controls are in place / functioning / maintained. | [] |
| 9 | Sediment discharge beyond project limits or in area requiring protection. | [] |
| 10 | All slopes received erosion controls. | [] |
| 11 | Erosion present on slopes. | [] |
| 12 | Non-stormwater discharges observed / evident. | [] |
| 13 | Construction materials stored in designated areas. | [] |
| 14 | Construction materials stored properly. | [] |
| 15 | Liquid materials stored properly. | [] |
| 16 | PCC waste storage area in place and maintained. | [] |
| 17 | Waste materials stored properly. | [] |
| 18 | BMP's in place for equipment maintenance / functioning / maintained. | [] |
| 19 | Litter / housekeeping / maintained. | [] |
| 20 | | [] |

NOTICE: The Porter-Cologne Water Quality Control Act of the State of California states in part that persons violating water quality objectives can be held civilly and criminally liable and the Federal Clean Water Act states in part that persons violating the Act may be held civilly and criminally liable.

Comments: _____

| | | | |
|---------------|--------------|--------|-------|
| Site Contact: | Received by: | Phone: | Time: |
|---------------|--------------|--------|-------|

Action taken:

Verbal [] Written warning [] Administrative citation [] Corrective Action Notice [] Stop Work Notice []

NPDES Inspection Frequency Sheet

| High Priority Sites <i>(Inspect once every two weeks during the wet season)</i> | 1 | 2 | 3 | 4 | 5 | 6 | 7 | 8 | 9 | 10 | 11 | 12 | 13 | 14 | 15 | 16 | 17 | 18 | 19 | 20 | 21 | 22 | 23 | 24 | 25 | 26 | 27 | 28 | 29 | 30 | 31 | Inspector |
|---------------------------------------------------------------------------------|---|---|---|---|---|---|---|---|---|----|----|----|----|----|----|----|----|----|----|----|----|----|----|----|----|----|----|----|----|----|----|-----------|
| Pechanga Stormdrain & Channel - COT | | | | | | | | | | | | | | | | | | | | | | | | | | | | | | | | Rudy |
| Pechanga Parkway | | | | | | | | | | | | | | | | | | | | | | | | | | | | | | | | |
| Wolf Creek | | | | | | | | | | | | | | | | | | | | | | | | | | | | | | | | Pat |
| LLC (Standard Pacific) | | | | | | | | | | | | | | | | | | | | | | | | | | | | | | | | |
| Aspen (Standard Pacific) | | | | | | | | | | | | | | | | | | | | | | | | | | | | | | | | |
| (Woodside Homes) | | | | | | | | | | | | | | | | | | | | | | | | | | | | | | | | |
| Sequoia (William Lyons) | | | | | | | | | | | | | | | | | | | | | | | | | | | | | | | | |
| Cedar (Standard Pacific) | | | | | | | | | | | | | | | | | | | | | | | | | | | | | | | | |
| Copper Moon (DL Horton) | | | | | | | | | | | | | | | | | | | | | | | | | | | | | | | | |
| Crowne Hill | | | | | | | | | | | | | | | | | | | | | | | | | | | | | | | | Doug |
| Vacant Lot (Newland) | | | | | | | | | | | | | | | | | | | | | | | | | | | | | | | | |
| Astoria (Greystone) | | | | | | | | | | | | | | | | | | | | | | | | | | | | | | | | |
| The Reserve (Craftsman Homes) | | | | | | | | | | | | | | | | | | | | | | | | | | | | | | | | |
| School Site (Edge Development) | | | | | | | | | | | | | | | | | | | | | | | | | | | | | | | | |
| Roripaugh Ranch Panhandle | | | | | | | | | | | | | | | | | | | | | | | | | | | | | | | | Jack |
| Ashby LLC | | | | | | | | | | | | | | | | | | | | | | | | | | | | | | | | |
| Griffin | | | | | | | | | | | | | | | | | | | | | | | | | | | | | | | | |
| Meeker | | | | | | | | | | | | | | | | | | | | | | | | | | | | | | | | |
| Davidson | | | | | | | | | | | | | | | | | | | | | | | | | | | | | | | | |
| Shea | | | | | | | | | | | | | | | | | | | | | | | | | | | | | | | | |
| Continental | | | | | | | | | | | | | | | | | | | | | | | | | | | | | | | | |
| Roripaugh Ranch Pan | | | | | | | | | | | | | | | | | | | | | | | | | | | | | | | | Jack |
| Ashby LLC | | | | | | | | | | | | | | | | | | | | | | | | | | | | | | | | |
| Harveston Phase I | | | | | | | | | | | | | | | | | | | | | | | | | | | | | | | | Doug |
| Cape May (Suffolk) | | | | | | | | | | | | | | | | | | | | | | | | | | | | | | | | |
| Lake House (LnrHomes) | | | | | | | | | | | | | | | | | | | | | | | | | | | | | | | | |
| Vacant Lot (Greystone) | | | | | | | | | | | | | | | | | | | | | | | | | | | | | | | | |
| Harveston Phase II | | | | | | | | | | | | | | | | | | | | | | | | | | | | | | | | Doug |
| Chatham (USHome) | | | | | | | | | | | | | | | | | | | | | | | | | | | | | | | | |
| Lake Front Cottages (U.S. Home) | | | | | | | | | | | | | | | | | | | | | | | | | | | | | | | | |
| St. Augustine (Christopher) | | | | | | | | | | | | | | | | | | | | | | | | | | | | | | | | |
| Ashville (Greystone) | | | | | | | | | | | | | | | | | | | | | | | | | | | | | | | | |
| Sarasota (Greystone) | | | | | | | | | | | | | | | | | | | | | | | | | | | | | | | | |
| Auburn Lane (LnrHomes) | | | | | | | | | | | | | | | | | | | | | | | | | | | | | | | | |
| Sausalito (LnrHomes) | | | | | | | | | | | | | | | | | | | | | | | | | | | | | | | | |
| Savannah (Wlyons) | | | | | | | | | | | | | | | | | | | | | | | | | | | | | | | | |
| Sausalito (Greystone) | | | | | | | | | | | | | | | | | | | | | | | | | | | | | | | | |
| Walden (Christopher) | | | | | | | | | | | | | | | | | | | | | | | | | | | | | | | | |

I = Inspected
 N = Inspection Notice Issued
 F = Follow-Up Required
 M/C = Met/Called Responsible Party

CIT = Citation Issued
 WB = SDRWQCB Rep Present
 ** = New Site

NPDES Inspection Frequency Sheet

| High Priority Sites (<i>Inspect once every two weeks during the wet season</i>) | | | | | | | | | | | | | | | | | | | | | | | | | | | | | | | Inspector | | |
|-----------------------------------------------------------------------------------|---|---|---|---|---|---|---|---|---|----|----|----|----|----|----|----|----|----|----|----|----|----|----|----|----|----|----|----|----|----|-----------|--|------|
| | 1 | 2 | 3 | 4 | 5 | 6 | 7 | 8 | 9 | 10 | 11 | 12 | 13 | 14 | 15 | 16 | 17 | 18 | 19 | 20 | 21 | 22 | 23 | 24 | 25 | 26 | 27 | 28 | 29 | 30 | 31 | | |
| Common Areas & Undeveloped (LnrCommunities) | | | | | | | | | | | | | | | | | | | | | | | | | | | | | | | | | |
| Harveston Phase III | | | | | | | | | | | | | | | | | | | | | | | | | | | | | | | | | Jack |
| Lennar | | | | | | | | | | | | | | | | | | | | | | | | | | | | | | | | | |
| Temecula Estates - K&B Homes | | | | | | | | | | | | | | | | | | | | | | | | | | | | | | | | | Doug |
| Serafina and Murrieta Hot Springs | | | | | | | | | | | | | | | | | | | | | | | | | | | | | | | | | |
| Temecula Creek Villages - Wermers | | | | | | | | | | | | | | | | | | | | | | | | | | | | | | | | | Jack |
| 79 South e/o Pechanga | | | | | | | | | | | | | | | | | | | | | | | | | | | | | | | | | |
| Creeside Plaza - Peninsula Retail Dev. | | | | | | | | | | | | | | | | | | | | | | | | | | | | | | | | | Jack |
| 79 South & Pechanga | | | | | | | | | | | | | | | | | | | | | | | | | | | | | | | | | |
| Travado - Shea Homes | | | | | | | | | | | | | | | | | | | | | | | | | | | | | | | | | Doug |
| Cebu Drive | | | | | | | | | | | | | | | | | | | | | | | | | | | | | | | | | |
| Single Family Residence - Fred Connary | | | | | | | | | | | | | | | | | | | | | | | | | | | | | | | | | Pat |
| 30876 Lolita Road | | | | | | | | | | | | | | | | | | | | | | | | | | | | | | | | | |
| Single Family Residence - Michael Lavasani | | | | | | | | | | | | | | | | | | | | | | | | | | | | | | | | | Pat |
| 30854 Lolita Road | | | | | | | | | | | | | | | | | | | | | | | | | | | | | | | | | |
| Vacant Lot - COT | | | | | | | | | | | | | | | | | | | | | | | | | | | | | | | | | Jack |
| End of Front Street (& 79 South) | | | | | | | | | | | | | | | | | | | | | | | | | | | | | | | | | |
| Vacant Lot - American Property Enterprises | | | | | | | | | | | | | | | | | | | | | | | | | | | | | | | | | |
| Tierra Vista & Ynez | | | | | | | | | | | | | | | | | | | | | | | | | | | | | | | | | |
| Commercial Building - | | | | | | | | | | | | | | | | | | | | | | | | | | | | | | | | | Jack |
| 42072 Fifth Street (next to Texas Lil's) | | | | | | | | | | | | | | | | | | | | | | | | | | | | | | | | | |
| Old Town Community Theatre - COT | | | | | | | | | | | | | | | | | | | | | | | | | | | | | | | | | |
| West end of 4rth Street | | | | | | | | | | | | | | | | | | | | | | | | | | | | | | | | | |
| Commercial Building - Craig Majewski | | | | | | | | | | | | | | | | | | | | | | | | | | | | | | | | | Jack |
| Enterprise Circle West (corner site) | | | | | | | | | | | | | | | | | | | | | | | | | | | | | | | | | |
| Pechanga Sports Complex - COT | | | | | | | | | | | | | | | | | | | | | | | | | | | | | | | | | |
| Pechanga & Deer Hollow Drive | | | | | | | | | | | | | | | | | | | | | | | | | | | | | | | | | |
| Multiple Single Family - Gallery Homes | | | | | | | | | | | | | | | | | | | | | | | | | | | | | | | | | |
| Santiago Road e/o John Warner | | | | | | | | | | | | | | | | | | | | | | | | | | | | | | | | | |
| | | | | | | | | | | | | | | | | | | | | | | | | | | | | | | | | | |
| | | | | | | | | | | | | | | | | | | | | | | | | | | | | | | | | | |
| | | | | | | | | | | | | | | | | | | | | | | | | | | | | | | | | | |
| | | | | | | | | | | | | | | | | | | | | | | | | | | | | | | | | | |
| | | | | | | | | | | | | | | | | | | | | | | | | | | | | | | | | | |

I = Inspected
 N = Inspection Notice Issued
 F = Follow-Up Required
 M/C = Met/Called Responsible Party

CIT = Citation Issued
 WB = SDRWQCB Rep Present
 ** = New Site

NPDES Inspection Frequency Sheet

| Medium Priority Sites (<i>Inspect three times during the wet season</i>) | | | | | | | | | | | | | | | | | | | | | | | | | | | | | | | | Inspector | | |
|-----------------------------------------------------------------------------------|---|---|---|---|---|---|---|---|---|----|----|----|----|----|----|----|----|----|----|----|----|----|----|----|----|----|----|----|----|----|----|-----------|--|--------|
| | 1 | 2 | 3 | 4 | 5 | 6 | 7 | 8 | 9 | 10 | 11 | 12 | 13 | 14 | 15 | 16 | 17 | 18 | 19 | 20 | 21 | 22 | 23 | 24 | 25 | 26 | 27 | 28 | 29 | 30 | 31 | | | |
| Jefferson Ave. Rehab. - COT | | | | | | | | | | | | | | | | | | | | | | | | | | | | | | | | | | |
| Overland to Rancho California Road | | | | | | | | | | | | | | | | | | | | | | | | | | | | | | | | | | |
| Redhawk Office Park - Reno | | | | | | | | | | | | | | | | | | | | | | | | | | | | | | | | | | Doug |
| 43648 Ridge Park Dr s/o Business Park Dr | | | | | | | | | | | | | | | | | | | | | | | | | | | | | | | | | | |
| Linfield High School - | | | | | | | | | | | | | | | | | | | | | | | | | | | | | | | | | | Doug |
| 31950 Pauba Road | | | | | | | | | | | | | | | | | | | | | | | | | | | | | | | | | | |
| Rancho Comm. Church - Diffenbaugh | | | | | | | | | | | | | | | | | | | | | | | | | | | | | | | | | | Doug |
| 79 South e/o Pechanga | | | | | | | | | | | | | | | | | | | | | | | | | | | | | | | | | | |
| Multiple Single Family - Rilington | | | | | | | | | | | | | | | | | | | | | | | | | | | | | | | | | | Doug |
| Pauba & Brighton Ridge Lane (near fire dept.) | | | | | | | | | | | | | | | | | | | | | | | | | | | | | | | | | | |
| Avondale - Richmond American | | | | | | | | | | | | | | | | | | | | | | | | | | | | | | | | | | Doug |
| Rita & Seraphina | | | | | | | | | | | | | | | | | | | | | | | | | | | | | | | | | | |
| The Fountains Apartments - RCH Construction | | | | | | | | | | | | | | | | | | | | | | | | | | | | | | | | | | Doug |
| Winchester & Nicholas | | | | | | | | | | | | | | | | | | | | | | | | | | | | | | | | | | |
| Commercial Plaza - D&D Construction | | | | | | | | | | | | | | | | | | | | | | | | | | | | | | | | | | Pat |
| 40573 Margarita (& N.G.Kearney (across Promenade mall)) | | | | | | | | | | | | | | | | | | | | | | | | | | | | | | | | | | |
| Vail Ranch Town Square - Square One | | | | | | | | | | | | | | | | | | | | | | | | | | | | | | | | | | Doug |
| Mahlon Vail Circle & Wolfe Store Road | | | | | | | | | | | | | | | | | | | | | | | | | | | | | | | | | | |
| Office Center - Sigma | | | | | | | | | | | | | | | | | | | | | | | | | | | | | | | | | | Doug |
| 42149/42175/42215/42239/42261 Zevo | | | | | | | | | | | | | | | | | | | | | | | | | | | | | | | | | | |
| Sand Operation - Garrett Group | | | | | | | | | | | | | | | | | | | | | | | | | | | | | | | | | | Jack |
| Dendy Pwy | | | | | | | | | | | | | | | | | | | | | | | | | | | | | | | | | | |
| Gallery Traditions - Michael Lanni | | | | | | | | | | | | | | | | | | | | | | | | | | | | | | | | | | Jack |
| Ynez s/o Pauba | | | | | | | | | | | | | | | | | | | | | | | | | | | | | | | | | | |
| Grace Presbyterian Church - | | | | | | | | | | | | | | | | | | | | | | | | | | | | | | | | | | Jack |
| 31143 Nicolas (c/o Calle Medusa) | | | | | | | | | | | | | | | | | | | | | | | | | | | | | | | | | | 03-278 |
| Red Lobster - Bergman Companies | | | | | | | | | | | | | | | | | | | | | | | | | | | | | | | | | | Pat |
| 41649 Margarita & Overland | | | | | | | | | | | | | | | | | | | | | | | | | | | | | | | | | | |
| Margarita Office Center - | | | | | | | | | | | | | | | | | | | | | | | | | | | | | | | | | | Doug |
| 43040 Margarita Raod | | | | | | | | | | | | | | | | | | | | | | | | | | | | | | | | | | |
| Multiple Single Family - Seaway Properties | | | | | | | | | | | | | | | | | | | | | | | | | | | | | | | | | | |
| Santiago e/o Vallejo | | | | | | | | | | | | | | | | | | | | | | | | | | | | | | | | | | |
| Multiple Single Family - Legacy Group | | | | | | | | | | | | | | | | | | | | | | | | | | | | | | | | | | Pat |
| Pauba & Calle Cedral | | | | | | | | | | | | | | | | | | | | | | | | | | | | | | | | | | |
| Rancho Community Church - | | | | | | | | | | | | | | | | | | | | | | | | | | | | | | | | | | Doug |
| 43300 Business Park Drive | | | | | | | | | | | | | | | | | | | | | | | | | | | | | | | | | | |
| Rancho Baptist Church - | | | | | | | | | | | | | | | | | | | | | | | | | | | | | | | | | | Doug |
| 29775 Santiago Road & C Street | | | | | | | | | | | | | | | | | | | | | | | | | | | | | | | | | | |

I = Inspected
 N = Inspection Notice Issued
 F = Follow-Up Required
 M/C = Met/Called Responsible Party

CIT = Citation Issued
 WB = SDRWQCB Rep Present
 ** = New Site

NPDES Inspection Frequency Sheet

| Low Priority Sites <i>(Inspect as needed during the wet season)</i> | 1 | 2 | 3 | 4 | 5 | 6 | 7 | 8 | 9 | 10 | 11 | 12 | 13 | 14 | 15 | 16 | 17 | 18 | 19 | 20 | 21 | 22 | 23 | 24 | 25 | 26 | 27 | 28 | 29 | 30 | 31 | Inspector | | |
|----------------------------------------------------------------------------|---|---|---|---|---|---|---|---|---|----|----|----|----|----|----|----|----|----|----|----|----|----|----|----|----|----|----|----|----|----|----|-----------|------|------|
| Commercial Building - COT | | | | | | | | | | | | | | | | | | | | | | | | | | | | | | | | | | Jack |
| 41911 5th Street (& Mercedes) | | | | | | | | | | | | | | | | | | | | | | | | | | | | | | | | | | |
| Single Family - Glenn Plunkett (RCWD easement) | | | | | | | | | | | | | | | | | | | | | | | | | | | | | | | | | Doug | |
| 43943 Calle De Velardo | | | | | | | | | | | | | | | | | | | | | | | | | | | | | | | | | | |
| Single Family - Allen Pulsipher (below Plunkett) | | | | | | | | | | | | | | | | | | | | | | | | | | | | | | | | | Pat | |
| 43961 Calle De Velardo | | | | | | | | | | | | | | | | | | | | | | | | | | | | | | | | | | |
| Single Family - Eric Boehm | | | | | | | | | | | | | | | | | | | | | | | | | | | | | | | | | Jack | |
| 43976 Calle De Velardo near Jedediah Smith | | | | | | | | | | | | | | | | | | | | | | | | | | | | | | | | | | |
| Single Family - Dennis Marchand | | | | | | | | | | | | | | | | | | | | | | | | | | | | | | | | | Jack | |
| 43525 Calle De Velardo (end of culdesac) | | | | | | | | | | | | | | | | | | | | | | | | | | | | | | | | | | |
| Single Family - Azim Azhand | | | | | | | | | | | | | | | | | | | | | | | | | | | | | | | | | Jack | |
| 31097 Jedediah Smith w/o El Faro | | | | | | | | | | | | | | | | | | | | | | | | | | | | | | | | | | |
| Single Family - Peter Pacitto | | | | | | | | | | | | | | | | | | | | | | | | | | | | | | | | | Jack | |
| 31075 Jedediah Smith w/o El Faro | | | | | | | | | | | | | | | | | | | | | | | | | | | | | | | | | | |
| Single Family - David Zamiski | | | | | | | | | | | | | | | | | | | | | | | | | | | | | | | | | Jack | |
| 31043 Jedediah Smith w/o El Faro | | | | | | | | | | | | | | | | | | | | | | | | | | | | | | | | | | |
| Single Family - Charlie Perry | | | | | | | | | | | | | | | | | | | | | | | | | | | | | | | | | Doug | |
| Jedediah Smith & Pescado | | | | | | | | | | | | | | | | | | | | | | | | | | | | | | | | | | |
| Single Family - Paul Gupta | | | | | | | | | | | | | | | | | | | | | | | | | | | | | | | | | Jack | |
| 30943 Jedediah Smith w/o El Faro | | | | | | | | | | | | | | | | | | | | | | | | | | | | | | | | | | |
| Single Family - James Fay | | | | | | | | | | | | | | | | | | | | | | | | | | | | | | | | | Doug | |
| 31188 Jedediah Smith | | | | | | | | | | | | | | | | | | | | | | | | | | | | | | | | | | |
| Single Family - Art Gaitan | | | | | | | | | | | | | | | | | | | | | | | | | | | | | | | | | Doug | |
| 43710 Piasano (end of culdesac) | | | | | | | | | | | | | | | | | | | | | | | | | | | | | | | | | | |
| Single Family - Nicholas Konicki | | | | | | | | | | | | | | | | | | | | | | | | | | | | | | | | | Pat | |
| 31107 Mariposa Pl. (end of culdesac) | | | | | | | | | | | | | | | | | | | | | | | | | | | | | | | | | | |
| Single Family - Michael McKernon | | | | | | | | | | | | | | | | | | | | | | | | | | | | | | | | | Doug | |
| 40045 Calle Medusa & Enfield | | | | | | | | | | | | | | | | | | | | | | | | | | | | | | | | | | |
| Single Family - Troy Juve | | | | | | | | | | | | | | | | | | | | | | | | | | | | | | | | | Pat | |
| Enfield Lane (end of street) | | | | | | | | | | | | | | | | | | | | | | | | | | | | | | | | | | |
| Single Family - Stonecrest Custom Homes | | | | | | | | | | | | | | | | | | | | | | | | | | | | | | | | | Doug | |
| 43165/43195 Avenida De San Pasqual | | | | | | | | | | | | | | | | | | | | | | | | | | | | | | | | | | |
| Single Family - Michael McLaren | | | | | | | | | | | | | | | | | | | | | | | | | | | | | | | | | Doug | |
| 30630 Avenida De San Pasqual Rd | | | | | | | | | | | | | | | | | | | | | | | | | | | | | | | | | | |
| Single Family Residence - Walter Zeppier Construction | | | | | | | | | | | | | | | | | | | | | | | | | | | | | | | | | Pat | |
| 40545 Calle Torcida | | | | | | | | | | | | | | | | | | | | | | | | | | | | | | | | | | |
| Single Family - Tim Long | | | | | | | | | | | | | | | | | | | | | | | | | | | | | | | | | Pat | |
| John Warner & Jeramie Drive | | | | | | | | | | | | | | | | | | | | | | | | | | | | | | | | | | |

I = Inspected
 N = Inspection Notice Issued
 F = Follow-Up Required
 M/C = Met/Called Responsible Party

CIT = Citation Issued
 WB = SDRWQCB Rep Present
 ** = New Site

NPDES Inspection Frequency Sheet

| Low Priority Sites (Inspect as needed during the wet season) | | | | | | | | | | | | | | | | | | | | | | | | | | | | | | | Inspector | |
|--------------------------------------------------------------|---|---|---|---|---|---|---|---|---|----|----|----|----|----|----|----|----|----|----|----|----|----|----|----|----|----|----|----|----|----|-----------|------|
| | 1 | 2 | 3 | 4 | 5 | 6 | 7 | 8 | 9 | 10 | 11 | 12 | 13 | 14 | 15 | 16 | 17 | 18 | 19 | 20 | 21 | 22 | 23 | 24 | 25 | 26 | 27 | 28 | 29 | 30 | 31 | |
| Single Family - MER | | | | | | | | | | | | | | | | | | | | | | | | | | | | | | | | Doug |
| 43681 Piasano Place (top of Cul de Sac) | | | | | | | | | | | | | | | | | | | | | | | | | | | | | | | | |
| Commercial Building - CCM | | | | | | | | | | | | | | | | | | | | | | | | | | | | | | | | Jack |
| 42210 Roick Dr. | | | | | | | | | | | | | | | | | | | | | | | | | | | | | | | | |
| Commercial Center - Taylor Frager | | | | | | | | | | | | | | | | | | | | | | | | | | | | | | | | |
| Calle Empleado & Rio Nedo | | | | | | | | | | | | | | | | | | | | | | | | | | | | | | | | |
| Single Family - (Rudy Berry?) | | | | | | | | | | | | | | | | | | | | | | | | | | | | | | | | Pat |
| 41965 (41837?) Calle Cedral | | | | | | | | | | | | | | | | | | | | | | | | | | | | | | | | |
| Single Family - | | | | | | | | | | | | | | | | | | | | | | | | | | | | | | | | Pat |
| 40641 Calle Fiesta | | | | | | | | | | | | | | | | | | | | | | | | | | | | | | | | |
| Single Family - | | | | | | | | | | | | | | | | | | | | | | | | | | | | | | | | Doug |
| 40410 Carmelita Circle | | | | | | | | | | | | | | | | | | | | | | | | | | | | | | | | |
| Commercial Center - | | | | | | | | | | | | | | | | | | | | | | | | | | | | | | | | Doug |
| 40940/40980 County Center Drive | | | | | | | | | | | | | | | | | | | | | | | | | | | | | | | | |
| Single Family - | | | | | | | | | | | | | | | | | | | | | | | | | | | | | | | | Pat |
| 43644 El Faro | | | | | | | | | | | | | | | | | | | | | | | | | | | | | | | | |
| Single Family - | | | | | | | | | | | | | | | | | | | | | | | | | | | | | | | | Pat |
| 32509 Hupa Drive | | | | | | | | | | | | | | | | | | | | | | | | | | | | | | | | |
| Commercial Center - | | | | | | | | | | | | | | | | | | | | | | | | | | | | | | | | Doug |
| 28459 Old Town Front Street | | | | | | | | | | | | | | | | | | | | | | | | | | | | | | | | |
| Single Family - | | | | | | | | | | | | | | | | | | | | | | | | | | | | | | | | Pat |
| 30951 Riverton Lane | | | | | | | | | | | | | | | | | | | | | | | | | | | | | | | | |
| Vacant Lot - Michael Lanni | | | | | | | | | | | | | | | | | | | | | | | | | | | | | | | | Jack |
| Ynez n/o Santiago | | | | | | | | | | | | | | | | | | | | | | | | | | | | | | | | |
| Single Family - | | | | | | | | | | | | | | | | | | | | | | | | | | | | | | | | Jack |
| 31191 Kahwea Road | | | | | | | | | | | | | | | | | | | | | | | | | | | | | | | | |
| Commercial Center - Winchester Pavilion | | | | | | | | | | | | | | | | | | | | | | | | | | | | | | | | Doug |
| 41720 Winchester (e/o Enterprise Circle) | | | | | | | | | | | | | | | | | | | | | | | | | | | | | | | | |
| Commercial Center - Rancon Real estate | | | | | | | | | | | | | | | | | | | | | | | | | | | | | | | | Doug |
| 27247 Madison Avenue | | | | | | | | | | | | | | | | | | | | | | | | | | | | | | | | |
| Single Family - Robert Connors ** | | | | | | | | | | | | | | | | | | | | | | | | | | | | | | | | |
| 31011 Jedediah Smith | | | | | | | | | | | | | | | | | | | | | | | | | | | | | | | | |
| Single Family - Legacy Group Inc | | | | | | | | | | | | | | | | | | | | | | | | | | | | | | | | Pat |
| 43224 Ormsby | | | | | | | | | | | | | | | | | | | | | | | | | | | | | | | | |
| Single Family - Halper | | | | | | | | | | | | | | | | | | | | | | | | | | | | | | | | Jack |
| 44000 Palma Drive (end of culdesac) | | | | | | | | | | | | | | | | | | | | | | | | | | | | | | | | |
| Commercial Building - Kaylind Development | | | | | | | | | | | | | | | | | | | | | | | | | | | | | | | | Jack |
| 42044 Winchester w/o Diaz | | | | | | | | | | | | | | | | | | | | | | | | | | | | | | | | |

I = Inspected
 N = Inspection Notice Issued
 F = Follow-Up Required
 M/C = Met/Called Responsible Party

CIT = Citation Issued
 WB = SDRWQCB Rep Present
 ** = New Site

NPDES Inspection Frequency Sheet

| Low Priority Sites <i>(Inspect as needed during the wet season)</i> | 1 | 2 | 3 | 4 | 5 | 6 | 7 | 8 | 9 | 10 | 11 | 12 | 13 | 14 | 15 | 16 | 17 | 18 | 19 | 20 | 21 | 22 | 23 | 24 | 25 | 26 | 27 | 28 | 29 | 30 | 31 | Inspector |
|---------------------------------------------------------------------|---|---|---|---|---|---|---|---|---|----|----|----|----|----|----|----|----|----|----|----|----|----|----|----|----|----|----|----|----|----|----|-----------|
| Rancho Dental - Perry Davis | | | | | | | | | | | | | | | | | | | | | | | | | | | | | | | | Jack |
| 29746 Lyndie Ln (& Rancho Cal) | | | | | | | | | | | | | | | | | | | | | | | | | | | | | | | | |
| Commercial Center - | | | | | | | | | | | | | | | | | | | | | | | | | | | | | | | | Jack |
| 29748 Lyndie Ln (& Rancho Cal) | | | | | | | | | | | | | | | | | | | | | | | | | | | | | | | | |
| Single Family - John Donaldson | | | | | | | | | | | | | | | | | | | | | | | | | | | | | | | | |
| 43510 Verde Drive | | | | | | | | | | | | | | | | | | | | | | | | | | | | | | | | |
| Single Family - Teffenhart Construction | | | | | | | | | | | | | | | | | | | | | | | | | | | | | | | | Pat |
| 43520 San Fermin | | | | | | | | | | | | | | | | | | | | | | | | | | | | | | | | |
| Single Family - Brand Construction | | | | | | | | | | | | | | | | | | | | | | | | | | | | | | | | Doug |
| Santiago w/o Margarita (43300 San Fermin) | | | | | | | | | | | | | | | | | | | | | | | | | | | | | | | | |
| Single Family - Kevin McDaniel | | | | | | | | | | | | | | | | | | | | | | | | | | | | | | | | Doug |
| 30425 La Presa Loop (end of culdesac) | | | | | | | | | | | | | | | | | | | | | | | | | | | | | | | | |
| Single Family - Walter Zeppeiri | | | | | | | | | | | | | | | | | | | | | | | | | | | | | | | | Doug |
| 30109 Via Arboleda | | | | | | | | | | | | | | | | | | | | | | | | | | | | | | | | |
| Single Family - John Frazzini | | | | | | | | | | | | | | | | | | | | | | | | | | | | | | | | Pat |
| 41380 La Sierra Road | | | | | | | | | | | | | | | | | | | | | | | | | | | | | | | | |
| Single Family - Refugio Ybarra | | | | | | | | | | | | | | | | | | | | | | | | | | | | | | | | Pat |
| 44044 Mountain View | | | | | | | | | | | | | | | | | | | | | | | | | | | | | | | | |
| Single Family - Nasir Ahmed | | | | | | | | | | | | | | | | | | | | | | | | | | | | | | | | Pat |
| 28915 & 28945 Vallejo Avenue | | | | | | | | | | | | | | | | | | | | | | | | | | | | | | | | |
| Single Family - Craig Pulido | | | | | | | | | | | | | | | | | | | | | | | | | | | | | | | | Pat |
| 30870 Avenida Del Reposo | | | | | | | | | | | | | | | | | | | | | | | | | | | | | | | | |
| Single Family - Kamal Odeh | | | | | | | | | | | | | | | | | | | | | | | | | | | | | | | | Pat |
| 30621 San Pasqual Road | | | | | | | | | | | | | | | | | | | | | | | | | | | | | | | | |
| Single Family - John Tuccinardi | | | | | | | | | | | | | | | | | | | | | | | | | | | | | | | | |
| 31044 Jedediah Smith | | | | | | | | | | | | | | | | | | | | | | | | | | | | | | | | |
| Single Family - Maurice Leon | | | | | | | | | | | | | | | | | | | | | | | | | | | | | | | | |
| 44062 Palma Drive (end of culdesac) | | | | | | | | | | | | | | | | | | | | | | | | | | | | | | | | |
| Single Family - Robert Tuccinardi | | | | | | | | | | | | | | | | | | | | | | | | | | | | | | | | |
| 30711 Jedediah Smith | | | | | | | | | | | | | | | | | | | | | | | | | | | | | | | | |
| Office Building - Robert Rosenstein ** | | | | | | | | | | | | | | | | | | | | | | | | | | | | | | | | Doug |
| 41888 4th Street | | | | | | | | | | | | | | | | | | | | | | | | | | | | | | | | |
| | | | | | | | | | | | | | | | | | | | | | | | | | | | | | | | | |
| | | | | | | | | | | | | | | | | | | | | | | | | | | | | | | | | |
| | | | | | | | | | | | | | | | | | | | | | | | | | | | | | | | | |
| | | | | | | | | | | | | | | | | | | | | | | | | | | | | | | | | |
| | | | | | | | | | | | | | | | | | | | | | | | | | | | | | | | | |

I = Inspected
 N = Inspection Notice Issued
 F = Follow-Up Required
 M/C = Met/Called Responsible Party

CIT = Citation Issued
 WB = SDRWQCB Rep Present
 ** = New Site

APPENDIX H
Industrial and Commercial Facility Inventory

CITY OF TEMECULA COMMERCIAL AND INDUSTRIAL FACILITIES LIST

(As of May 1, 2005)

| FIRM NAME | ADDRESS | SIC NO | BUSINESS TYPE | PRIORITY |
|--------------------------------------|------------------------------------|---------|------------------------------------------|----------|
| Bruce Newman | 42270 Agena St | 2499001 | Wood Products, Not Elsewhere Classified | H |
| V P Italia Tile & Stone | 41790 Winchester Rd #A | 2499099 | Tile, Cork | H |
| Adobe Plaza Cleaners | 27625 Jefferson Ave #100 | 2842016 | Drycleaning Preparations | H |
| Black Knight Termite & Construction | 39433 Colleen Way | 2879001 | Pesticides And Agricultural Chemicals, N | H |
| Cox Pest Control | 31895 Calle Vimianzo | 2879001 | Pesticides And Agricultural Chemicals, N | H |
| Molding International & Eng | 42136 Avenida Alvarado | 3089001 | Plastics Products, Not Elsewhere Classif | H |
| Rebs Enterprises | 31695 Corte Rosario | 3089047 | Flower Pots, Plastics | H |
| Wall Dimensions Inc | 43540 Nantes Court | 3089116 | Wall Coverings, Plastics | H |
| Bianchi International | 27969 Jefferson Ave | 3111001 | Leather Tanning And Finishing | H |
| The Painted Garden | 41946 5th Street | 3312063 | Wrought Pipe And Tubing, Made In Steel W | H |
| Wakefield Eng Inc | 27901 Jefferson Ave | 3341001 | Secondary Smelting And Refining Of Nonfe | H |
| Channell Commercial Corp | 26040 Ynez Rd | 3356001 | Rolling, Drawing, And Extruding Of Nonfe | H |
| Landmark Metalcoat Inc | 42246 Sarah Way | 3479001 | Coating, Engraving, And Allied Services, | H |
| Laegers Inc | 42180 Sarah Way | 3498001 | Fabricated Pipe And Pipe Fittings | H |
| P H E D Corporation | 42389 Winchester Rd #A | 3499027 | Machine Bases, Metal | H |
| International Rectifier / Hexfit | 41915 Business Park Dr | 3674001 | Semiconductors And Related Devices | H |
| Micro Grow Greenhouse Sys Inc | 26111 Ynez Rd #C4 | 3674001 | Semiconductors And Related Devices | H |
| Opto 22 | 43044 Business Park Dr | 3674001 | Semiconductors And Related Devices | H |
| Electro Support Systems Corp | 42136 Sarah Way | 3679001 | Electronic Components, Not Elsewhere Cla | H |
| Procure Components Inc | 42108 Orange Blossom Drive | 3679001 | Electronic Components, Not Elsewhere Cla | H |
| Temecula Marine Center Inc / Collins | 41923 2nd Street | 3732001 | Boat Building And Repairing | H |
| Alaniz Watertrucks | 31942 Poole Ct | 4499001 | Water Transportation Services, Not Elsew | H |
| Ramos Water Truck | 41231 Via Aguila | 4499001 | Water Transportation Services, Not Elsew | H |
| Water Works Water Trucks | 30800 Avenida Buena Suerte | 4499001 | Water Transportation Services, Not Elsew | H |
| Murrieta Valley R V Service Inc | 27882 Del Rio | 5012014 | Recreational Vehicles\Wholesale | H |
| Temecula Valley R V Services Inc | 28897 Front St | 5012014 | Recreational Vehicles\Wholesale | H |
| Auto Zone #5582 | 31837 Hwy 79 #A1 | 5013001 | Motor Vehicle Supplies And New Parts | H |
| Kamikaze Racing | 27498 W Enterprise Cr #2 | 5013001 | Motor Vehicle Supplies And New Parts | H |
| Pure Motorsport | 32005 Corte Cardin | 5013001 | Motor Vehicle Supplies And New Parts | H |
| Quality Tool & Equipment | 42660 Rio Nedo | 5013001 | Motor Vehicle Supplies And New Parts | H |
| R H Company / N Y Tehk Products | 29512 Georgetown Lane | 5013005 | Automotive Accessories\Wholesale | H |
| Rhino Linings Of Riverside Co | 28822 Front Street #202 | 5013005 | Automotive Accessories\Wholesale | H |
| Sector 1 1 1 | 41740 Enterprise Circle North #107 | 5013005 | Automotive Accessories\Wholesale | H |
| Swirli Enterprises | 32130 Corte Soledad | 5013005 | Automotive Accessories\Wholesale | H |
| U S A & Europe Autosale | 42036 Moraga Rd #6 B | 5013005 | Automotive Accessories\Wholesale | H |
| Al's Performance Inc | 28710-A Las Haciendas St #B | 5013007 | Automotive Parts, New \Wholesale | H |
| Auto Zone #5936 | 40345 Winchester Rd | 5013007 | Automotive Parts, New \Wholesale | H |
| Classic Car Concepts | 43071 Business Park Dr | 5013007 | Automotive Parts, New \Wholesale | H |
| Japan Products Of U S A Co Ltd | 26111 Ynez Rd #B 8 | 5013007 | Automotive Parts, New \Wholesale | H |

CITY OF TEMECULA COMMERCIAL AND INDUSTRIAL FACILITIES LIST

(As of May 1, 2005)

| FIRM NAME | ADDRESS | SIC NO | BUSINESS TYPE | PRIORITY |
|-------------------------------------|---------------------------------|---------|-------------------------------------------|----------|
| Mark Shaffer's American Off Road | 27941 Jefferson Ave #C | 5013007 | Automotive Parts, New \Wholesale | H |
| Matt - Imports | 43695 Altamura Ct | 5013007 | Automotive Parts, New \Wholesale | H |
| Mirage U S A / Hot Bodies | 27469 Colt Tourt | 5013007 | Automotive Parts, New \Wholesale | H |
| Old School Flake | 26111 Ynez Rd #B12 | 5013007 | Automotive Parts, New \Wholesale | H |
| Parts Plus Auto Parts / Long Beach | 41860 Enterprise Circle So | 5013007 | Automotive Parts, New \Wholesale | H |
| Rancho Auto Parts | 42011 Avenida Alvarado #A | 5013007 | Automotive Parts, New \Wholesale | H |
| Temecula Speed Center | 28780 Old Town Front St #A3 | 5013007 | Automotive Parts, New \Wholesale | H |
| V A Used Truck And Parts Supply Inc | 26459 Ynez Rd #B | 5013007 | Automotive Parts, New \Wholesale | H |
| Virtual World Parts Inc | 43391 Business Park Drive #C7 | 5013007 | Automotive Parts, New \Wholesale | H |
| Vogtland North America Inc | 43391 Business Park Dr #C6 | 5013007 | Automotive Parts, New \Wholesale | H |
| Epoxy Pros | 29487 Georgetown Lane | 5013012 | Garage Service Equipment\Wholesale | H |
| G I E Trading | 45420 Calle Los Mochis | 5013014 | Motorcycle Parts\Wholesale | H |
| S S M Trading Inc | 42387 Avenida Alvarado #111 | 5013014 | Motorcycle Parts\Wholesale | H |
| Vigilant Sprockets | 28710 Las Haciendas #C | 5013014 | Motorcycle Parts\Wholesale | H |
| Gomez Tire / Jose Adame | 28093 Jefferson Ave | 5014001 | Tires And Tubes | H |
| Mickey Thompson Tires | 43455 Business Park Dr | 5014001 | Tires And Tubes | H |
| Sand Tires Unlimited Inc | 42198 Avenida Alvarado | 5014001 | Tires And Tubes | H |
| Aviation Parts Sales | 28450 Felix Valdez #B | 5088001 | Transportation Equipment And Supplies, E | H |
| M G Aviation | 42409 Winchester Rd | 5088005 | Aircraft Equipment And Supplies\Wholesale | H |
| Eclipse Custom Boats | 28822 Old Town Front St #206 | 5088006 | Boats, Except Pleasure\Wholesale | H |
| Advanced Golf Cars | 32305 Corte Santa Catalina | 5088008 | Golf Carts, Self-Propelled\Wholesale | H |
| Empire Marine / Vetco Inc | 28780 Front St | 5091009 | Boats, Pleasure: Canoes, Motorboats, And | H |
| 19th Hole Golf Cart | 28822 Front Street | 5091015 | Golf Carts, Except Self-Propelled\Wholes | H |
| Temecula Pool Supply | 29700 Rancho Calif Rd G#11 | 5091019 | Pool Equipment And Supplies\Wholesale | H |
| Leslie's Swimming Pool Supplies | 40414 Winchester #D | 5091021 | Swimming Pools And Equipment\Wholesale | H |
| Tomra Pacific Inc / Hwy 79 South | 33292 Hwy 79 South | 5093001 | Scrap And Waste Materials | H |
| Downs Oil Co Inc | 43040 Rancho Way #200 | 5093011 | Oil, Waste\Wholesale | H |
| A G S Services | 43154 Via Dos Picos #F | 5169031 | Metal Polishes\Wholesale | H |
| Temecula Olive Oil Company | 28653 Old Town Front St | 5169034 | Oil Additives\Wholesale | H |
| Carriage Motors Inc | 27420 Ynez Rd | 5511001 | Motor Vehicle Dealers (New And Used) | H |
| Norm Reeves Chrysler Jeep Dodge | 26845 Ynez Rd | 5511001 | Motor Vehicle Dealers (New And Used) | H |
| Norm Reeves Honda | 26755 Ynez Rd | 5511001 | Motor Vehicle Dealers (New And Used) | H |
| Paradise Chevrolet | 26845 Ynez Rd | 5511001 | Motor Vehicle Dealers (New And Used) | H |
| Rancho Ford Lincoln Mercury | 26895 Ynez Rd | 5511001 | Motor Vehicle Dealers (New And Used) | H |
| Schumacher Auto Sales & Leasing | 28733 Via Montezuma | 5511001 | Motor Vehicle Dealers (New And Used) | H |
| Toyota Of Temecula Valley | 26631 Ynez Road | 5511001 | Motor Vehicle Dealers (New And Used) | H |
| Acumen Motors Ltd | 41731 Enterprise Circle So #401 | 5511002 | Automobile Agencies (Dealers)\Retail | H |
| Becky's Used Cars | 32952 Paterno St | 5511002 | Automobile Agencies (Dealers)\Retail | H |
| Budget Auto Sales | 26111 Ynez Rd # B 20 | 5511002 | Automobile Agencies (Dealers)\Retail | H |

CITY OF TEMECULA COMMERCIAL AND INDUSTRIAL FACILITIES LIST

(As of May 1, 2005)

| FIRM NAME | ADDRESS | SIC NO | BUSINESS TYPE | PRIORITY |
|--------------------------------------|------------------------------|---------|------------------------------------------|----------|
| Quality Nissan Of Temecula | 41895 Motor Car Parkway | 5511002 | Automobile Agencies (Dealers)\Retail | H |
| Kia Of Temecula Valley | 27500 Jefferson Ave | 5511003 | Automobiles, New And Used\Retail | H |
| Savings Enterprises | 27895 Diaz Rd #A | 5521001 | Motor Vehicle Dealers (Used Only) | H |
| Julie Deann Paterson | 28693 Old Town Front St | 5521002 | Antique Autos\Retail | H |
| Arco #6305 | 40212 Winchester Rd | 5541001 | Gasoline Service Stations | H |
| Chevron #1838 | 31669 Highway 79 South | 5541001 | Gasoline Service Stations | H |
| Chevron Station | 27560 Jefferson Ave | 5541001 | Gasoline Service Stations | H |
| Chevron Stations Inc #1814 | 28900 Rancho California Rd | 5541001 | Gasoline Service Stations | H |
| Chevron U S A Inc #201596 | 40635 Winchester Rd | 5541001 | Gasoline Service Stations | H |
| Chevron U S A Inc #204029 | 31669 Hwy 79 South | 5541001 | Gasoline Service Stations | H |
| Creekside Texaco Gas Food Mart | 29115 Front St | 5541001 | Gasoline Service Stations | H |
| Mobil O T R #19137 | 33295 Highway 79 South | 5541001 | Gasoline Service Stations | H |
| Mobil Oil Corp #10193 | 44520 Bedford Court | 5541001 | Gasoline Service Stations | H |
| Mobil Oil Corp #10840 | 29500 Rancho California Rd | 5541001 | Gasoline Service Stations | H |
| Shell / Rancho California Shell | 29750 Rancho Calif Rd | 5541001 | Gasoline Service Stations | H |
| Shell / Ynez Shell | 26680 Ynez Rd | 5541001 | Gasoline Service Stations | H |
| Shell Oil Product U S | 29750 Rancho California Rd | 5541001 | Gasoline Service Stations | H |
| Unocal 76 | 28903 Rancho California Rd | 5541001 | Gasoline Service Stations | H |
| Arco / 21st Century Oil - Front Comp | 44987 Old Town Front St | 5541004 | Gasoline And Oil\Retail | H |
| Costco Wholesale #491 | 26610 Ynez Rd | 5541004 | Gasoline And Oil\Retail | H |
| Union 76 / Winchester Fuels Corp | 40720 Winchester Rd | 5541004 | Gasoline And Oil\Retail | H |
| Empire Marine Inc | 28780 Front St #C3- 5 | 5551001 | Boat Dealers | H |
| Norm Reeves Acura | 26705 Ynez Rd | 5599001 | Automotive Dealers, Not Elsewhere Classi | H |
| Norm Reeves Hyundai / Subaru | 26799 Ynez Rd | 5599001 | Automotive Dealers, Not Elsewhere Classi | H |
| Richard Scott La Fleur | 29910 Los Nogales Rd | 5599001 | Automotive Dealers, Not Elsewhere Classi | H |
| Saturn Of Temecula | 27430 Ynez Rd | 5599001 | Automotive Dealers, Not Elsewhere Classi | H |
| Temecula Auto Sales | 28781 Old Town Front St | 5599001 | Automotive Dealers, Not Elsewhere Classi | H |
| At Your Service Exterminators In | 27574 Commerce Center Dr #13 | 7342001 | Disinfecting And Pest Control Services | H |
| Bug Tech Exterminators Inc | 32028 Via Bonilla | 7342001 | Disinfecting And Pest Control Services | H |
| Minnesang Pest Specialists | 27636 Ynez # L 7-101 | 7342001 | Disinfecting And Pest Control Services | H |
| South County Pest Control | 31248 Eona Cr | 7342001 | Disinfecting And Pest Control Services | H |
| Terminix International | 43234 Business Park Dr #101 | 7342001 | Disinfecting And Pest Control Services | H |
| Vineyard Valley Pest Control | P O Box 821 | 7342001 | Disinfecting And Pest Control Services | H |
| Archon Pest Control | 28061 Jefferson Ave #4 | 7342007 | Pest Control In Structures | H |
| Excel Rental Center | 28115 Del Rio Rd #A | 7353001 | Heavy Construction Equipment Rental And | H |
| Neal Brothers Water Trucks | 41515 Yorba Ave | 7353001 | Heavy Construction Equipment Rental And | H |
| Rental Service Corporation U S A | 28377 Felix Valdez Rd | 7353001 | Heavy Construction Equipment Rental And | H |
| S L Moore Company | 42070 Veneto Dr | 7353003 | Construction Equipment, Heavy: Rental An | H |
| Aloha Grading | 40335 Winchester Rd #118 | 7359001 | Equipment Rental And Leasing, Not Elsewh | H |

CITY OF TEMECULA COMMERCIAL AND INDUSTRIAL FACILITIES LIST

(As of May 1, 2005)

| FIRM NAME | ADDRESS | SIC NO | BUSINESS TYPE | PRIORITY |
|---------------------------------------|-------------------------------------|---------|------------------------------------------|----------|
| C J's Party Bounce | 31215 Camino Verde | 7359001 | Equipment Rental And Leasing, Not Elsewh | H |
| Clinton W Waters | 41158 Promenade Chardonnay Hills | 7359001 | Equipment Rental And Leasing, Not Elsewh | H |
| Doctos Choice | 27574 Commerce Center Dr #133 | 7359001 | Equipment Rental And Leasing, Not Elsewh | H |
| Ferguson Equipment Rental | 27108 Quail Creek Ct | 7359001 | Equipment Rental And Leasing, Not Elsewh | H |
| J Co | 28061 Jefferson Ave #7 B | 7359001 | Equipment Rental And Leasing, Not Elsewh | H |
| Minegar Laser Screed Rentals Inc | 27705 Commerce Center | 7359001 | Equipment Rental And Leasing, Not Elsewh | H |
| Oasis Vending | 29651 Amwood Way | 7359001 | Equipment Rental And Leasing, Not Elsewh | H |
| Orange Collision Equipment | 41158 Promenade Chardonnay Hills | 7359001 | Equipment Rental And Leasing, Not Elsewh | H |
| Pacific Micro Rentals Inc | 43135 Blackdeer Loop #A | 7359001 | Equipment Rental And Leasing, Not Elsewh | H |
| Pacific Water Truck Rentals | 39370 Liefer Rd #11 | 7359001 | Equipment Rental And Leasing, Not Elsewh | H |
| Pauley Equipment Of Temecula Inc | 28374 Felix Valdez Rd | 7359001 | Equipment Rental And Leasing, Not Elsewh | H |
| Rebel Rents Inc | 42188 Winchester Rd | 7359001 | Equipment Rental And Leasing, Not Elsewh | H |
| University In Room Safe Service | 29775 Valle Olvera | 7359001 | Equipment Rental And Leasing, Not Elsewh | H |
| Y & T Transport | 41696 Chablis Ct | 7359001 | Equipment Rental And Leasing, Not Elsewh | H |
| Z T I Enterprises | 31965 Avenida Mallari | 7359001 | Equipment Rental And Leasing, Not Elsewh | H |
| Robert Bosch Tool Corp | 42217 Rio Nedo #A-105 | 7359017 | Tool Rental And Leasing | H |
| Autocenter Autobody | 28710-B Las Haciendas #101 | 7532001 | Top, Body, And Upholstery Repair Shops A | H |
| Inland Empire Cycles Custom | 32855 Verona Ct | 7532001 | Top, Body, And Upholstery Repair Shops A | H |
| Maaco Auto Painting & Body Works | 27561 Commerce Center Dr | 7532001 | Top, Body, And Upholstery Repair Shops A | H |
| Pro Auto Collision Inc | 42011 Avenida Alvarado #C,D&E | 7532001 | Top, Body, And Upholstery Repair Shops A | H |
| Rancho Temecula Auto Painting | 28696 Via Montezuma # 103 | 7532001 | Top, Body, And Upholstery Repair Shops A | H |
| Franks Hot Rods Upholstery | 27620 Commerce Center Dr St Bldg Un | 7532001 | Top, Body, And Upholstery Repair Shops A | H |
| Creekside Body Shop | 28671 Calle Cortez #J | 7532003 | Automotive Body Shops | H |
| Liberty Collision Center | 28093 Jefferson Ave | 7532003 | Automotive Body Shops | H |
| Line X Of Temecula Valley | 28069 Diaz Rd # F | 7532003 | Automotive Body Shops | H |
| Nova / Advanced Auto Collision Inc | 27590 Commerce Center Dr | 7532003 | Automotive Body Shops | H |
| Chaya's Auto Color | 43796 Alcoba Dr | 7532005 | Automotive Paint Shops | H |
| Sweetwater Upholstery | 43094 Via Dos Picos #C | 7532011 | Upholstery Repair, Automotive | H |
| Just Smog Test Only Center | 28860 Front St #B 2 | 7533001 | Automotive Exhaust System Repair Shops | H |
| Mufflers West Auto Service Inc | 43119 Via Dos Picos | 7533001 | Automotive Exhaust System Repair Shops | H |
| Ranch Muffler & Truck Accessories Inc | 27499 Commerce Ctr Dr #A,B,C | 7533001 | Automotive Exhaust System Repair Shops | H |
| Temecula Smog | 27620 Commerce Ctr Dr #110 | 7533001 | Automotive Exhaust System Repair Shops | H |
| Best For Less Tires | 28733 Via Montezuma Un A | 7534001 | Tire Retreading And Repair Shops | H |
| Barneys Tire & Wheel Inc | 27584 Commerce Center Dr | 7534005 | Tire Repair Shops | H |
| C S B & Ellison/Big O Tires #628 | 40525 Winchester Rd | 7534005 | Tire Repair Shops | H |
| Thompson's Discount Tire Center Inc | 28007 Jefferson Ave #E | 7534005 | Tire Repair Shops | H |
| Auto Glass Pros/ Agp Inc | 27511 Commerce Center Dr #B | 7536001 | Automotive Glass Replacement Shops | H |
| B & D Windshield Repair | 43591 Tirano Dr | 7536001 | Automotive Glass Replacement Shops | H |
| Faith Auto Glass & Tinting | 28860 Front St # C 6 | 7536001 | Automotive Glass Replacement Shops | H |

CITY OF TEMECULA COMMERCIAL AND INDUSTRIAL FACILITIES LIST

(As of May 1, 2005)

| FIRM NAME | ADDRESS | SIC NO | BUSINESS TYPE | PRIORITY |
|-------------------------------------|-------------------------------|---------|--------------------------------------|----------|
| Lowest Price Auto Glass | 41860 Enterprise Circle So #C | 7536001 | Automotive Glass Replacement Shops | H |
| Dyno Trans Transmission | 43186 Via Dos Picos #A1 | 7537001 | Automotive Transmission Repair Shops | H |
| Temecula Auto Repair & Radiator Inc | 43191 Rancho Way | 7537001 | Automotive Transmission Repair Shops | H |
| Temecula Diesel Auto Truck | 43216 Via Dos Picos #B | 7537001 | Automotive Transmission Repair Shops | H |
| A R M Auto / Devlin | 42011 Avenida Alvarado | 7538001 | General Automotive Repair Shops | H |
| Advanced Automotive | 27860 Del Rio Rd | 7538001 | General Automotive Repair Shops | H |
| Agape Auto Repair Inc | 43216 Via Dos Picos | 7538001 | General Automotive Repair Shops | H |
| Auto Care Experts | 42295 Avenida Alvarado #1 | 7538001 | General Automotive Repair Shops | H |
| Auto Center Automotive | 28700 Las Haciendas #A | 7538001 | General Automotive Repair Shops | H |
| Auto Doctor | 42255 Baldaray Cr | 7538001 | General Automotive Repair Shops | H |
| Automotive Specialties | 41976 Avenida Alvarado | 7538001 | General Automotive Repair Shops | H |
| Cadillac G M Specialist | 28671 Calle Cortez | 7538001 | General Automotive Repair Shops | H |
| Dial Automotive | 43175 Blackdeer Loop | 7538001 | General Automotive Repair Shops | H |
| Fourth Street Automotive | 41935 Fourth Street | 7538001 | General Automotive Repair Shops | H |
| Franz Mercedes Service & Repair | 27585 Commerce Center Dr | 7538001 | General Automotive Repair Shops | H |
| Japanese Auto Specialty Inc | 28730 Via Montezuma #101 | 7538001 | General Automotive Repair Shops | H |
| Liberty Auto Center | 28093 Jefferson St | 7538001 | General Automotive Repair Shops | H |
| Midas Of Temecula Inc | 26677 Ynez Rd | 7538001 | General Automotive Repair Shops | H |
| Old Town Tire & Service | 28700 Old Town Front St | 7538001 | General Automotive Repair Shops | H |
| Osborne Automotive Machine | 27488 Enterprise Cr W #3 | 7538001 | General Automotive Repair Shops | H |
| Precision Alignment & Brake | 27860 Del Rio Rd #B | 7538001 | General Automotive Repair Shops | H |
| Rancho California Auto Collision | 27535 Enterprise Circle West | 7538001 | General Automotive Repair Shops | H |
| Rass Auto Repair | 28671 Calle Cortez | 7538001 | General Automotive Repair Shops | H |
| Rogers Automotive Specialist | 43124 Rancho Wy | 7538001 | General Automotive Repair Shops | H |
| Ronnies Cooling Sys Specialists | 28129 Jefferson Ave | 7538001 | General Automotive Repair Shops | H |
| The Pep Boys #800 | 40605 Winchester Rd | 7538001 | General Automotive Repair Shops | H |
| Toms Foreign Autohouse | 27511 Commerce Center Dr #A2 | 7538001 | General Automotive Repair Shops | H |
| Truck Auto Fleet Services | 28733 Via Montezuma #H & I | 7538001 | General Automotive Repair Shops | H |
| Aamco Of Temecula | 26671 Ynez Rd #A | 7538002 | Automotive Repair Shops, General | H |
| Advantage Automotive / Tomlin | 28696 Via Montezuma #104 | 7538002 | Automotive Repair Shops, General | H |
| All Valley Auto Care | 28730 Via Montezuma #105 | 7538002 | Automotive Repair Shops, General | H |
| Alltrohic Repair | 27636 Ynez Rd #L 7-117 | 7538002 | Automotive Repair Shops, General | H |
| Ask Terry | 28733 Via Montezuma | 7538002 | Automotive Repair Shops, General | H |
| Carter's Car Care | 41070 Via Del Toronjo | 7538002 | Automotive Repair Shops, General | H |
| Consultatech | 28671 Calle Cortez #C | 7538002 | Automotive Repair Shops, General | H |
| Econo Lube N Tune #181 | 27685 Jefferson Ave | 7538002 | Automotive Repair Shops, General | H |
| Elite Automotive & Smog | 27516 Commerce Center Dr # C | 7538002 | Automotive Repair Shops, General | H |
| Georges Certified Auto Repair | 43094 Via Dos Picos #A | 7538002 | Automotive Repair Shops, General | H |
| Integrity Automotive | 28730 Via Montezuma #103 | 7538002 | Automotive Repair Shops, General | H |

CITY OF TEMECULA COMMERCIAL AND INDUSTRIAL FACILITIES LIST

(As of May 1, 2005)

| FIRM NAME | ADDRESS | SIC NO | BUSINESS TYPE | PRIORITY |
|-----------------------------------------|-------------------------------|---------|------------------------------------------|----------|
| Makestar Honda & Acura | 28733 Via Montezuma | 7538002 | Automotive Repair Shops, General | H |
| Mark Sokach Mobile Auto | 40125 Roshani Dr | 7538002 | Automotive Repair Shops, General | H |
| Mike's Family Automotive | 27620 Commerce Center Dr #102 | 7538002 | Automotive Repair Shops, General | H |
| My Tech Inc | 42346 Rio Nedo St #G | 7538002 | Automotive Repair Shops, General | H |
| One Stop Brake Supply | 28700 Las Haciendas #104-105 | 7538002 | Automotive Repair Shops, General | H |
| Quality 1 Auto Service | 42387 Avenida Alvarado #103 | 7538002 | Automotive Repair Shops, General | H |
| Rancho Auto Service & Smog | 27591 Commerce Center Drive | 7538002 | Automotive Repair Shops, General | H |
| Steve's Pro Kool | 41976 Avenida Alvarado #A | 7538002 | Automotive Repair Shops, General | H |
| Superior Auto Repair | 28733 Via Montezuma | 7538002 | Automotive Repair Shops, General | H |
| Affordable Auto & Truck Service | 43271 Via Angeles | 7539001 | Automotive Repair Shops, Not Elsewhere C | H |
| All Day Smog & Tune | 28730 Via Montezuma St #102 | 7539001 | Automotive Repair Shops, Not Elsewhere C | H |
| Dan's Toyota & Lexus | 43175 Sereno Dr | 7539001 | Automotive Repair Shops, Not Elsewhere C | H |
| Diversified Automotive | 43094 Via Dos Picos #D | 7539001 | Automotive Repair Shops, Not Elsewhere C | H |
| Ed's Mobile Repair | 31241 Comotilo Ct | 7539001 | Automotive Repair Shops, Not Elsewhere C | H |
| Express Tire #97 | 29095 Front St | 7539001 | Automotive Repair Shops, Not Elsewhere C | H |
| Golden State Smog & Auto Service Inc | 27860 Del Rio Road #C | 7539001 | Automotive Repair Shops, Not Elsewhere C | H |
| M & M Tire Center | 41670 Winchester Rd #A | 7539001 | Automotive Repair Shops, Not Elsewhere C | H |
| Ramona Tire Inc | 40385 Winchester Rd | 7539001 | Automotive Repair Shops, Not Elsewhere C | H |
| Rancho Smog | 43062 Via Dos Picos #A | 7539001 | Automotive Repair Shops, Not Elsewhere C | H |
| Temecula Radiator & Auto Repair #1 | 43191 Rancho Way | 7539001 | Automotive Repair Shops, Not Elsewhere C | H |
| The Stop Shop | 28671 Calle Cortez #K | 7539001 | Automotive Repair Shops, Not Elsewhere C | H |
| Valley Autowerkes | 28822 Old Town Front St #104 | 7539001 | Automotive Repair Shops, Not Elsewhere C | H |
| Carburetor Exchange | 28860 Front St #C | 7539007 | Carburetor Repair | H |
| J N C Mobile Installations | 32934 Josheroo Ct | 7539008 | Electrical Service, Automotive (Battery | H |
| All Bright At Last - Car Wash | 41941 Moreno Rd | 7542001 | Carwashes | H |
| Classic Auto Detailing | 44733 Bananal | 7542001 | Carwashes | H |
| Diversified Commercial Cleaning Service | 39460 Hilt Rd | 7542001 | Carwashes | H |
| Extreme Auto Wash | 39835 Cantrell Rd | 7542001 | Carwashes | H |
| Eye Candy Auto Detail | 44367 Kingston Dr | 7542001 | Carwashes | H |
| Guillermo Garcia's Mobile | 42200 Margarita Rd #1310 | 7542001 | Carwashes | H |
| Kealii O Kalani's | 40575 Calif Oaks Rd #D2-259 | 7542001 | Carwashes | H |
| Rancho Car Wash | 27378 Jefferson Av | 7542001 | Carwashes | H |
| Superior Shine Mobile Detailing | 44758 Longfellow Ave | 7542001 | Carwashes | H |
| Temecula Car Wash | 29766 Rancho California Rd | 7542001 | Carwashes | H |
| A - 1 Auto | 28696 Via Montezuma #104 | 7549001 | Automotive Services, Except Repair And C | H |
| Hospitality Car Wash & Quick Lube | 40495 Winchester Rd | 7549001 | Automotive Services, Except Repair And C | H |
| Jiffy Lube #1878 | 30690 Rancho California Rd | 7549001 | Automotive Services, Except Repair And C | H |
| Roberts Test Only Smog Check | 28671 Calle Cortez #K | 7549001 | Automotive Services, Except Repair And C | H |
| Shell Rapid Lube | 40915 Winchester Rd | 7549001 | Automotive Services, Except Repair And C | H |

CITY OF TEMECULA COMMERCIAL AND INDUSTRIAL FACILITIES LIST

(As of May 1, 2005)

| FIRM NAME | ADDRESS | SIC NO | BUSINESS TYPE | PRIORITY |
|----------------------------------------|------------------------------------|---------|------------------------------------------|----------|
| Stop N Smog Test Only | 43122 Via Dos Picos #C | 7549001 | Automotive Services, Except Repair And C | H |
| T V S Complete Auto Care Inc | 28822 Front St #107-109 | 7549001 | Automotive Services, Except Repair And C | H |
| Temecula Auto Wrecking & Towing Inc | 41910 C Street | 7549001 | Automotive Services, Except Repair And C | H |
| Temecula Quick Lube | 29764 Rancho Calif Rd | 7549001 | Automotive Services, Except Repair And C | H |
| Town & Country Towing | 42250 Baldaray Cr #B | 7549001 | Automotive Services, Except Repair And C | H |
| Xpress Lube #21 | 40917 Winchester Rd | 7549001 | Automotive Services, Except Repair And C | H |
| Auto Center Towing | 28710 Las Haciendas | 7549010 | Towing Service, Automotive | H |
| United Towing Service Inc | 28093 Jefferson Ave | 7549010 | Towing Service, Automotive | H |
| Advanced Automotive Smog | 42274 Rio Nedo Dr | 7699001 | Repair Shops And Related Services, Not E | H |
| J D Cnc Machine Repair | 33455 Winston Way #B | 7699001 | Repair Shops And Related Services, Not E | H |
| Jose's Tractors | 42387 Avenida Alvarado # 112 | 7699001 | Repair Shops And Related Services, Not E | H |
| M 1 Racing Transaxle | 27598 Commerce Center Drive | 7699001 | Repair Shops And Related Services, Not E | H |
| Temecula Motorcycle Service | 41860 Enterprise Circle South #F | 7699001 | Repair Shops And Related Services, Not E | H |
| Valley Wide Small Engine Services | 34390 Scotella Road | 7699001 | Repair Shops And Related Services, Not E | H |
| Millennium Motorsports | 43084 Rancho Way #C | 7699022 | Engine Repair, Except Automotive | H |
| Empire Farrier Supply | 26111 Ynez Rd #B13 | 7699024 | Farriers (Blacksmith Shops) | H |
| Formby Racing | 40192 Calle Medusa | 7699049 | Motorcycle Repair Service | H |
| Lanik Pumping Service | 28822 Front St #210-B | 7699068 | Septic Tank Cleaning Service | H |
| Custom Masonry Designs | 27575 Aralia Ct | 1741001 | Masonry, Stone Setting, And Other Stone | M |
| Hubinsky Custom Masonry | 31950 Calle Ballentine | 1741001 | Masonry, Stone Setting, And Other Stone | M |
| B H Concrete Bruce Henry | 40640 Calle Madero | 1771001 | Concrete Work | M |
| Glenn A Barfknecht | P O Box 639 | 1771001 | Concrete Work | M |
| Nordees Concrete Company | 42161 Southern Hills | 1771001 | Concrete Work | M |
| Rices Concrete Cutting | 30040 Los Nogales Rd | 1771001 | Concrete Work | M |
| Rossi Concrete Inc | 47423 Rainbow Canyon Rd | 1771001 | Concrete Work | M |
| Sedano Traffic Line Striping | 46670 Sandia Creek Dr | 1771001 | Concrete Work | M |
| T R H / Timothy Ray Hole Concrete Cons | 38970 Yuma Lane | 1771001 | Concrete Work | M |
| Asian Market Temecula Inc | 26459 Ynez Rd #B | 2099001 | Food Preparations, Not Elsewhere Classif | M |
| Tortilleria Temecula | 28780 Front St | 2099001 | Food Preparations, Not Elsewhere Classif | M |
| Cabinet Designs | 42088 Rio Nedo #102 | 2434002 | Cabinets, Wood: To Be Installed | M |
| Lexies II | 40820 Winchester Rd #2460 | 3144006 | Shoes, Women's: Except House Slippers, A | M |
| Shoetique | 40820 Winchester Rd #2170 | 3144006 | Shoes, Women's: Except House Slippers, A | M |
| Blackmore Co L L C | 27840 Del Rio Road #A | 3531001 | Construction Machinery And Equipment | M |
| I Can Dig It! | 30660 Milky Way Dr | 3531007 | Backhoes | M |
| Americrete Inc | 41769 Enterprise Circle North #104 | 3531029 | Distributors (Construction Machinery) | M |
| Insupco Inc | 43379 Business Park Dr #200 | 3531029 | Distributors (Construction Machinery) | M |
| Raul A Moreno Concrete Pumping | 39649 Longridge Dr | 3559010 | Cement Making Machinery | M |
| Air Technologies | 38880 Camino Sierra Rd | 3634002 | Air Purifiers, Portable | M |
| Fresh Air Company | 40820 Winchester Rd | 3634002 | Air Purifiers, Portable | M |

CITY OF TEMECULA COMMERCIAL AND INDUSTRIAL FACILITIES LIST

(As of May 1, 2005)

| FIRM NAME | ADDRESS | SIC NO | BUSINESS TYPE | PRIORITY |
|-------------------------------------|----------------------------------|---------|------------------------------------------|----------|
| Fiber Optic Lighting Associates | 42937 Corte Abanilla | 3648001 | Lighting Equipment, Not Elsewhere Classi | M |
| Light F/X Unlimited | 31440 Congressional Dr | 3648001 | Lighting Equipment, Not Elsewhere Classi | M |
| Vineyard Lighting Co | 43943 Carentan Dr | 3648001 | Lighting Equipment, Not Elsewhere Classi | M |
| Bright Ideas & More | 27620 Commerce Center Dr #H 1011 | 3648005 | Flashlights | M |
| Transducer Techniques Inc | 42480 Rio Nedo | 3829001 | Measuring And Controlling Devices, Not E | M |
| Advanced Cardiovascular / Guidant | 26531 Ynez Rd | 3841001 | Surgical And Medical Instruments And App | M |
| A A Worms Inc | 43062 Via Dos Picos | 3999001 | Manufacturing Industries, Not Elsewhere | M |
| A W S M Inc | 30617 Calle Pina Colada | 3999001 | Manufacturing Industries, Not Elsewhere | M |
| Acrathon Precision Technologies Inc | 26201 Ynez Rd # 102 | 3999001 | Manufacturing Industries, Not Elsewhere | M |
| Advanced Extrusion Concepts | 42309 Winchester Rd Bldg A #B | 3999001 | Manufacturing Industries, Not Elsewhere | M |
| Aligrand Corporation | 44956 Trotsdale Dr | 3999001 | Manufacturing Industries, Not Elsewhere | M |
| Andy's Disc Silencer Inc | 43114 Blackdeer Loop #B | 3999001 | Manufacturing Industries, Not Elsewhere | M |
| Aqua Ultraviolet | 42371 Avenida Alvarado B | 3999001 | Manufacturing Industries, Not Elsewhere | M |
| Bostik Findley Inc | 27460 Bostik Ct | 3999001 | Manufacturing Industries, Not Elsewhere | M |
| Enterprise Manufactured Homes | 28363 Vincent Moraga | 3999001 | Manufacturing Industries, Not Elsewhere | M |
| Erik S Hostetter San & Gravel | 33156 Corte Yala | 3999001 | Manufacturing Industries, Not Elsewhere | M |
| Extrusioneering Inc | 41984 Rio Nedo #300 | 3999001 | Manufacturing Industries, Not Elsewhere | M |
| Flowsolve U S Inc | 27455 Tierra Alta Way | 3999001 | Manufacturing Industries, Not Elsewhere | M |
| Four Slide Engineering Inc | 42585 Rio Nedo | 3999001 | Manufacturing Industries, Not Elsewhere | M |
| Fred Johnson Mechanical | 30030 La Primavera St | 3999001 | Manufacturing Industries, Not Elsewhere | M |
| Generic Manufacturing Corp | 27555 Commerce Center Dr | 3999001 | Manufacturing Industries, Not Elsewhere | M |
| Hybrid Solutions | 32202 Placer Belaire | 3999001 | Manufacturing Industries, Not Elsewhere | M |
| Intense Cycles Inc | 42380 Rio Nedo | 3999001 | Manufacturing Industries, Not Elsewhere | M |
| Kirsten King | 31357 Pahuta St | 3999001 | Manufacturing Industries, Not Elsewhere | M |
| Mil O Matic | 27886 Del Rio Rd | 3999001 | Manufacturing Industries, Not Elsewhere | M |
| N / C Industries | 42147 Roick Drive | 3999001 | Manufacturing Industries, Not Elsewhere | M |
| Nexgen Hardware Solutions | 43656 Buckeye Rd | 3999001 | Manufacturing Industries, Not Elsewhere | M |
| Oreq Corporation | 42306 Remington Ave | 3999001 | Manufacturing Industries, Not Elsewhere | M |
| Precision Powder Coating | 27610 Commerce Center Dr | 3999001 | Manufacturing Industries, Not Elsewhere | M |
| Raw Motorsports | 27610 Commerce Center Dr #101 | 3999001 | Manufacturing Industries, Not Elsewhere | M |
| Ryer Inc | 42625 Rio Ned # B | 3999001 | Manufacturing Industries, Not Elsewhere | M |
| Safety Systems Technology Inc | 43280 Business Park Dr #106 | 3999001 | Manufacturing Industries, Not Elsewhere | M |
| Seville Display Doors | 27495 Diaz Rd | 3999001 | Manufacturing Industries, Not Elsewhere | M |
| Solid State Stamping Inc #2 | 42580 Rio Nedo | 3999001 | Manufacturing Industries, Not Elsewhere | M |
| Southern California Distribution | 27421 Bolandra Ct | 3999001 | Manufacturing Industries, Not Elsewhere | M |
| Stay Laboratories LLC | 29940 Avenida Cima Del Sol | 3999001 | Manufacturing Industries, Not Elsewhere | M |
| Swiech Communication Systems | 32979 Regina Dr | 3999001 | Manufacturing Industries, Not Elsewhere | M |
| The Bookbutton Company | 39255 Grassy Rd | 3999001 | Manufacturing Industries, Not Elsewhere | M |
| The Scotts Company / Temecula | 42375 Remington Ave | 3999001 | Manufacturing Industries, Not Elsewhere | M |

CITY OF TEMECULA COMMERCIAL AND INDUSTRIAL FACILITIES LIST

(As of May 1, 2005)

| FIRM NAME | ADDRESS | SIC NO | BUSINESS TYPE | PRIORITY |
|--------------------------------------|----------------------------|---------|------------------------------------------|----------|
| Unique Precision Industries | 27649 Commerce Center Dr | 3999001 | Manufacturing Industries, Not Elsewhere | M |
| V & T Tooling | 42420 Winchester Rd | 3999001 | Manufacturing Industries, Not Elsewhere | M |
| White Cap Industries Inc | 28065 Diaz Rd | 3999001 | Manufacturing Industries, Not Elsewhere | M |
| Brandel Masonry Supplies | 42368 Rio Nedo | 5032001 | Brick, Stone, And Related Construction M | M |
| Cemex Construction Materials L P | 29065 Front St | 5032001 | Brick, Stone, And Related Construction M | M |
| Dal Tile Corporation | 43169 Via Dos Picos #A | 5032001 | Brick, Stone, And Related Construction M | M |
| Polo Group International | 42309 Winchester Rd #C | 5032014 | Granite Building Stone\Wholesale | M |
| Paint Palace Plus | 43052 Teramo St | 5032021 | Plaster\Wholesale | M |
| Bangkok Chef | 27451 Jefferson Av | 5812001 | Eating Places | M |
| Banzai Japanese | 27533 Jefferson Av | 5812001 | Eating Places | M |
| Black Angus Restaurant | 27735 Ynez Rd | 5812001 | Eating Places | M |
| Burger King #9801 | 30534 Rancho California Rd | 5812001 | Eating Places | M |
| Captains Cabin | 28551 Rancho California Rd | 5812001 | Eating Places | M |
| Carls Jr #1023 | 30660 Rancho California Rd | 5812001 | Eating Places | M |
| Carls Jr #791 | 41195 Winchester Rd | 5812001 | Eating Places | M |
| Carls Jr #818 | 44515 Bedford Ct | 5812001 | Eating Places | M |
| Claim Jumper Restaurant | 29450 Rancho California Rd | 5812001 | Eating Places | M |
| Coco's Bakery Restaurant #6003 | 26495 Ynez Rd | 5812001 | Eating Places | M |
| Culinary Artistry Inc / The Vineyard | 33515 Rancho California Rd | 5812001 | Eating Places | M |
| Dairy Queen At Redhawk | 31845 Hwy 79 C | 5812001 | Eating Places | M |
| Del Taco #395 | 27445 Jefferson Ave | 5812001 | Eating Places | M |
| Dennys Restaurant #1947 | 28915 Rancho California Rd | 5812001 | Eating Places | M |
| Dominos Pizza | 28276 Front St | 5812001 | Eating Places | M |
| El Pollo Loco #3337 | 27375 Jefferson Av | 5812001 | Eating Places | M |
| El Rancho Nuevo | 27465 Jefferson Ave | 5812001 | Eating Places | M |
| Ernie B's Worlds Greatest Hogies | 27542 Jefferson Av Un B1 | 5812001 | Eating Places | M |
| Filippis Pizza Grotto | 27309 Jefferson Ave #110 | 5812001 | Eating Places | M |
| Fujiyama Steak House | 30680 Rancho Calif 601 602 | 5812001 | Eating Places | M |
| Guadalajara Grill Restaurant | 27780 Front St #1 | 5812001 | Eating Places | M |
| In N Out Burger #62 | 27684 Jefferson Av | 5812001 | Eating Places | M |
| Jack In The Box Inc #3364 | 40412 Winchester Rd | 5812001 | Eating Places | M |
| Jack In The Box Inc #48 | 27410 Jefferson Ave | 5812001 | Eating Places | M |
| Little Caesars Pizza / K Mart #3828 | 26471 Ynez Rd | 5812001 | Eating Places | M |
| Little Chung King | 27371 Jefferson Av | 5812001 | Eating Places | M |
| Mad Madelines Grill | 28495 Front St #A | 5812001 | Eating Places | M |
| Mc Donalds | 28100 Front St | 5812001 | Eating Places | M |
| Mc Donalds #18171 | 40465 Winchester Rd | 5812001 | Eating Places | M |
| Mc Donalds #20164 | 31853 State Hwy 79 So | 5812001 | Eating Places | M |
| Mexicana Restaurant | 41125 Winchester Rd | 5812001 | Eating Places | M |

CITY OF TEMECULA COMMERCIAL AND INDUSTRIAL FACILITIES LIST

(As of May 1, 2005)

| FIRM NAME | ADDRESS | SIC NO | BUSINESS TYPE | PRIORITY |
|---------------------------------------|---------------------------------|---------|-----------------------|----------|
| Mexico Chiquito Rest & Cantina | 41841 Moreno Rd | 5812001 | Eating Places | M |
| My Buddies Pizza | 29760 Rancho Calif Rd #110 | 5812001 | Eating Places | M |
| Nihon Restaurant | 27576 Ynez Rd #H15 | 5812001 | Eating Places | M |
| Pat & Oscar's | 29375 Rancho California Rd | 5812001 | Eating Places | M |
| Penfold Farms | 28545 Old Town Front St | 5812001 | Eating Places | M |
| Penfolds Cafe & Bakery | 28250 Old Town Front St | 5812001 | Eating Places | M |
| Peonys Chinese Cuisine | 30520 Rancho Calif Rd #A101-102 | 5812001 | Eating Places | M |
| Prestos Inc | 30590 Rancho Calif Rd #C303 | 5812001 | Eating Places | M |
| R J's Sizzlin Steer Inc | 27645 Jefferson Av #106 | 5812001 | Eating Places | M |
| Richies Real American Diner #103 | 27313 Jefferson Av | 5812001 | Eating Places | M |
| Rosas Cantina | 28636 Old Town Front St #109 | 5812001 | Eating Places | M |
| Sizzler Restaurant | 27717 Jefferson Av | 5812001 | Eating Places | M |
| Stadium Pizza | 27314 Jefferson Ave #1 | 5812001 | Eating Places | M |
| Submarina | 26491 Ynez Rd #T | 5812001 | Eating Places | M |
| Swing Inn Cafe | 28676 Old Town Front St | 5812001 | Eating Places | M |
| Temecula Pizza Company Inc | 44535 Bedford Court #D | 5812001 | Eating Places | M |
| Temecula Taqueria | 41958 5th St | 5812001 | Eating Places | M |
| Texas Lils Mesquite Grill | 28495 Old Town Front St | 5812001 | Eating Places | M |
| The Bank Of Mexican Food | 28645 Old Town Front St | 5812001 | Eating Places | M |
| The Caterers Cafe | 43357 Business Park Dr Un 103 | 5812001 | Eating Places | M |
| The Sweet Bean Of Temecula Inc | 30590 Rancho Calif Rd #302 | 5812001 | Eating Places | M |
| Veras Italian Restaurant | 27326 Jefferson Ave #17 | 5812001 | Eating Places | M |
| Yellow Basket Of Temecula LLC | 40575 Winchester Rd | 5812001 | Eating Places | M |
| Starbucks Coffee #5695 | 40695 Winchester Rd | 5812006 | Cafes | M |
| Dave's Lil' Orbits Donuts II | 40705 Calle Vecina | 5812010 | Coffee Shops | M |
| Madlin's Coffee House | 27625 Jefferson Ave #103 | 5812010 | Coffee Shops | M |
| Olivera's Coffee & Juice Bar | 43049 Margarita Rd #101 | 5812010 | Coffee Shops | M |
| Burger King #13109 | 40520 Winchester Road | 5812019 | Fast Food Restaurants | M |
| Carl's Jr | 40820 Winchester Rd #Fc2 | 5812019 | Fast Food Restaurants | M |
| Dalia's Pizza #8 | 27371 Jefferson Ave #S | 5812019 | Fast Food Restaurants | M |
| El Ranchito Taco Shop | 40335 Winchester Rd #F | 5812019 | Fast Food Restaurants | M |
| Fuzion Java & Juice | 41257 Margarita Rd #B 101 | 5812019 | Fast Food Restaurants | M |
| Jack In The Box Inc #3391 | 32055 Highway 79 S E | 5812019 | Fast Food Restaurants | M |
| Kentucky Fried Chicken-Roach | 41850 Moreno Rd | 5812019 | Fast Food Restaurants | M |
| Mc Donald's / Little Canyon Ranch Inc | Highway 79 South | 5812019 | Fast Food Restaurants | M |
| Panda Express #511 | 40820 Winchester Rd #F C-5 | 5812019 | Fast Food Restaurants | M |
| Phillys Best | 41269 Magarita Rd #104 | 5812019 | Fast Food Restaurants | M |
| Subway Sandwich #30968 | 40315 Winchester Rd #C | 5812019 | Fast Food Restaurants | M |
| Take A Break Service #2 | 41915 Business Park Dr | 5812019 | Fast Food Restaurants | M |

CITY OF TEMECULA COMMERCIAL AND INDUSTRIAL FACILITIES LIST

(As of May 1, 2005)

| FIRM NAME | ADDRESS | SIC NO | BUSINESS TYPE | PRIORITY |
|------------------------------------|------------------------------------|---------|------------------------------|----------|
| Wienerschnitzel Hungry Howies | 29105 Front St | 5812019 | Fast Food Restaurants | M |
| Mercy's Filipino Desserts | 31940 Hwy 79 South #C3 | 5812021 | Food Service, Institutional | M |
| Quizno's Classic Subs #1 | 40705 Winchester Rd #7 | 5812021 | Food Service, Institutional | M |
| 32 Italian Ices | 31685-31845 Highway 79 South | 5812022 | Frozen Custard Stands | M |
| Goeatydog | 35480 Calle Campo | 5812025 | Hot Dog (Frankfurter) Stands | M |
| Mc Dog's & Brats | 41087 Promenade Chardonnay Hills | 5812025 | Hot Dog (Frankfurter) Stands | M |
| Cold Stone Creamery #105 | 40688 Winchester Rd #B | 5812026 | Ice Cream Stands | M |
| Michael's Pizza | 43053 Margarita Rd #B-101 | 5812033 | Pizza Parlors | M |
| My Buddies Pizza #109 | 29760 Rancho Calif Rd #109 | 5812033 | Pizza Parlors | M |
| Papa Johns Pizza | 30590 Rancho Calif Rd #307 | 5812033 | Pizza Parlors | M |
| Red Brick Pizza | 32195 State Highway 79 #B | 5812033 | Pizza Parlors | M |
| Stadium Pizza L L C | 31950 Highway 79 South #B2 | 5812033 | Pizza Parlors | M |
| Raja Enterprises Inc | 28276 Front St | 5812034 | Pizzerias | M |
| 5 & Diner Temecula | 26460 Ynez Rd | 5812036 | Restaurants | M |
| Akamoo's Island Sushi | 29760 Rancho Calif Rd | 5812036 | Restaurants | M |
| Albertos Mexican Food #2 | 31940 Hwy 79 South #C4 | 5812036 | Restaurants | M |
| Aloha Joes | 27495-97 Ynez Road | 5812036 | Restaurants | M |
| Amerikhan Mongolian Grill | 40820 Winchester Rd #1750 | 5812036 | Restaurants | M |
| Anthony's Ristorante | 40335 Winchester Rd | 5812036 | Restaurants | M |
| Applebee's Neighborhood | 32175 Highway 79 South | 5812036 | Restaurants | M |
| Arby's | 27702 Jefferson | 5812036 | Restaurants | M |
| Baily Wine Country Cafe | 27644 Ynez Rd #M11 | 5812036 | Restaurants | M |
| Bayou Kitchen | 27470 Jefferson # A2 | 5812036 | Restaurants | M |
| Bernie's Cafe & Deli / Lang | 27535 Jefferson Ave | 5812036 | Restaurants | M |
| Billy B's Famous Chiliburgers | 27300 A Jefferson Ave | 5812036 | Restaurants | M |
| Burger King #14276 | 32110 Highway 79 South #D | 5812036 | Restaurants | M |
| California Grill | 27345 Jefferson Ave | 5812036 | Restaurants | M |
| California Pizza Kitchen | 40820 Winchester Rd #1000 | 5812036 | Restaurants | M |
| Chilis Grill & Bar #282 Temecula | 27645 Ynez Rd | 5812036 | Restaurants | M |
| China Super Buffet Inc | 27624 Jefferson Ave | 5812036 | Restaurants | M |
| Chuys Mesquite Broiler | 31940 Hwy 79 So #C-1 | 5812036 | Restaurants | M |
| City Walk Restaurant | 27590 Jefferson Ave | 5812036 | Restaurants | M |
| Country Garden Restaurant & Bakery | 29000 Front St | 5812036 | Restaurants | M |
| Daphne's Greek Cafe | 40820 Winchester Rd #1020 | 5812036 | Restaurants | M |
| El Ranchito Taco Shop #2 | 33195 Highway 79 South #G | 5812036 | Restaurants | M |
| El Taconazo | 26491 Ynez Rd | 5812036 | Restaurants | M |
| European Deli & Catering #2 | 28410 Old Town Front St #112-1112a | 5812036 | Restaurants | M |
| Farmer Boys Restaurant | 41700 Winchester Rd | 5812036 | Restaurants | M |
| Fish House Vera Cruz | 26700 Ynez Rd | 5812036 | Restaurants | M |

CITY OF TEMECULA COMMERCIAL AND INDUSTRIAL FACILITIES LIST

(As of May 1, 2005)

| FIRM NAME | ADDRESS | SIC NO | BUSINESS TYPE | PRIORITY |
|---------------------------------------|--------------------------------|---------|---------------|----------|
| Godfather's Pizza | 26479 Ynez Rd | 5812036 | Restaurants | M |
| Gourmet Italia | 27499 Ynez Rd | 5812036 | Restaurants | M |
| Great Panda Oriental Cuisine | 31940 Hwy 79 So #C3 | 5812036 | Restaurants | M |
| Green Burrito #51 | 30680 Rancho Calif Rd | 5812036 | Restaurants | M |
| Hogi Yogi | 27480 Ynez Rd #O-1 | 5812036 | Restaurants | M |
| Hometown Buffet | 40390 Margarita Rd | 5812036 | Restaurants | M |
| International Fast Food | 23317 Jefferson Ave | 5812036 | Restaurants | M |
| Iron Wok China Bistro | 26520 Ynez Rd | 5812036 | Restaurants | M |
| Johnny Carino's | 26478 Ynez Rd | 5812036 | Restaurants | M |
| Julliano's Delicatessen | 43053 Margarita Rd #105 | 5812036 | Restaurants | M |
| Kentucky Fried Chicken-Roach | 42197 Margarita Road | 5812036 | Restaurants | M |
| Killer Foods Inc | 41269 Margarita Rd Bldg G #109 | 5812036 | Restaurants | M |
| La Salsa #126 / La Salsa Inc | 26550 Ynez Rd # A | 5812036 | Restaurants | M |
| Little Ceasars Pizza / Heuver | 29700 Rancho Calif Rd | 5812036 | Restaurants | M |
| Los Amigos Taco Shop | 41925 Motor Cary Parkway | 5812036 | Restaurants | M |
| Love Boat Sushi Bar | 26480 Ynez Rd #3 | 5812036 | Restaurants | M |
| Main Street Substation | 41971 Main St | 5812036 | Restaurants | M |
| Marie Calendars Restaurant | 29363 Rancho California Rd | 5812036 | Restaurants | M |
| Mekong River Restaurant | 41377 Margarita Rd #108 | 5812036 | Restaurants | M |
| Mimi's Cafe | 40825 Winchester Rd | 5812036 | Restaurants | M |
| Misato | 41915 Motor Car Pkwy #D & E | 5812036 | Restaurants | M |
| Nick's Super Burger Mexican Food | 28120 Front St #A 101 | 5812036 | Restaurants | M |
| Nipa Hut Restaurant | 27536 Ynez Rd #F21 | 5812036 | Restaurants | M |
| On The Border Mexican Grill & Cantina | 40868 Winchester Rd | 5812036 | Restaurants | M |
| Original Pancake House | 41377 Margarita Rd #101 | 5812036 | Restaurants | M |
| Original Roadhouse Grill | 26440 Ynez Rd | 5812036 | Restaurants | M |
| Osteria Toscana | 32240 Hwy 79 South | 5812036 | Restaurants | M |
| Outback Steakhouse | 40275 Winchester Rd | 5812036 | Restaurants | M |
| Panda Express #645 | 29530 Rancho California Rd | 5812036 | Restaurants | M |
| Panda Express #834 | 32195 Highway 79 South # C | 5812036 | Restaurants | M |
| Panda Express #956 | 40620 Winchester Rd | 5812036 | Restaurants | M |
| Pho Mai Vietnamese Gourmet | 26487 Ynez Rd #H | 5812036 | Restaurants | M |
| Pick Up Stix Inc | 40315 Winchester Rd #D | 5812036 | Restaurants | M |
| Pick Up Stix Temecula | 32240 Highway 79 South | 5812036 | Restaurants | M |
| Pizza Hut Of Southeast Kansas Inc-1 | 29740 Rancho Calif Rd #A | 5812036 | Restaurants | M |
| Red Brick Pizza | 26550 Ynez Rd #C | 5812036 | Restaurants | M |
| Red Ginger Inc | 40405 Winchester Rd #101 | 5812036 | Restaurants | M |
| Red Robin International Inc | 40820 Winchester Rd #1070 | 5812036 | Restaurants | M |
| Redhawk Pizza Factory | 31725 Hwy 79 South | 5812036 | Restaurants | M |

CITY OF TEMECULA COMMERCIAL AND INDUSTRIAL FACILITIES LIST

(As of May 1, 2005)

| FIRM NAME | ADDRESS | SIC NO | BUSINESS TYPE | PRIORITY |
|------------------------------------------|-----------------------------|---------|------------------------|----------|
| Rhythm & Brews | 41915 Third St | 5812036 | Restaurants | M |
| Richies Real American Diner #104 | 32150 Highway 79 South | 5812036 | Restaurants | M |
| Rocky Cola Cafe / Struhl | 27405 Jefferson Ave | 5812036 | Restaurants | M |
| Romano's Macaroni Grill | 41221 Margarita Rd #A | 5812036 | Restaurants | M |
| Rosa's Cafe & Tortilla Factory | 28134 Jefferson Ave | 5812036 | Restaurants | M |
| Round Table | 274644 Ynez Rd | 5812036 | Restaurants | M |
| Royal Panda Partnership Et Al | 33195 Highway 79 South #E | 5812036 | Restaurants | M |
| Rubio's Fresh Mexican Grill | 27480 Ynez Rd | 5812036 | Restaurants | M |
| Rubio's Fresh Mexican Grill | 32180 Highway 79 South | 5812036 | Restaurants | M |
| Saigon Noodle House | 27523 Jefferson Ave | 5812036 | Restaurants | M |
| Sammy's Woodfired Pizza | 40820 Winchester Rd #1050 | 5812036 | Restaurants | M |
| Scarcellas Italian Grill | 27525 Ynez Rd | 5812036 | Restaurants | M |
| Skewers Thai B B Q | 41125 Winchester Rd #B 9 | 5812036 | Restaurants | M |
| Souplantation | 26420 Ynez Rd | 5812036 | Restaurants | M |
| Sushi Camp | 32240 Highway 79 South #104 | 5812036 | Restaurants | M |
| Sushi Gin | 26489 Ynez Rd #D | 5812036 | Restaurants | M |
| Sushi House | 27725 Jefferson Ave #104 | 5812036 | Restaurants | M |
| T G I Fridays | 40830 Winchester Rd | 5812036 | Restaurants | M |
| Taste Of India | 27715 Jefferson Ave #106 | 5812036 | Restaurants | M |
| Temecula Oggis Pizza & Brewing Co | 41301 Margarita Rd | 5812036 | Restaurants | M |
| Teriyaki Temple | 40820 Winchester Rd | 5812036 | Restaurants | M |
| Texas Loosey's Chili Parlour & Saloon | 27483 Ynez Rd | 5812036 | Restaurants | M |
| Thai Kitchen Restaurant / Petersen | 27520 Ynez Rd #C 1 | 5812036 | Restaurants | M |
| The Grill Room | 41687 Temeku Dr | 5812036 | Restaurants | M |
| Tony Roma's | 27464 Jefferson Ave | 5812036 | Restaurants | M |
| Twinnerys Mexican Cafe | 27470 Commerce Center Dr | 5812036 | Restaurants | M |
| Vince's Spaghetti Express | 28145 Jefferson Ave | 5812036 | Restaurants | M |
| Yokozuna Sushie | 44535 Bedford Court #F | 5812036 | Restaurants | M |
| Albertos Mexican Food #3 | 40720 Winchester Rd | 5812037 | Restaurants, Carry-Out | M |
| Carls Jr #1410 | 33125 Highway 79 | 5812037 | Restaurants, Carry-Out | M |
| Crazy Reb's | 41790 Winchester Rd # F | 5812037 | Restaurants, Carry-Out | M |
| Dragon Express | 29588 Rancho Calif Rd #K 11 | 5812037 | Restaurants, Carry-Out | M |
| Imperial Wok | 41925 Motor Car Pkwy #G | 5812037 | Restaurants, Carry-Out | M |
| Pizza Hut Of Southeast Kansas Inc-2 | 33195 Hwy 79 South #D | 5812037 | Restaurants, Carry-Out | M |
| Costco Wholesale Food Court | 26610 Ynez Rd | 5812038 | Restaurants, Fast Food | M |
| Del Taco #835 / Del Taco Inc | 40375 Winchester Rd | 5812038 | Restaurants, Fast Food | M |
| Friends & Neighbors Cafe | 28326 Front St. | 5812038 | Restaurants, Fast Food | M |
| Hot Dog On A Stick / H D O S Enterprises | 40820 Winchester Rd #F C 4 | 5812038 | Restaurants, Fast Food | M |
| Rancho Grande Mexican Food | 27911 Jefferson St #101 | 5812038 | Restaurants, Fast Food | M |

CITY OF TEMECULA COMMERCIAL AND INDUSTRIAL FACILITIES LIST

(As of May 1, 2005)

| FIRM NAME | ADDRESS | SIC NO | BUSINESS TYPE | PRIORITY |
|-----------------------------------------|-----------------------------|---------|------------------------------------------|----------|
| Siggy's Restaurant | 31970 Highway 79 South | 5812038 | Restaurants, Fast Food | M |
| Subway Sandwich #30066 | 27315 Jefferson Ave #C & D | 5812038 | Restaurants, Fast Food | M |
| Sweet Lumpy's B B Q L L C | 28464 Old Front St # A | 5812038 | Restaurants, Fast Food | M |
| Taco Bell #17984 | 31677 Hwy 79 South | 5812038 | Restaurants, Fast Food | M |
| Taco Bell #19515 | 41005 Winchester Rd | 5812038 | Restaurants, Fast Food | M |
| Take A Break Service #1 | 26531 Ynez Rd | 5812038 | Restaurants, Fast Food | M |
| Wendy's / Coastline Food Service | 27672 Jefferson Ave | 5812038 | Restaurants, Fast Food | M |
| Campini's Italian Deli | 28860 Front St #A1 | 5812039 | Sandwich Bars Or Shops | M |
| Quizno's Classic Subs #2 | 40820 Winchester Rd #F C7 | 5812039 | Sandwich Bars Or Shops | M |
| Beacon Lounge Inc | 27725 Jefferson Ave #1 | 5813001 | Drinking Places (Alcoholic Beverages) | M |
| E Ts Sports Lounge | 27423 Jefferson Av | 5813001 | Drinking Places (Alcoholic Beverages) | M |
| Milano's Liquor | 27911 Jefferson Ave #109 | 5813001 | Drinking Places (Alcoholic Beverages) | M |
| Temecula Stampede | 28721 Old Town Front St | 5813001 | Drinking Places (Alcoholic Beverages) | M |
| Allan Power Clean | 32912 Sotelo Dr | 7217001 | Carpet And Upholstery Cleaning | M |
| American Carpet Cleaners | 45043 Corte Alegria | 7217001 | Carpet And Upholstery Cleaning | M |
| American Carpet Company | 31557 Calle Los Padres | 7217001 | Carpet And Upholstery Cleaning | M |
| C & J Carpet Cleaning | 44539 Tobias Circle | 7217001 | Carpet And Upholstery Cleaning | M |
| Environmental Steam Cleaning | 27577 Commerce Center Dr | 7217001 | Carpet And Upholstery Cleaning | M |
| Hector & Chelly's | 30760 Branford Dr | 7217001 | Carpet And Upholstery Cleaning | M |
| Hilbrands Carpet Care | 30685 Milky Way Dr | 7217001 | Carpet And Upholstery Cleaning | M |
| J C Cleaning | 33158 Via Alvaro | 7217001 | Carpet And Upholstery Cleaning | M |
| Mission Professional Cleaning Systems | 40348 Calle Medusa | 7217001 | Carpet And Upholstery Cleaning | M |
| Peterson's Carpet Care | 44385 Via Barranca | 7217001 | Carpet And Upholstery Cleaning | M |
| Pulido Cleaning & Restoration | 27475 Ynez Rd P M B #427 | 7217001 | Carpet And Upholstery Cleaning | M |
| Qualserv Carpet & Upholstery | 27439 Rosebay Ct | 7217001 | Carpet And Upholstery Cleaning | M |
| Servicemaster Total Restoration | 42346 Rio Nedo #A | 7217001 | Carpet And Upholstery Cleaning | M |
| Steam Superior Carpet Upholstery | 27315 Jefferson Ave # J36 | 7217001 | Carpet And Upholstery Cleaning | M |
| Tallys Carpet / Upholstery Cleaning Inc | 40493 Yardley Ct | 7217001 | Carpet And Upholstery Cleaning | M |
| Victory Chem Dry & Emergency Serv | 42220 Agena St | 7217001 | Carpet And Upholstery Cleaning | M |
| Pro Clean Carpet / Upholstery Cleaning | 27612 Sonora Circle | 7217003 | Carpet Cleaning On Customers' Premises | M |
| Advantage Chem-Dry | 29172 Vallejo Ave | 7217006 | Upholstery Cleaning On Customers' Premis | M |
| Anything Maintenance | 27185 Rainbow Creek Dr | 782001 | Lawn And Garden Services | L |
| Benny's Landscaping | 29673 Avenida De Calzada Dr | 782001 | Lawn And Garden Services | L |
| C F A Landscape & Maintenance | 44781 Corte Nautia | 782001 | Lawn And Garden Services | L |
| C J's Lawn Service | 32218 Corte Carmela | 782001 | Lawn And Garden Services | L |
| Clark's Lawn Service | 41847 Humber Dr | 782001 | Lawn And Garden Services | L |
| Clear Water Landscaping | 32871 Abana Ct | 782001 | Lawn And Garden Services | L |
| Complete Services | 43191 Jamara Ct | 782001 | Lawn And Garden Services | L |
| Creative Landscape & Design | 43656 Altamura Ct | 782001 | Lawn And Garden Services | L |

CITY OF TEMECULA COMMERCIAL AND INDUSTRIAL FACILITIES LIST

(As of May 1, 2005)

| FIRM NAME | ADDRESS | SIC NO | BUSINESS TYPE | PRIORITY |
|----------------------------------------|----------------------------|--------|----------------------------------------|----------|
| Curb Creations | 30220 Del Rey Road | 782001 | Lawn And Garden Services | L |
| Daniel Marshall Landscaping Design | 31150 Camino Del Este | 782001 | Lawn And Garden Services | L |
| Down To Earth Yard Care | 43470 Tylman St | 782001 | Lawn And Garden Services | L |
| E Z Lawn Care & Landscape | 43432 Fassano Ct | 782001 | Lawn And Garden Services | L |
| Evergreen Landscape Maintenance | 29765 Windwood Circle | 782001 | Lawn And Garden Services | L |
| Executive Landscaping | 34355 De Portola Rd | 782001 | Lawn And Garden Services | L |
| Gomez Landscaping | 41230 Via Agila | 782001 | Lawn And Garden Services | L |
| Green Thumb | 30562 Hollyberry Ln | 782001 | Lawn And Garden Services | L |
| Gregorio Vasquez Tello | 31147 Camino Del Este | 782001 | Lawn And Garden Services | L |
| Gregorio's Tree Trimming | 28837 Pujol St #76 | 782001 | Lawn And Garden Services | L |
| Independent Discing / Mowing | 42981 Corte Colucci | 782001 | Lawn And Garden Services | L |
| Jim Lemier Gardening Services | 31976 Corte Montoya | 782001 | Lawn And Garden Services | L |
| Jose Alegria Landscape | 29620 Deal Ct | 782001 | Lawn And Garden Services | L |
| L M Landscaping Service | 39150 Rising Hill Dr | 782001 | Lawn And Garden Services | L |
| Landscape And More | 38575 Calle Segovia | 782001 | Lawn And Garden Services | L |
| M & E Tree Service | 39816 Oak Cliff Dr | 782001 | Lawn And Garden Services | L |
| Mark N Morand My Yard Man | 42257 Camino Romo | 782001 | Lawn And Garden Services | L |
| Martin Sandoval Lawn Maintenance | 42947 Corte Cabello | 782001 | Lawn And Garden Services | L |
| Mesek Landscape Service | 40352 Chantemar Way | 782001 | Lawn And Garden Services | L |
| Morales Maintenance | 42080 Cosmic Dr | 782001 | Lawn And Garden Services | L |
| Moreno Garden Landscape | 42767 Twilight Ct | 782001 | Lawn And Garden Services | L |
| Rafael Romero Z | 31203 Camino Del Este | 782001 | Lawn And Garden Services | L |
| Rosendo Martinez Landscape Maintenance | 28801 Pujol St #18 | 782001 | Lawn And Garden Services | L |
| S & S Landscaping | 27632 Parkside Dr | 782001 | Lawn And Garden Services | L |
| Shepards Gardening Services | 29820 Avenida Cima Del Sol | 782001 | Lawn And Garden Services | L |
| Sprinkler Scape | 31877 Calle Redondela | 782001 | Lawn And Garden Services | L |
| Temecula Lawn Care | P O Box 890582 | 782001 | Lawn And Garden Services | L |
| Temecula Plantscape | 41333 Salt River Ct | 782001 | Lawn And Garden Services | L |
| U - K Landscape | 30612 E Loma Linda | 782001 | Lawn And Garden Services | L |
| Victor Sanchez Landscaping | 39617 Long Ridge Dr | 782001 | Lawn And Garden Services | L |
| Jose Gubel Lopez Arreola | 42200 Moraga Road # 21 C | 782004 | Garden Maintenance | L |
| Rafael Romero Torres | 41656 Zinfandel Ave | 782004 | Garden Maintenance | L |
| Curb Scape Creations | 44858 Corte Sevrina | 782006 | Lawn Care | L |
| Discount Lawn Care | 31952 Calle Espinoza | 782006 | Lawn Care | L |
| A & M Professional Landscape | 39535 Spanish Oaks Dr | 782008 | Lawn Mowing Services | L |
| D & S Lawn Aeration & Maintenance | 32497 Galatina St | 782008 | Lawn Mowing Services | L |
| Redhawk Gardening | 45632 Corte Montril | 782008 | Lawn Mowing Services | L |
| Rolling Knolls Landscaping | 46525 De Portola Rd | 782008 | Lawn Mowing Services | L |
| Jose Solano | 44820 Calle Banuelos | 783005 | Tree Trimming For Public Utility Lines | L |

CITY OF TEMECULA COMMERCIAL AND INDUSTRIAL FACILITIES LIST

(As of May 1, 2005)

| FIRM NAME | ADDRESS | SIC NO | BUSINESS TYPE | PRIORITY |
|----------------------------------------|-----------------------------|---------|------------------------------------------|----------|
| Juice Bar | 27520 Ynez Rd #D1 | 2033014 | Juices, Fresh: Fruit Or Vegetable | L |
| Surf City Squeeze | 40820 Winchester Road #K1 | 2033014 | Juices, Fresh: Fruit Or Vegetable | L |
| Downs Commercial Fueling Inc | 27985 Diaz Rd | 5172013 | Petroleum Brokers\Wholesale | L |
| Blyth Homescents Intl / Admin Office | 27455 Tierra Alta Way #B | 5193001 | Flowers, Nursery Stock, And Florists' Su | L |
| Deans Wholesale Flowers | 28373 Felix Valdez Rd Un A3 | 5193001 | Flowers, Nursery Stock, And Florists' Su | L |
| Noltre Nursery Services | 43531 Calle Carabana | 5193001 | Flowers, Nursery Stock, And Florists' Su | L |
| North County Greenhouse | 39611 Liefer Rd | 5193001 | Flowers, Nursery Stock, And Florists' Su | L |
| Summer Rose | 28248 Tierra Vista Rd | 5193001 | Flowers, Nursery Stock, And Florists' Su | L |
| A S Y Trading Inc | 43623 Altamura Ct | 5193003 | Flowers And Florists' Supplies\Wholesale | L |
| Box Enterprises Inc | 33347 Elizabeth Rd | 5193005 | Flowers, Fresh\Wholesale | L |
| Wine Country Flower Farm | 36580 Rancho Calif Rd | 5193007 | Plants, Potted\Wholesale | L |
| L & M Fertilizer Inc | 28690 Las Haciendas St | 5261001 | Retail Nurseries, Lawn And Garden Supply | L |
| Baco's Garden | 42200 Moraga Rd #35-H | 5261003 | Garden Supplies And Tools\Retail | L |
| Hydroponics - 4 - Less | 41669 Winchester Rd #104 | 5261003 | Garden Supplies And Tools\Retail | L |
| The Painted Garden I | 28659 Old Town Front | 5261003 | Garden Supplies And Tools\Retail | L |
| Uniquely Yours / Bellisimo | 32112 Camino Rabago | 5261003 | Garden Supplies And Tools\Retail | L |
| Temecula Garden & Power | 28860 Front St #C3 | 5261004 | Lawnmowers\Retail | L |
| Get Palms | 31900 Calle Chapos | 5261005 | Nursery Stock, Seeds And Bulbs\Retail | L |
| T & R Nursery | 36298 Glenn Oaks Rd | 5261005 | Nursery Stock, Seeds And Bulbs\Retail | L |
| Morgans Pool Service | 45342 Maguey Ct | 7389001 | Business Services, Not Elsewhere Classif | L |
| Professional Pool Service | 31668 Pio Pico Rd | 7389001 | Business Services, Not Elsewhere Classif | L |
| Complete Embroidery Designs | 43154 Via Dos Picos # D | 7389038 | Embroidering Of Advertising On Shirts, E | L |
| Emblematik Inc | 42143 Avenida Alvarado #C2 | 7389038 | Embroidering Of Advertising On Shirts, E | L |
| Showtime Stitched Apparel | 32025 Camino Herencia | 7389038 | Embroidering Of Advertising On Shirts, E | L |
| Stitch Guys | 43143 Bassano Dr | 7389038 | Embroidering Of Advertising On Shirts, E | L |
| All Safe Fire Extinguisher Co | 30130 Del Rey Road | 7389043 | Fire Extinguishers, Service Of | L |
| Temecula Valley Fire Equipment Company | 26111 Ynez Rd #B19 | 7389043 | Fire Extinguishers, Service Of | L |
| A Better Pool Service & Repair | 43091 Camino Caruna | 7389114 | Swimming Pool Cleaning And Maintenance | L |
| All About The Customer Pool Service | P O Box 891961 | 7389114 | Swimming Pool Cleaning And Maintenance | L |
| All American Pool And Spa Service | 45346 Callesito Burgas | 7389114 | Swimming Pool Cleaning And Maintenance | L |
| Chris' Pool Care | 29760 Pasada Rd | 7389114 | Swimming Pool Cleaning And Maintenance | L |
| Danny's Pool Service | 45758 Corte Rodrigo | 7389114 | Swimming Pool Cleaning And Maintenance | L |
| David Molstre Pool Service | 44083 Quiet Meadow Rd | 7389114 | Swimming Pool Cleaning And Maintenance | L |
| Dive In Pool Service Inc | 44660 Thatcher Court | 7389114 | Swimming Pool Cleaning And Maintenance | L |
| Freedom Pool Service Inc | 32548 Angelo Dr | 7389114 | Swimming Pool Cleaning And Maintenance | L |
| Hurricane Pools & Spas | 42815 Twilight Court | 7389114 | Swimming Pool Cleaning And Maintenance | L |
| John-Paul A Hannum P P S I I | 31665 Calle Cataldo | 7389114 | Swimming Pool Cleaning And Maintenance | L |
| Johns Pool Repair | 30025 Calle Halcon | 7389114 | Swimming Pool Cleaning And Maintenance | L |
| K G Pool Service | 42200 Margarita Rd #1324 | 7389114 | Swimming Pool Cleaning And Maintenance | L |

CITY OF TEMECULA COMMERCIAL AND INDUSTRIAL FACILITIES LIST

(As of May 1, 2005)

| FIRM NAME | ADDRESS | SIC NO | BUSINESS TYPE | PRIORITY |
|----------------------------------------|----------------------------|---------|----------------------------------------|----------|
| Miles Pool Service | 29605 Solana Way #5t 3 | 7389114 | Swimming Pool Cleaning And Maintenance | L |
| Peterson Pool & Spa | 31715 Corte Rosario | 7389114 | Swimming Pool Cleaning And Maintenance | L |
| Poseidon Pool Service | 29500 Mira Loma Dr # H 202 | 7389114 | Swimming Pool Cleaning And Maintenance | L |
| Rancho Pool & Spa | 30308 Santa Cecilia Dr | 7389114 | Swimming Pool Cleaning And Maintenance | L |
| Rincon Pools | 39950 Hudson Ct | 7389114 | Swimming Pool Cleaning And Maintenance | L |
| Scrubs Pool Service | 33238 Calle Langarica | 7389114 | Swimming Pool Cleaning And Maintenance | L |
| Snyder Maintenance | 40555 La Colina | 7389114 | Swimming Pool Cleaning And Maintenance | L |
| Spa Doctor | 40294 Calle Torcida | 7389114 | Swimming Pool Cleaning And Maintenance | L |
| Sunrise Pool Service | 27498 Lark Ct | 7389114 | Swimming Pool Cleaning And Maintenance | L |
| Temecula Valley Pool Service / Jackson | 44858 Corte Sevrina | 7389114 | Swimming Pool Cleaning And Maintenance | L |
| Wes Adams | 42121 Orange Blossom Dr | 7389114 | Swimming Pool Cleaning And Maintenance | L |
| Temeku Hills Golf Club LLC | 41687 Temeku Dr | 7992001 | Public Golf Courses | L |
| American Rider Inc | 32831 Highway 79 So # A | 7999058 | Motorcycle Rental | L |