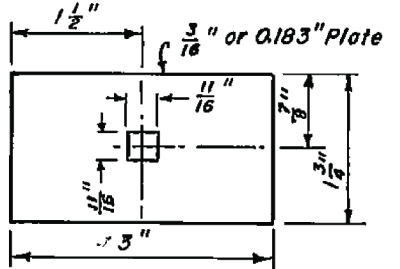
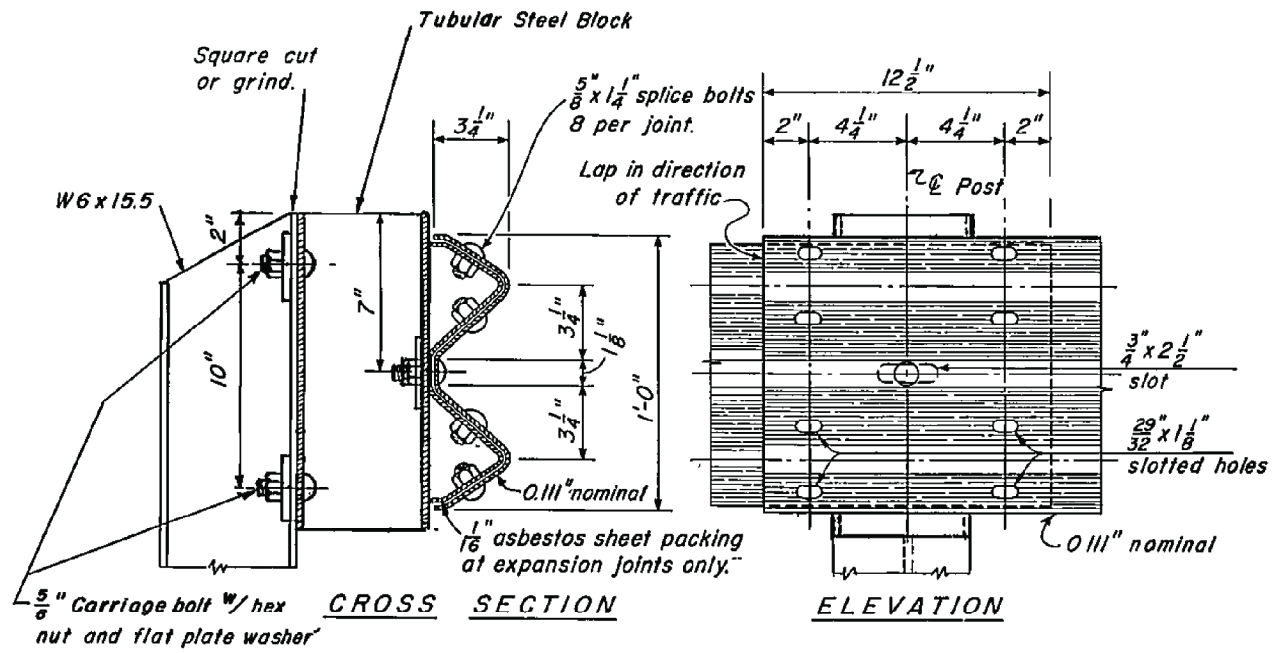


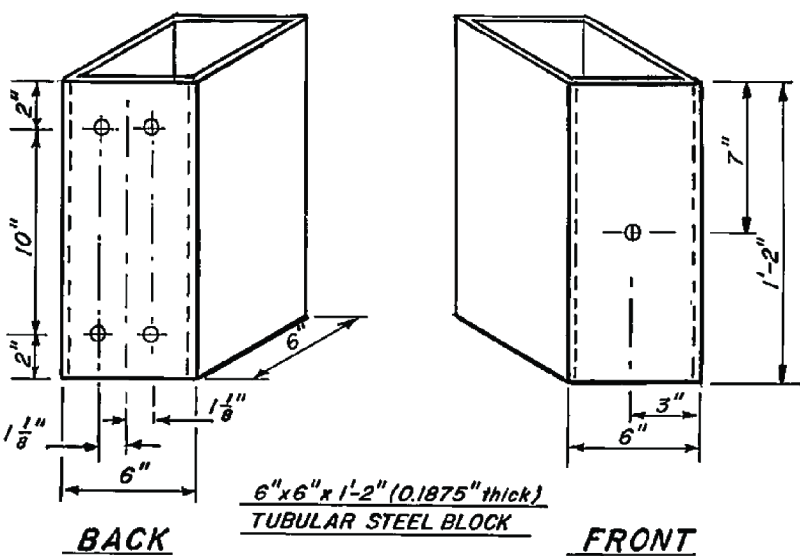
END POST ON SHOULDER



FLAT PLATE WASHER



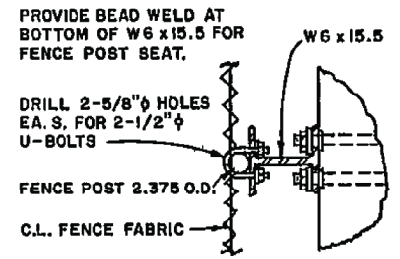
RAIL SPLICE



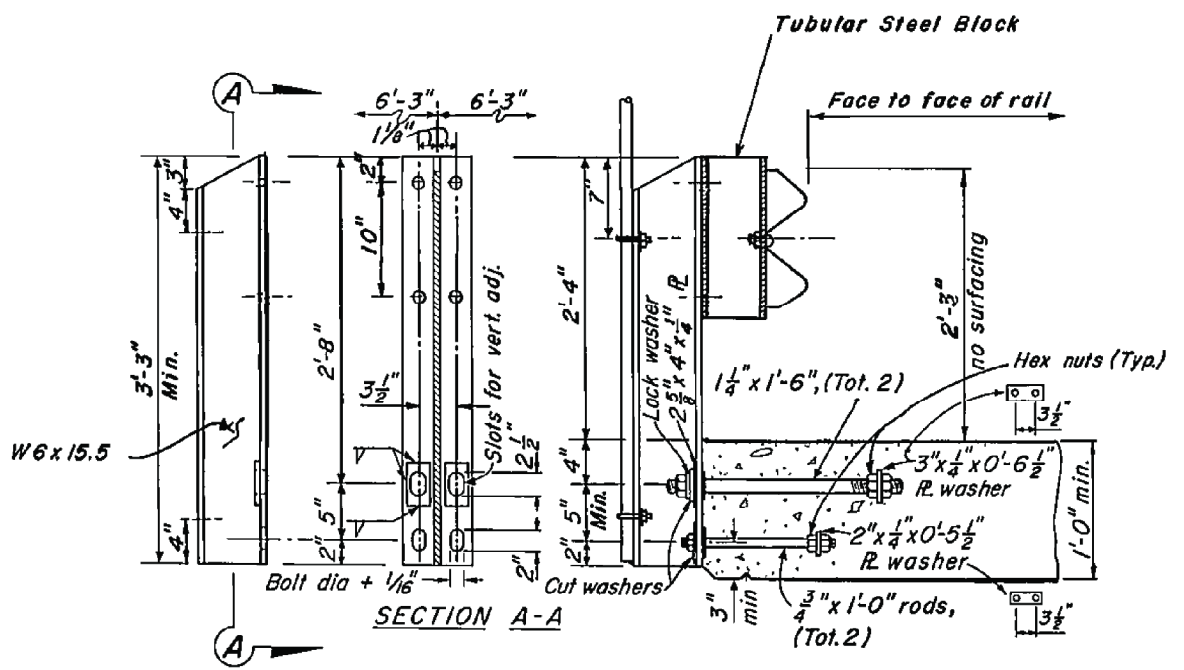
TUBULAR STEEL BLOCK

Notes:

At rail splice nearest expansion joint in bridge deck, slot holes in movable section of rail to allow same amount of movement as is provided in bridge deck. Place 1/16" asbestos sheet packing between rail elements. Adjust bolts to provide sliding fit and set threads.
All holes in posts and blocks shall be 13/16" φ max.
Provide lock washers for top anchor rods. Weld 2 5/8 x 4 x 1/4 plates on W posts for the 1/4" anchor rods. Contractor to provide metal shims to align posts. Space posts to clear expansion joints by 1'-0" min. to E post. All material to be galvanized after fabrication. Bend rods if necessary to maintain minimum clearance on superelevated slabs.



FENCE POST ATTACHMENT TO W6 x 15.5 BEAM



POST FOR THIN SLABS



RIVERSIDE COUNTY FLOOD CONTROL AND WATER CONSERVATION DISTRICT
APPROVED BY: *Warren D. Willard*
CHIEF ENGINEER
DATE: Dec. 18, 2003 R.C.E. NO. 32336

METAL BEAM BRIDGE RAILING
STANDARD DRAWING NUMBER M822