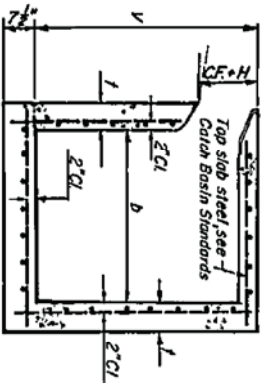


W	V(H)	1	FRONT WALL STEEL	REAR WALL STEEL	END WALL STEEL
From (incl)	To (incl)	Hor.	Vert.	Each Way	
C/B	From (incl)	Hor.	Vert.	Each Way	
10'7"	4	6	#3 @ 6"	#3 @ 6"	#3 @ 6"
10'7"	4	8	#4 @ 12"	#4 @ 12"	#4 @ 12"
10'7"	8	12	#4 @ 10"	#4 @ 10"	#4 @ 10"
14'	4	6	#3 @ 6"	#3 @ 6"	#3 @ 6"
14'	4	8	#4 @ 12"	#4 @ 12"	#4 @ 12"
14'	8	10	#4 @ 8"	#4 @ 12"	#4 @ 10"
14'	10	12	#4 @ 6"	#4 @ 12"	#4 @ 10"



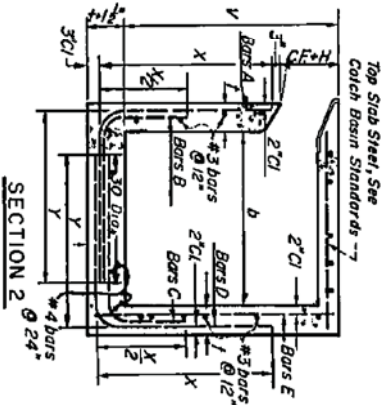
- NOTES**
1. Wall & floor reinforcing shown hereon shall be used with Catch Basin Standard Drawings.
 2. Reinforcing steel shown hereon shall be used in all Catch Basins on State Highways regardless of basin length or depth.
 3. Provide wall & floor steel reinforcing when the following V depths are equalled- or exceeded.

Basin length = W	Basin depth = V
To 7.0'	10'
7' To 14.0'	7'
14' To 21.0'	6'
Over 21.0'	All Depths

WALL AND FLOOR STEEL

CATCH BASIN REINFORCEMENT - "W" 10' 14' (incl)

V(H)	1	FRONT WALL STEEL	REAR WALL STEEL	END WALL STEEL
From (incl)	To (incl)	Bars A B B	Bars C D Bars E	Hor & Vert
4	6	#3 @ 24"	#3 @ 12"	#4 @ 24" #3 @ 18"
4	5	#3 @ 20"	#3 @ 12"	#4 @ 24" #3 @ 14"
4	5	#3 @ 20"	#3 @ 12"	#4 @ 24" #3 @ 14"
5	6	#3 @ 12"	#3 @ 12"	#4 @ 24" #3 @ 14"
6	7	#3 @ 17"	#3 @ 8 1/2"	#4 @ 24" #3 @ 14"
7	8	#4 @ 13"	#3 @ 6 1/2"	#4 @ 24" #3 @ 14"
8	9	#4 @ 15"	#3 @ 7"	#4 @ 20" #3 @ 11"
9	10	#4 @ 12"	#4 @ 12"	#4 @ 20" #3 @ 11"
10	11	#5 @ 15"	#4 @ 11" #4 @ 18"	#3 @ 11"
11	12	#6 @ 18"	#4 @ 9" #4 @ 13"	#3 @ 11"
11	12	#6 @ 18"	#4 @ 9" #4 @ 13"	#3 @ 11"
				$X = (V+1) - (CF+H+4)'$
				$Y = (\frac{W+2}{2}) + 15 \text{ dia} - 2"$



Reinforcing steel shown hereon shall be used in all catch basins when excavation or soil conditions require both sides of the walls to be formed regardless of basin length or depth.

WALL AND FLOOR STEEL

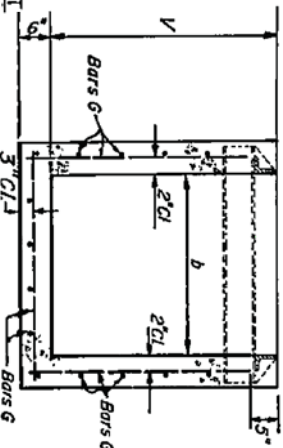
CATCH BASIN REINFORCEMENT - "W" GREATER THAN 14'



FLOOR REINFORCEMENT SECTION 2

V(H)	1	SIDE & END WALL STEEL BARS G
From (incl)	To (incl)	Bars G
4	6	#3 @ 6"
4	8	#4 @ 6"
8	12	#5 @ 6"

GRATING BASIN REINFORCEMENT



RIVERSIDE COUNTY FLOOD CONTROL
AND
WATER CONSERVATION DISTRICT

APPROVED BY: *Warren D. Williams*
CHIEF ENGINEER

DATE: April 5, 2004

CATCH BASIN REINFORCEMENT
STANDARD DRAWING NUMBER CB106