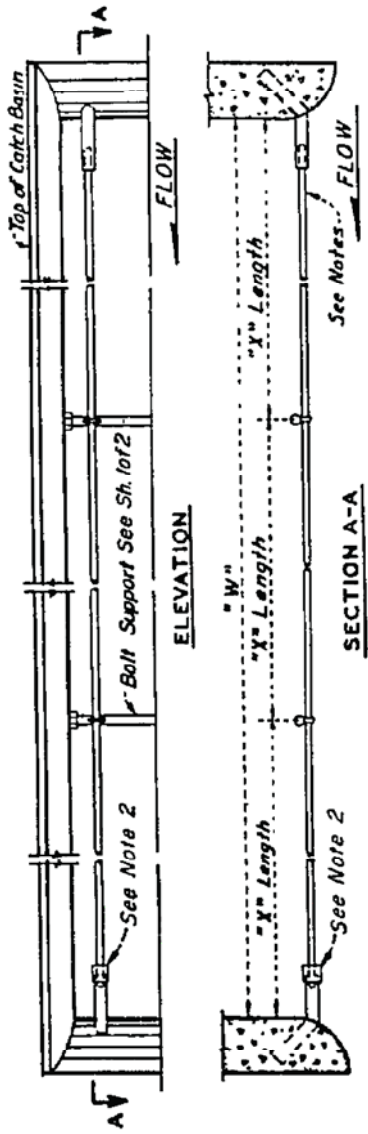
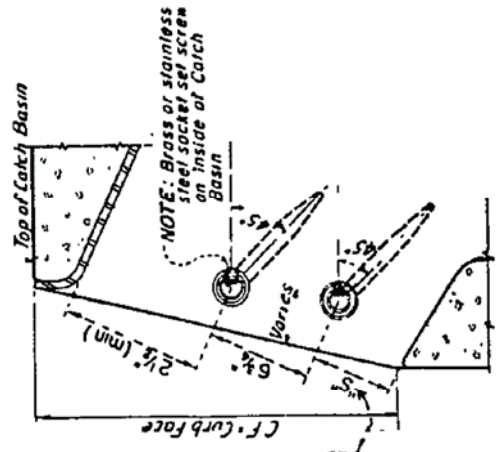


DETAIL OF ANCHOR



SECTION SHOWING LOCATION OF ANCHOR AT WALL OF CATCH BASIN



"W" (incl)	NUMBER OF SUPPORT BOLTS	NUMBER OF "X" LENGTHS
5' to 10'	1	2
10' to 15'	2	3
15' to 20'	3	4
20' to 25'	4	5
25' to 30'	5	6

NOTES:

- All bars shall be 3/4" Galv, hot-rolled steel per A.S.T.M Designation A-36. Bar lengths shall not exceed 21', and shall be cut to fit in field. When W is over 21', protection bar shall consist of two or more sections depending upon length of basin. Location of special support bars and additional socket set screw shall be determined by the Engineer in the field.
- Install coupling at downstream end of catch basin opening.



RIVERSIDE COUNTY FLOOD CONTROL AND WATER CONSERVATION DISTRICT

APPROVED BY: *Warren D. Williams*

CHIEF ENGINEER

DATE: April 5, 2004

R.C.E. No. 32336