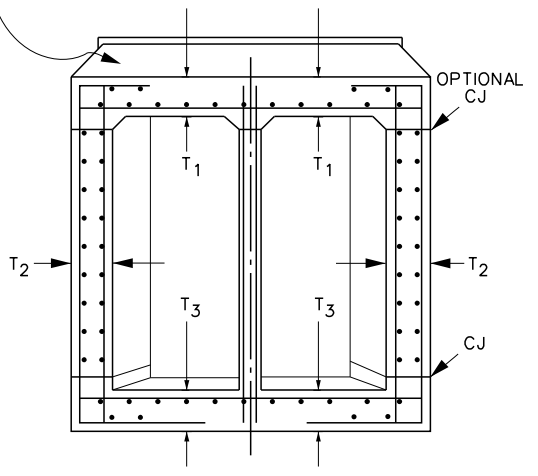
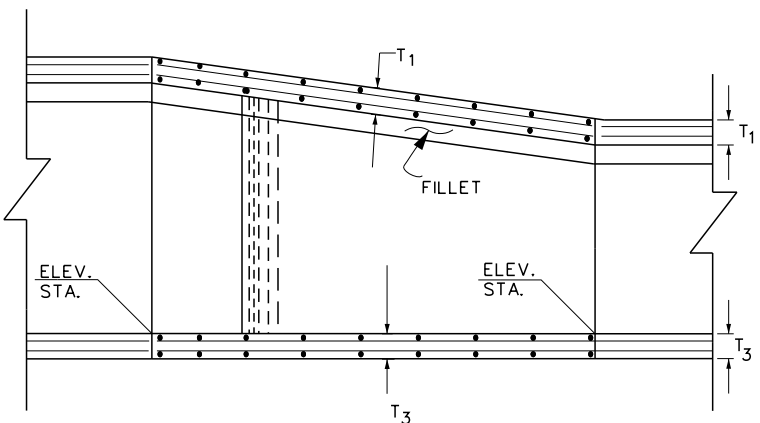


PLAN

STEEL PATTERN SHOWN PICTORIALLY ONLY
SEE PROJECT DRAWINGS FOR ACTUAL
STEEL LAYOUT.



SECTION B



SECTION A

NOTES

1. THE HORIZONTAL ANGLE OF DIVERGENCE OR CONVERGENCE, θ , SHALL NOT EXCEED $5^\circ 45'$.
2. THE REINFORCING STEEL BAR SIZES, SPACING AND OUTSIDE COVER SHALL BE THAT OF DOUBLE BOX SECTION. FOR CURVED TRANSITIONS, SPACE BAR ON CENTER LINE & PLACE TRANSVERSE STEEL RADIALLY. THE BAR LENGTHS & DIMENSIONS SHALL VARY UNIFORMLY THROUGH OUT TRANSITION. LONGITUDINAL BARS SHALL BE CONTINUED THROUGH THE JOINTS WITH THE TRANSITION STRUCTURE.
3. THE CONCRETE THICKNESS SHALL BE THAT OF THE DOUBLE BOX SECTION.
4. STRUCTURAL CONCRETE SHALL BE CLASS "A".

RIVERSIDE COUNTY FLOOD CONTROL AND WATER CONSERVATION DISTRICT		TRANSITION STRUCTURE NO. 4
RECOMMENDED FOR APPROVAL BY: CHIEF, DESIGN & CONSTRUCTION DATE: JANUARY 2011	APPROVED BY: CHIEF ENGINEER DATE: JANUARY 2011	
R.E. No. 44684	DATE: JANUARY 2011	R.C.E. NO. 32336
STANDARD DRAWING NUMBER TS304		