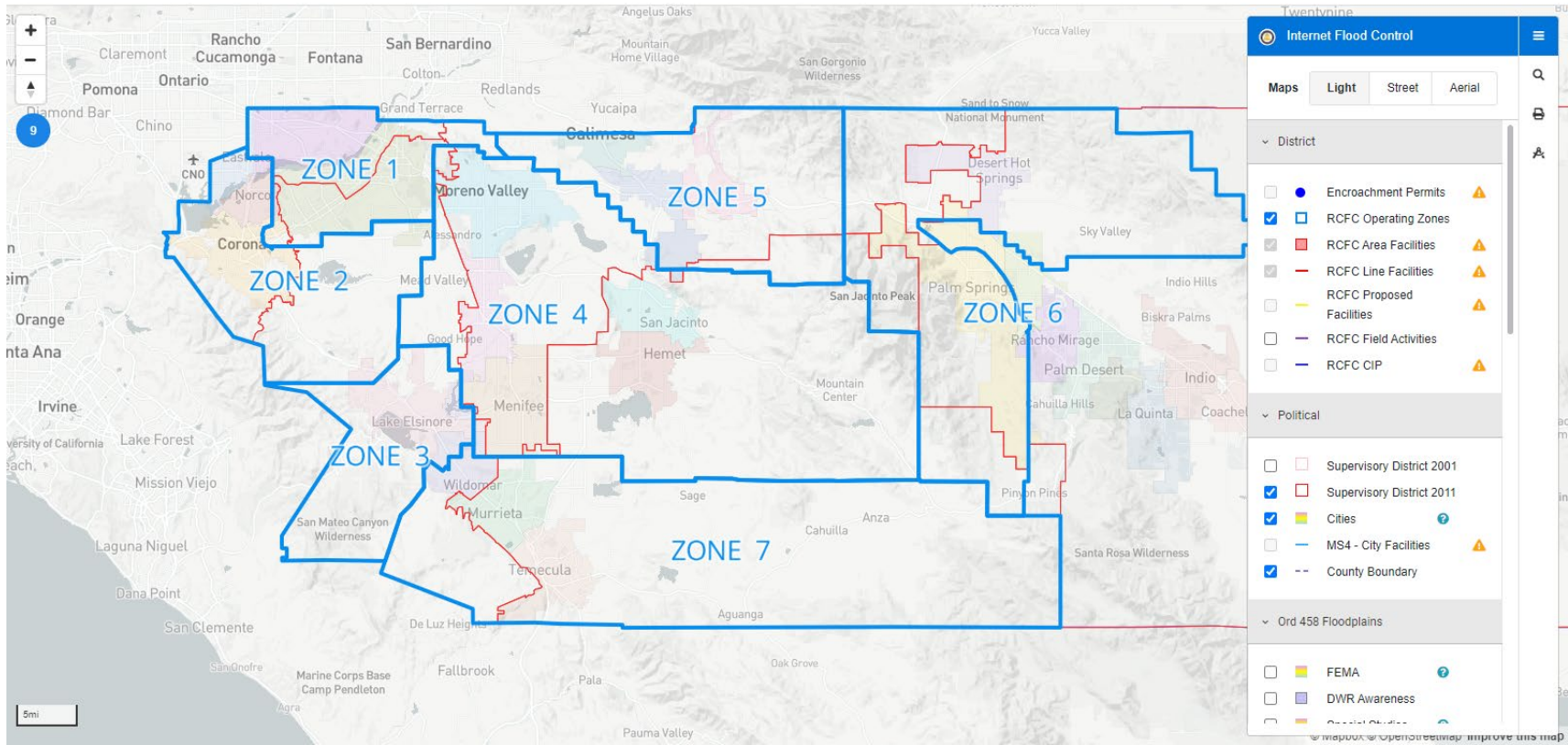
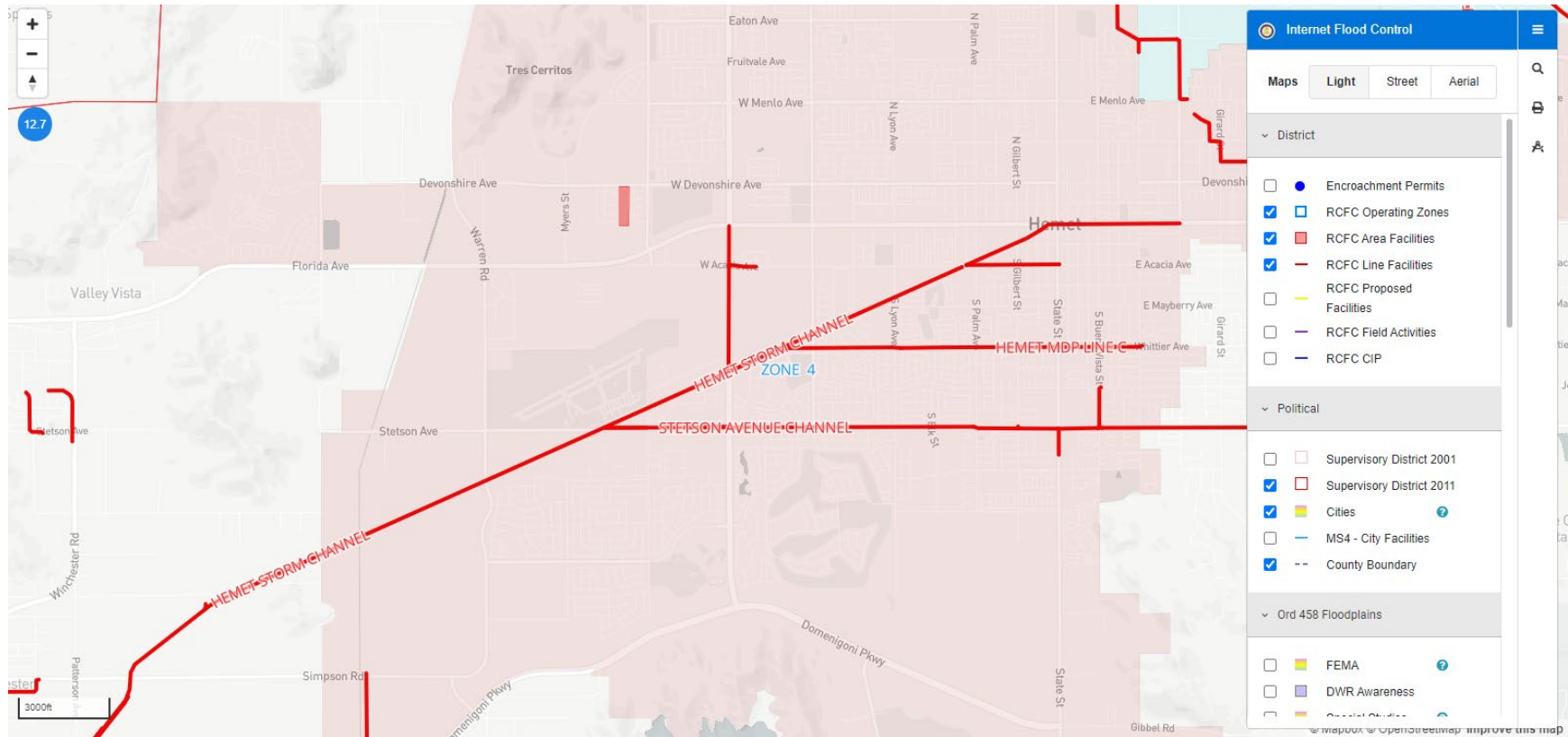


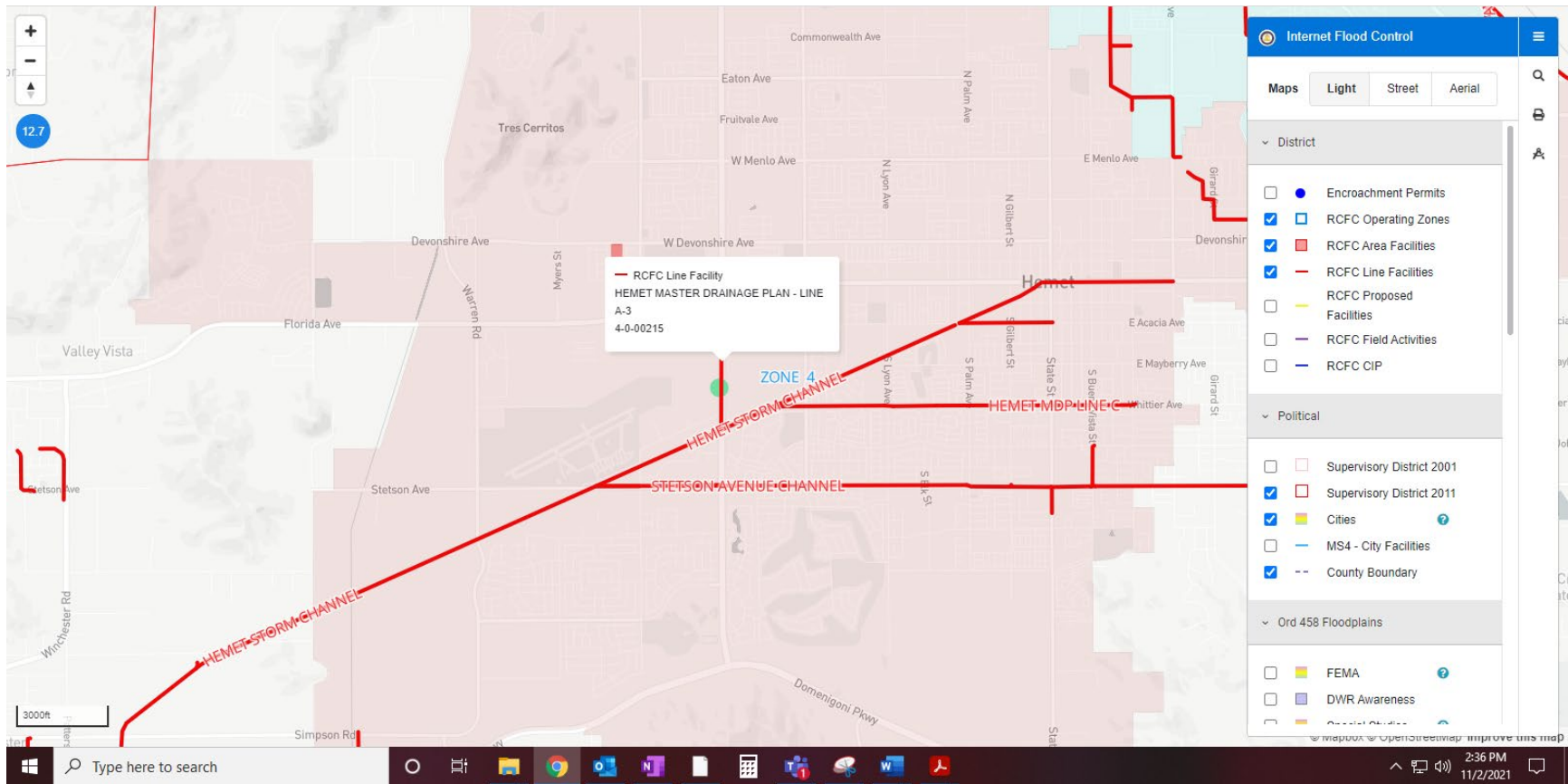
1. Open GIS Webmap

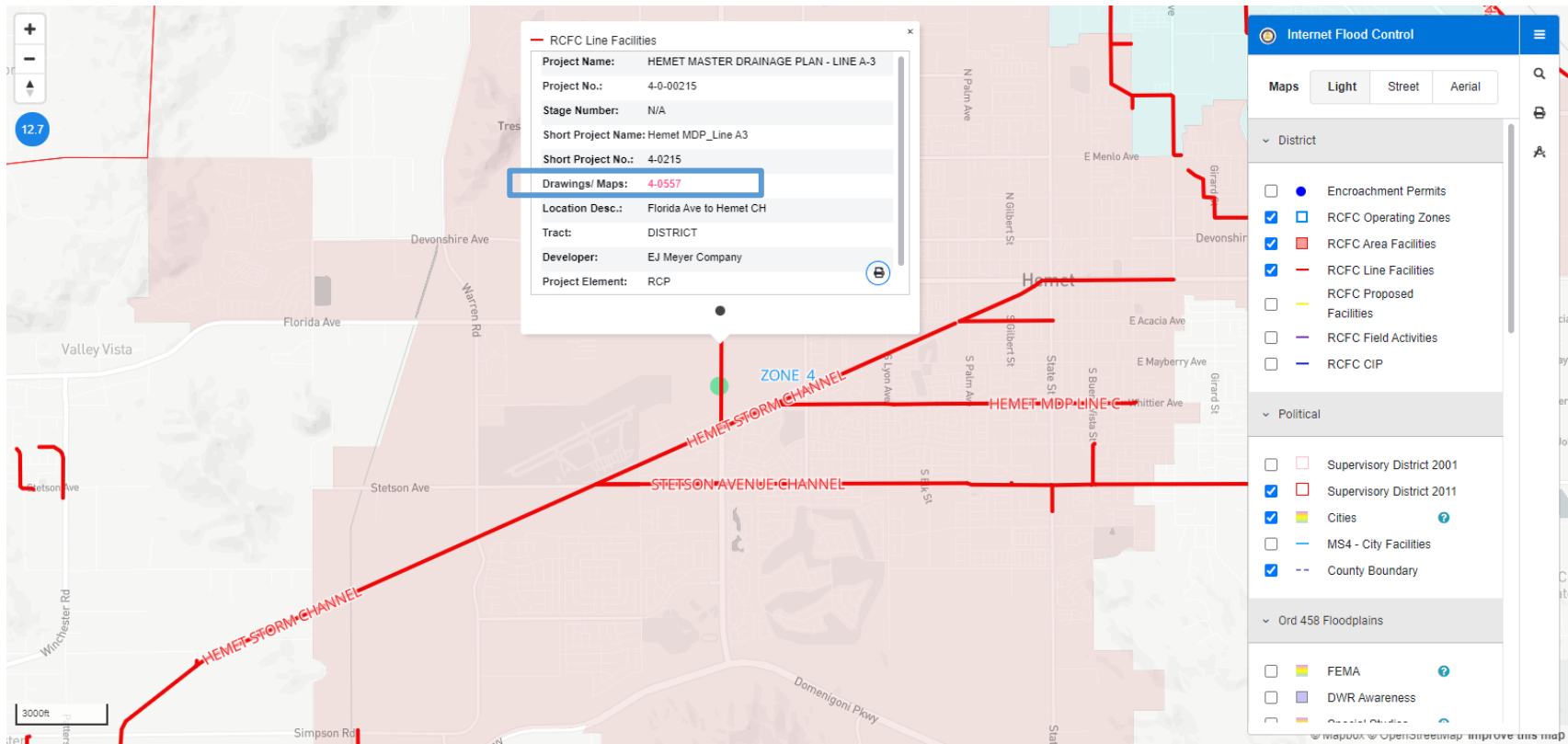


2. Navigate to the location of the facility you are interested in finding As-Built Drawings



3. Click on the facility of interest and select the "Drawings/Maps" number (e.g. 4-0557)





RCFC Line Facilities

Project Name:	HEMET MASTER DRAINAGE PLAN - LINE A-3
Project No.:	4-0-00215
Stage Number:	N/A
Short Project Name:	Hemet MDP_Line A3
Short Project No.:	4-0215
Drawings/ Maps:	4-0557
Location Desc.:	Florida Ave to Hemet CH
Tract:	DISTRICT
Developer:	EJ Meyer Company
Project Element:	RCP

Internet Flood Control

Maps: Light | Street | Aerial

District

- Encroachment Permits
- RCFC Operating Zones
- RCFC Area Facilities
- RCFC Line Facilities
- RCFC Proposed Facilities
- RCFC Field Activities
- RCFC CIP

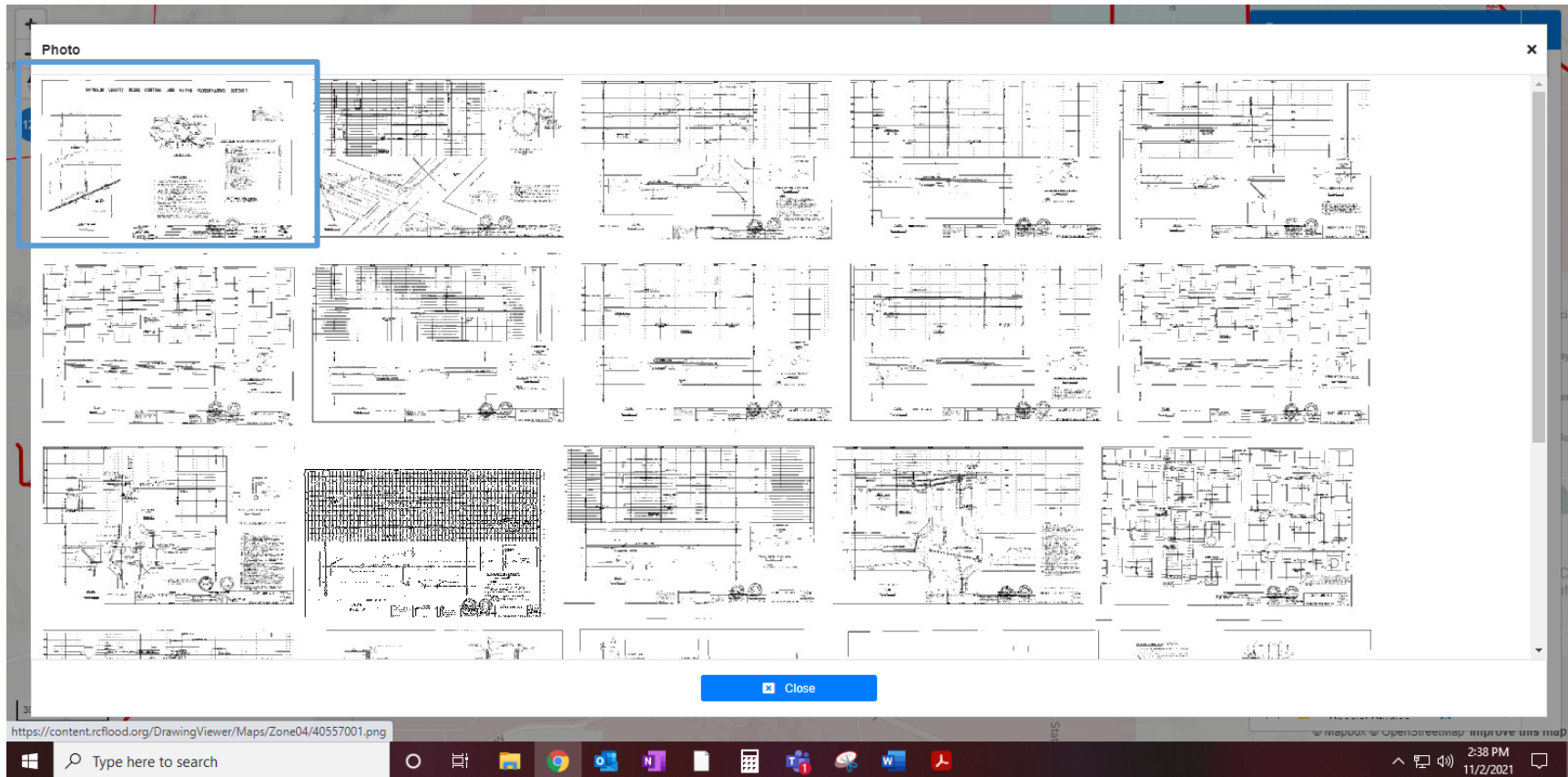
Political

- Supervisory District 2001
- Supervisory District 2011
- Cities
- MS4 - City Facilities
- County Boundary

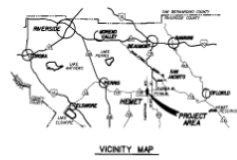
Ord 458 Floodplains

- FEMA
- DWR Awareness
- ArcSight Analysis

4. The As-Built will load and select the files to download.



RIVERSIDE COUNTY FLOOD CONTROL AND WATER CONSERVATION DISTRICT



GENERAL NOTES

1. TOPOGRAPHICAL AND EXISTING CONDITIONS ARE BASED ON R.C.F.C. PHOTOGRAPHIC DATA MAP NO. 200.
2. ALL SPREAD SECTIONS ARE IN ACCORDANCE WITH THE DISTRICT'S STANDARD SPECIFICATIONS.
3. ALL ELEVATIONS ARE IN FEET BASED ON U.S.C. & G.S. DATUM.
4. ALL STATIONS REFER TO CENTERLINE OF CONSTRUCTION.
5. LOCATIONS AND ELEVATIONS OF UTILITIES ARE APPROXIMATE UNLESS NOTED OTHERWISE TO BE EXACT.
6. ALL UTILITIES ARE PROTECTED IN PLACE UNLESS OTHERWISE NOTED.
7. EXISTING VEGETATION ARE TO BE REMOVED AND REPLACED WITH THE DISTRICT'S STANDARD SPECIFICATIONS.
8. EXISTING UTILITIES ARE TO BE REMOVED AND REPLACED WITH THE DISTRICT'S STANDARD SPECIFICATIONS.
9. FLORIDA HIGHWAY 74.
10. THE CONTRACTOR SHALL MAINTAIN THE 5% MINIMUM MINOR ADJUSTMENT TO THE DISTRICT'S STANDARD SPECIFICATIONS TO MAINTAIN THE 5% MINIMUM MINOR ADJUSTMENT TO THE DISTRICT'S STANDARD SPECIFICATIONS.
11. CARE SHALL BE TAKEN TO PROTECT ALL UTILITIES AND STRUCTURES IN AREAS WHERE THE DEPTH OF EXCAVATION IS GREATER THAN 5 FEET.

INDEX

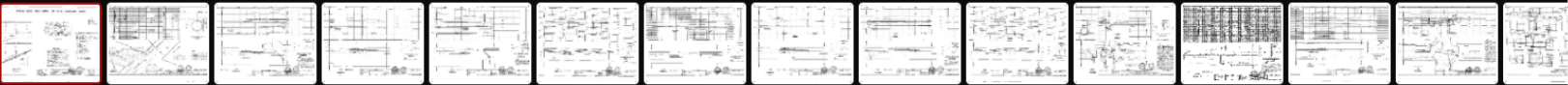
INDEX SHEET	1-24
PLAN & PROFILE	1-24
CONTRACT PROPOSAL	1-24
CONTRACT PROPOSAL DETAILS	1-24
TRAFFIC PLAN - DRAINAGE AID	1-24
TRAFFIC PLAN - STATE HIGHWAY	1-24

R.C.F.C. & W.C.D. STANDARD DRAWINGS

0000	CATCH BASIN NO. 1	20
0001	CATCH BASIN NO. 2	20
0002	CATCH BASIN NO. 3	20
0003	CATCH BASIN NO. 4	20
0004	CATCH BASIN NO. 5	20
0005	CATCH BASIN NO. 6	20
0006	CATCH BASIN NO. 7	20
0007	CATCH BASIN NO. 8	20
0008	CATCH BASIN NO. 9	20
0009	CATCH BASIN NO. 10	20
0010	CATCH BASIN NO. 11	20
0011	CATCH BASIN NO. 12	20
0012	CATCH BASIN NO. 13	20
0013	CATCH BASIN NO. 14	20
0014	CATCH BASIN NO. 15	20
0015	CATCH BASIN NO. 16	20
0016	CATCH BASIN NO. 17	20
0017	CATCH BASIN NO. 18	20
0018	CATCH BASIN NO. 19	20
0019	CATCH BASIN NO. 20	20
0020	CATCH BASIN NO. 21	20
0021	CATCH BASIN NO. 22	20
0022	CATCH BASIN NO. 23	20
0023	CATCH BASIN NO. 24	20
0024	CATCH BASIN NO. 25	20
0025	CATCH BASIN NO. 26	20
0026	CATCH BASIN NO. 27	20
0027	CATCH BASIN NO. 28	20
0028	CATCH BASIN NO. 29	20
0029	CATCH BASIN NO. 30	20
0030	CATCH BASIN NO. 31	20
0031	CATCH BASIN NO. 32	20
0032	CATCH BASIN NO. 33	20
0033	CATCH BASIN NO. 34	20
0034	CATCH BASIN NO. 35	20
0035	CATCH BASIN NO. 36	20
0036	CATCH BASIN NO. 37	20
0037	CATCH BASIN NO. 38	20
0038	CATCH BASIN NO. 39	20
0039	CATCH BASIN NO. 40	20
0040	CATCH BASIN NO. 41	20
0041	CATCH BASIN NO. 42	20
0042	CATCH BASIN NO. 43	20
0043	CATCH BASIN NO. 44	20
0044	CATCH BASIN NO. 45	20
0045	CATCH BASIN NO. 46	20
0046	CATCH BASIN NO. 47	20
0047	CATCH BASIN NO. 48	20
0048	CATCH BASIN NO. 49	20
0049	CATCH BASIN NO. 50	20

CALTRANS STD. DWGS.

SECTION 05 - CONCRETE



Close