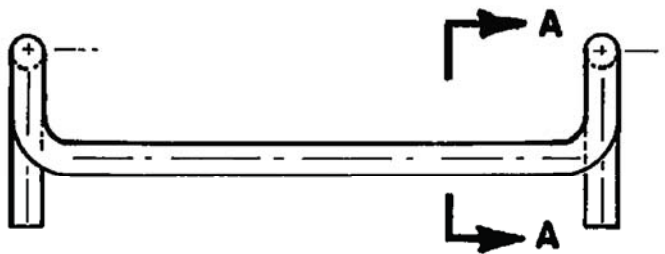


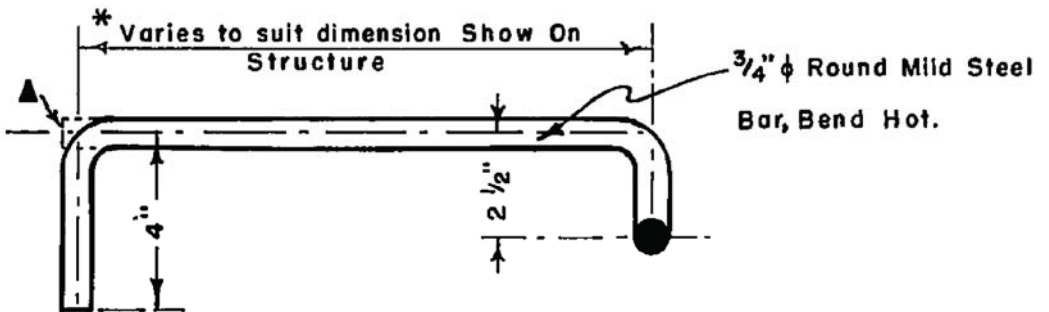
PLAN VIEW

Note

▲ = When steel forms are used eliminate hook and use upset end.



FRONT ELEVATION



**SECTION A-A
GALVANIZE AFTER BENDING**

NOTE :

**THIS DETAIL SHALL BE
USED WHEREVER STEPS
ARE REQUIRED.**

L.A.C.F.C.D. STD. NO. 2-096



RIVERSIDE COUNTY FLOOD CONTROL AND WATER CONSERVATION DISTRICT	
APPROVED BY:	<i>Warren D. Will Lays</i>
CHIEF ENGINEER	
DATE: April 5, 2004	

STANDARD DROP STEP
STANDARD DRAWING NUMBER MH259