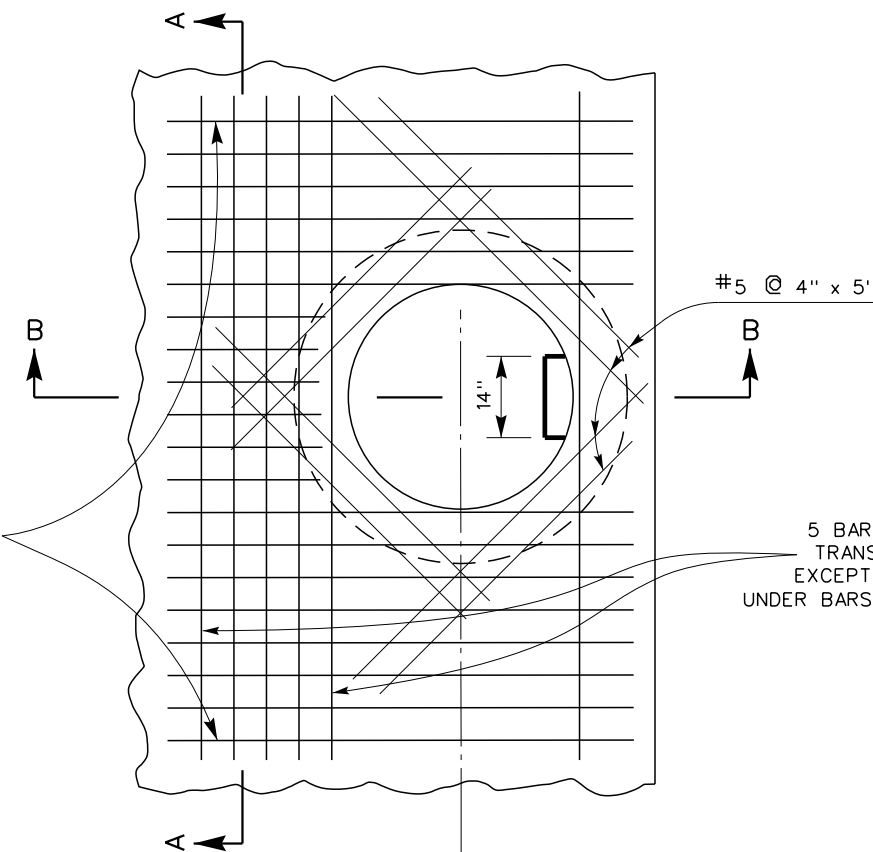


SECTION B-B
MANHOLE FOR BOX
SECTION STORM DRAIN
 NTS

SIZE AND SPACING OF STEEL AS SHOWN ON IMPROVEMENT PLAN, EXCEPT THAT 5 BARS ON EACH SIDE OF SHAFT SHALL BE NOT SMALLER THAN #5@4" OR EQUIVALENT

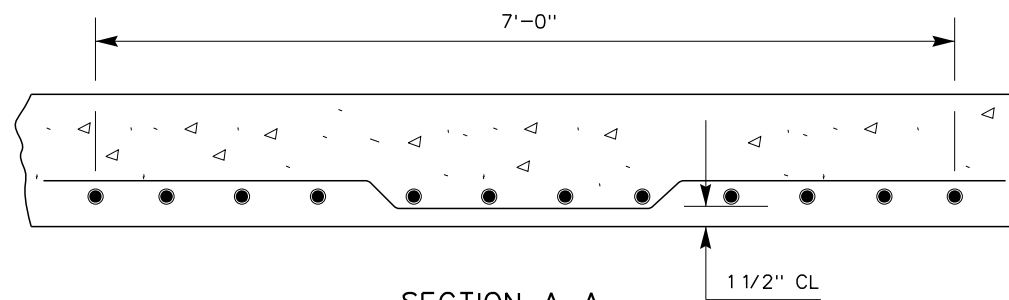


PLAN
 (SHAFT NOT SHOWN)
 NTS

5 BARS 7' LONG, 4" O.C. OF SIZE SHOWN FOR TRANSVERSE STEEL ON IMPROVEMENT PLAN, EXCEPT NOT LESS THAN #5. WARP THESE BARS UNDER BARS THAT HAVE BEEN CUT FOR SHAFT OPENING.

NOTE

1. DEPTH P: WHEN DEPTH P FROM STREET GRADE TO TOP OF PIPE SEAT IS LESS THAN 2' - 10 1/2" IN PAVED STREETS OR 3' - 6" IN UNPAVED STREETS, CONSTRUCT 2' DIAMETER SHAFT, USING CONCRETE RINGS AS PER STANDARD PLAN FOR CONCRETE RINGS; OTHERWISE, CONSTRUCT 3' SHAFT AS SHOWN ON THIS PLAN.
2. STATIONS SHOWN ON IMPROVEMENT PLANS REFER TO CENTER LINE OF SHAFT.
3. STEPS SHALL BE 3/4" ROUND GALVANIZED STEEL ANCHORED NOT LESS THAN 4" IN WALLS OF STRUCTURE AND UNLESS OTHERWISE SHOWN SHALL BE SPACED 16" ON CENTERS. THE LOWEST STEP SHALL BE NOT MORE THAN 2' ABOVE THE FLOOR.
4. WHERE PRESSURE MANHOLE NO. 3 IS SPECIFIED ON PLANS SEE STD DWG MH256 AND MH258.



SECTION A-A
 NTS

RIVERSIDE COUNTY FLOOD CONTROL AND WATER CONSERVATION DISTRICT		MANHOLE NO. 3
RECOMMENDED FOR APPROVAL BY: <i>[Signature]</i> CHIEF, DESIGN & CONSTRUCTION DATE: JANUARY 2011	APPROVED BY: <i>[Signature]</i> CHIEF ENGINEER DATE: JANUARY 2011	
R.E. No. 44684	R.C.E. No. 32336	STANDARD DRAWING NUMBER MH253