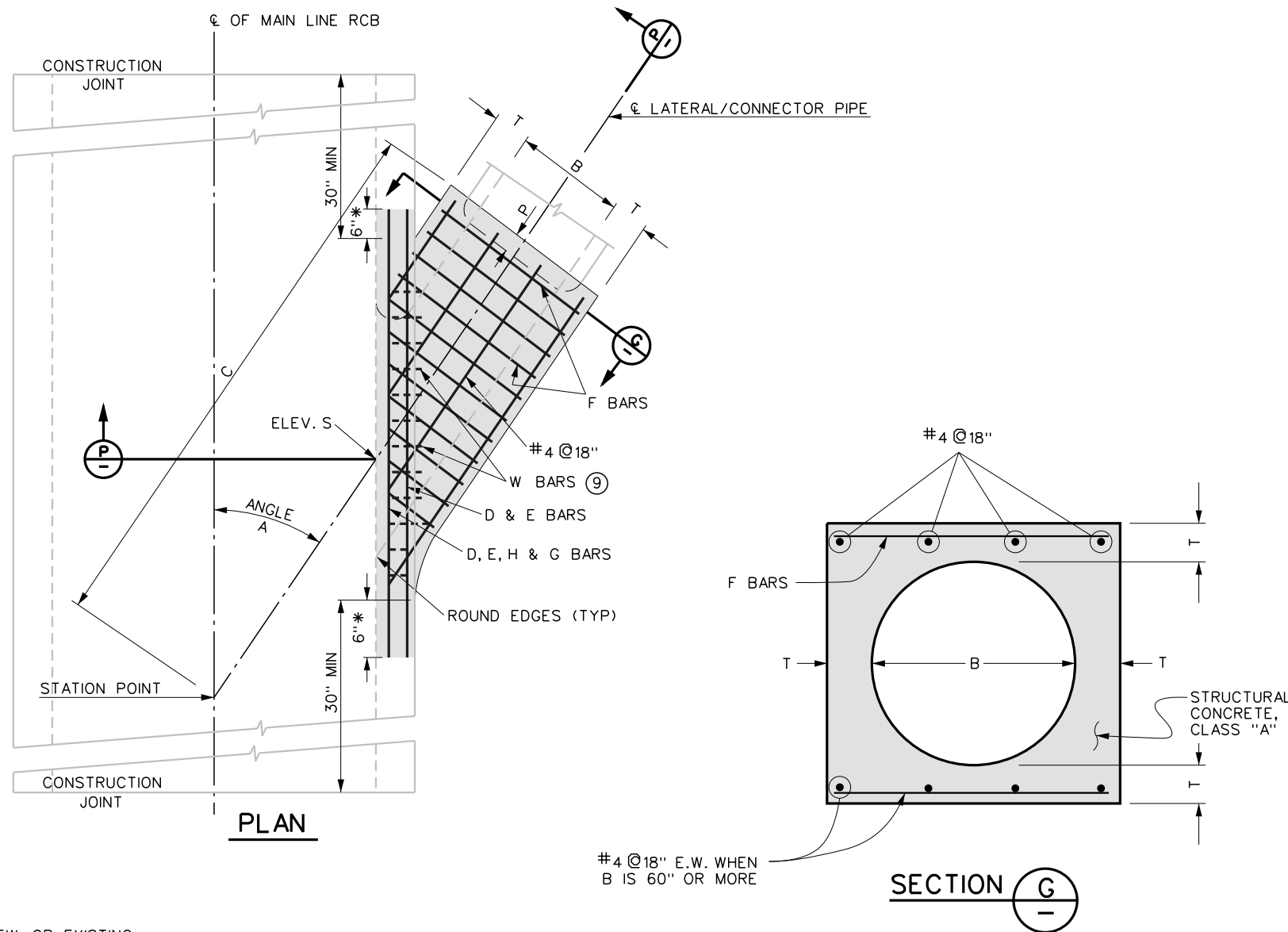


TABLES
FOR DIMENSIONS AND BAR SIZES

B (INCHES)	T (INCHES)	P (INCHES)
12	5	5
15	5	
18	5	
21	5	
24	5 1/4	
27	5 1/2	
30	6	
33	6 1/4	
36	6 1/2	
39	7	
#5		D,E,H AND G BARS
#4 @6"		F BARS

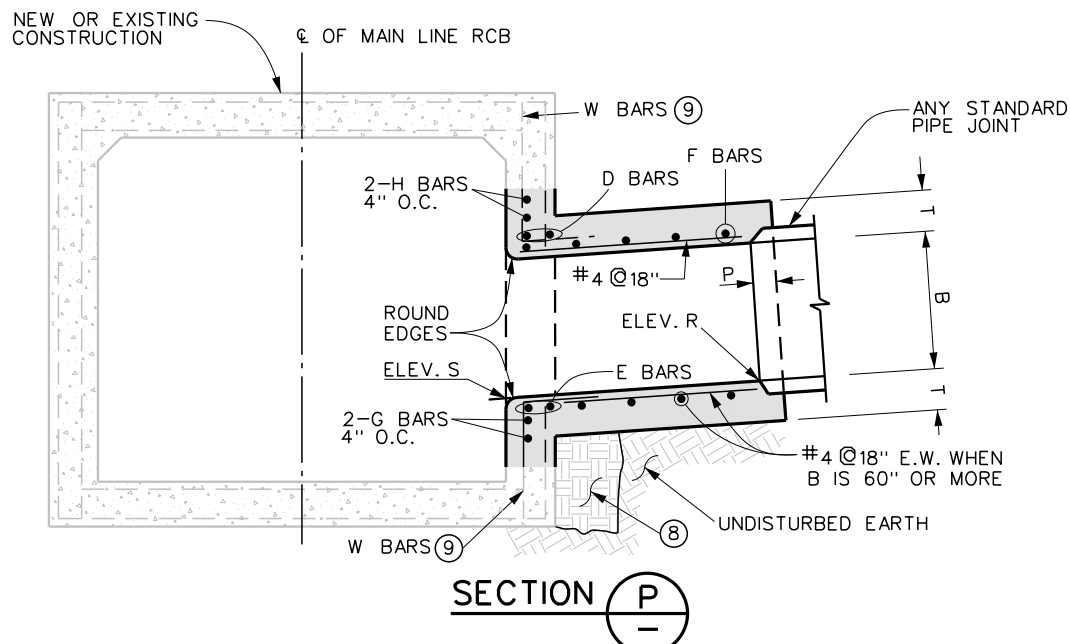
B (INCHES)	T (INCHES)	P (INCHES)
42	7 1/2	5
45	7 3/4	
48	8	
51	8 1/2	
54	9	
57	9 1/4	
60	9 1/2	
63	10	
66	10 1/4	
69	10 3/4	
#6		D,E,H AND G BARS
#5 @6"		F BARS

B (INCHES)	T (INCHES)	P (INCHES)	
90	13 1/4	5	
96	14		
102	15 1/2	8	
108	16		
114	16 1/2		
120	17		
126	17		
132	17 1/2		
138	17 1/2		
144	18		
#7			D,E,H AND G BARS
#6 @6"			F BARS

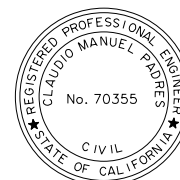
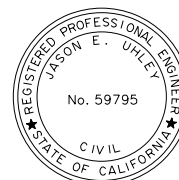


NOTES

- FOR NEW CAST-IN-PLACE CONSTRUCTION, JUNCTION STRUCTURE SHALL BE POURED MONOLITHICALLY WITH MAIN LINE STORM DRAIN, MANHOLE, OR TRANSITION.
 - THE NEED FOR AN EDGE BEAM AND/OR ADDITIONAL REINFORCEMENT SHALL BE INVESTIGATED BY THE ENGINEER FOR ANY ONE OF THE FOLLOWING CONDITIONS:
 - ANGLE A IS LESS THAN 30°
 - TOP OF INLET PIPE IS LESS THAN 6" BELOW THE SOFFIT.
 - FLOW LINE OF INLET PIPE IS LESS THAN 7" ABOVE THE FLOOR OF THE MAIN LINE AT THE INSIDE FACE.
 - VALUES FOR A, B, C, ELEV. R, AND ELEV. S SHALL BE SPECIFIED ON PROJECT DRAWINGS. VALUES FOR T ARE SHOWN IN TABLES HEREIN.
 - STATIONS SPECIFIED ON DRAWINGS APPLY AT THE INTERSECTION OF CENTER LINES OF MAIN LINE AND LATERALS, UNLESS OTHERWISE NOTED.
 - UNLESS OTHERWISE SHOWN, ALL REINFORCING STEEL SHALL BE NEW STRAIGHT, DEFORMED STEEL BARS AND SHALL BE KEPT 1 1/2" CLEAR FROM INSIDE FACE OF CONCRETE.
 - WHERE DESIGN VELOCITIES EXCEED 20 FT/SEC, CONCRETE COVER ON THE INSIDE FACE SHALL BE INCREASED TO PROVIDE ADDITIONAL COVER OVER THE REINFORCED STEEL AS SPECIFIED ON THE PROJECT DRAWINGS.
 - FLOOR OF STRUCTURE SHALL BE STEEL-TROWELED TO THE SPRING LINE.
 - PLACE CLASS B CONCRETE, OR COMPACT SOIL UNDER STRUCTURE TO RELATIVE DENSITY REQUIRED BY SPECIFICATIONS. FILL MAY BE OMITTED IF STRUCTURE IS LAID ON UNDISTURBED EARTH TO MAIN LINE WALL.
 - W BARS ARE MAIN LINE WALL STEEL (INTERIOR CURTAIN), AND SHALL BE CUT IN CENTER OF OPENING AND BENT INTO TOP AND BOTTOM OF JUNCTION STRUCTURE.
- * LIMITS OF EXISTING CONSTRUCTION REMOVAL.



L.A.C.F.C.D. STD. NO. 2-D189 (MODIFIED)



RIVERSIDE COUNTY FLOOD CONTROL AND WATER CONSERVATION DISTRICT	
APPROVED BY: <i>[Signature]</i> GENERAL MANAGER / CHIEF ENGINEER DATE: 7-2-2019	APPROVED BY: <i>[Signature]</i> CHIEF DESIGN & CONSTRUCTION DATE: 7-2-2019
R.C.E. NO. 59795	R.C.E. NO. 70355

JUNCTION STRUCTURE
NO. 1
STANDARD DRAWING NUMBER JS226
SHEET 1 OF 1