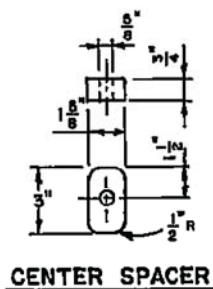


- NOTES**
- 1 - CENTER SUPPORT ASSEMBLY SHALL BE USED WHEN TWO OR MORE GRATINGS ARE SPECIFIED.
 - 2 - ALL BOLTS USED IN CENTER SUPPORT SHALL BE 1/2".
 - 3 - FRAME MAY BE RIVETED OR WELDED.
 - 4 - BOLTS (NOT RIVETS OR WELDS) SHALL BE USED TO JOIN TWO OR MORE FRAMES TOGETHER AND TO THE "H" BEAM.
 - 5 - DETAIL OF END SPACERS SHOWS FINISHED DIMENSIONS.
 - 6 - ALL PARTS SHALL BE OF STRUCTURAL GRADE STEEL, EXCEPT END SPACERS, WHICH MAY BE OF EITHER CAST IRON OR STEEL.
 - 7 - ALL EXPOSED METAL PARTS SHALL BE GALVANIZED PRIOR TO ASSEMBLY, WELDING, MACHINING, AND DRILLING SHALL BE DONE BEFORE GALVANIZING. ALL DIMENSIONS ARE FINISHED DIMENSIONS AND INCLUDE GALVANIZING.
 - 8 - TOTAL WEIGHT = 580 LBS. FOR GRATE SHOWN

44" LONG FOR CATCH BASIN - NO. 4 WITH GRATE AS SHOWN. 3
 42" LONG FOR CATCH BASIN - NO. 4 WITH CALTRANS GRATE.

W	GRATE TYPE
25 1/2"	AS SHOWN ABOVE
24"	CALTRANS STD. D77-B



CENTER SPACER



RIVERSIDE COUNTY FLOOD CONTROL
 AND
 WATER CONSERVATION DISTRICT

APPROVED BY: *Warren D. Williams*
 CHIEF ENGINEER

DATE: April 5, 2004

CATCH BASIN GRATE

STANDARD DRAWING NUMBER CB104

CITY OF RIV. STD. NO. 406
 CITY OF L.A. STD. NO. B-3656
 L.A.C.F.C.D. STD. NO. 2-D227