

M E M O R A N D U M

RIVERSIDE COUNTY FLOOD CONTROL
AND WATER CONSERVATION DISTRICT

TO: Steve Stump

DATE: March 11, 1988

FROM: Frank Peairs

FJP

RE: Proposed Standard Storm Drain Easement Widths

I have reviewed your proposed storm drain easement width chart and find it a big step forward. Although the widths provided are minimal, they probably would allow for repair or replacement of existing facilities. However, this would be at an extreme cost since no room is available alongside the trench for materials or equipment.

For easements where we (or some other agency) will have to construct a storm drain in the proposed easements after development has taken place, I recommend we require a minimum of 15' of temporary construction easement (20' would be better) on each side of the permanent easement. These would be relinquished after construction of the drain.

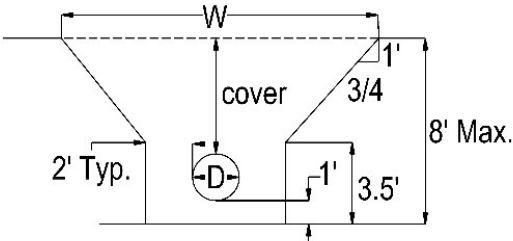
This chart should probably be incorporated into the Standards Manual when finalized.

FJP:sef
m310a

STORM DRAIN EASEMENT WIDTHS (FT.)

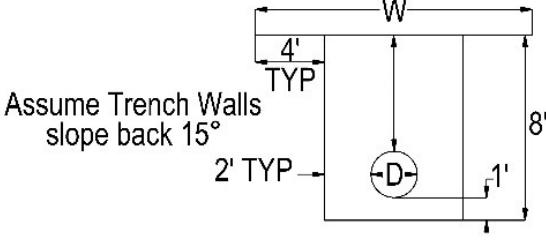
PIPE DIA. (in.)	COVER OVER PIPE (FEET)														
	SLOPED TRENCH ←						→ SHORED TRENCH								
	2	3	4	5	6	7	8	9	10	12	14	16	18	22	24
18	10	10	10	12	14	15	20	20	20	22	22	24	25	28	28
21	10	10	12	12	14	16	20	20	20	22	24	24	25	28	28
24	10	10	12	14	15	20	20	20	22	22	24	24	25	28	30
27	10	12	12	14	15	20	20	22	22	22	24	25	26	28	30
30	10	12	14	15	20	20	20	22	22	24	24	25	26	28	30
33	12	12	14	15	20	20	22	22	22	24	24	26	28	30	30
36	12	14	14	16	20	22	22	22	22	24	24	26	28	30	30
39	12	14	15	16	22	22	22	22	24	24	25	26	28	30	32
42	12	14	15	22	22	22	22	24	24	24	26	28	28	30	32
45	14	15	16	22	22	22	24	24	24	25	26	28	28	30	32
48	14	15	18	22	22	22	24	24	24	25	26	28	28	32	32
51	14	16	18	22	22	24	24	24	25	26	28	28	30	32	32
54	15	16	22	22	24	24	24	25	25	26	28	28	30	32	32
57	16	18	22	24	24	24	25	25	26	26	28	30	30	32	34
60	16	18	24	24	24	24	25	25	26	28	28	30	30	32	34
63	18	18	24	24	24	24	25	26	26	28	28	30	30	34	34
66	18	20	24	24	24	25	25	26	28	28	30	30	32	34	34
69	18	20	24	24	25	25	26	26	28	28	30	30	32	34	35
72	20	24	24	25	25	26	26	28	28	28	30	32	32	34	35
75	24	24	24	25	26	26	28	28	28	30	30	32	32	34	35
78	24	24	25	25	26	26	28	28	28	30	30	32	32	35	36
81	24	25	25	26	26	28	28	28	28	30	32	32	34	35	36
84	25	25	26	26	28	28	28	28	30	30	32	32	34	35	36
87	25	25	26	28	28	28	28	30	30	30	32	32	34	36	38
90	25	26	26	28	28	28	30	30	30	32	32	34	34	36	38
96	26	28	28	28	28	30	30	30	30	32	34	34	35	38	38
102	28	28	28	28	30	30	30	32	32	32	34	34	36	38	40
108	28	28	30	30	30	30	32	32	32	34	34	35	36	38	40
120	28	30	30	32	30	30	32	32	34	35	36	38	38	40	42

SLOPED TRENCH



$W = 1.54D + .54 \text{ cover} + 12.54$
Round in like manner

SHORED TRENCH



$W = 1.54D + .54 \text{ cover} + 12.54$
Round in like manner