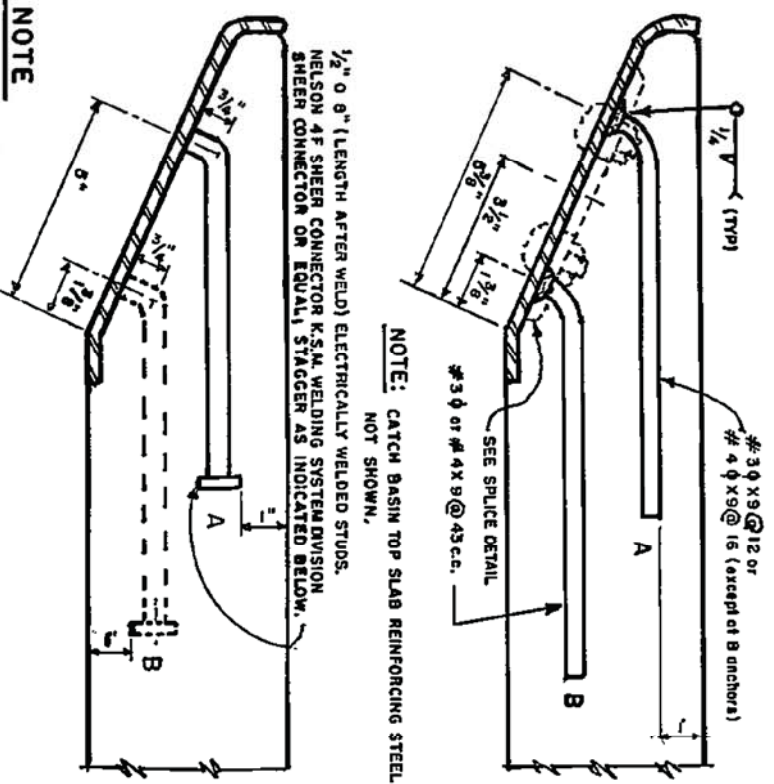


**DETAIL OF CATCH BASIN OPENING**

NOTE: "S" is the shortest distance between the sill of the catch basin and the center of the nearest protection bar. See Note 5.

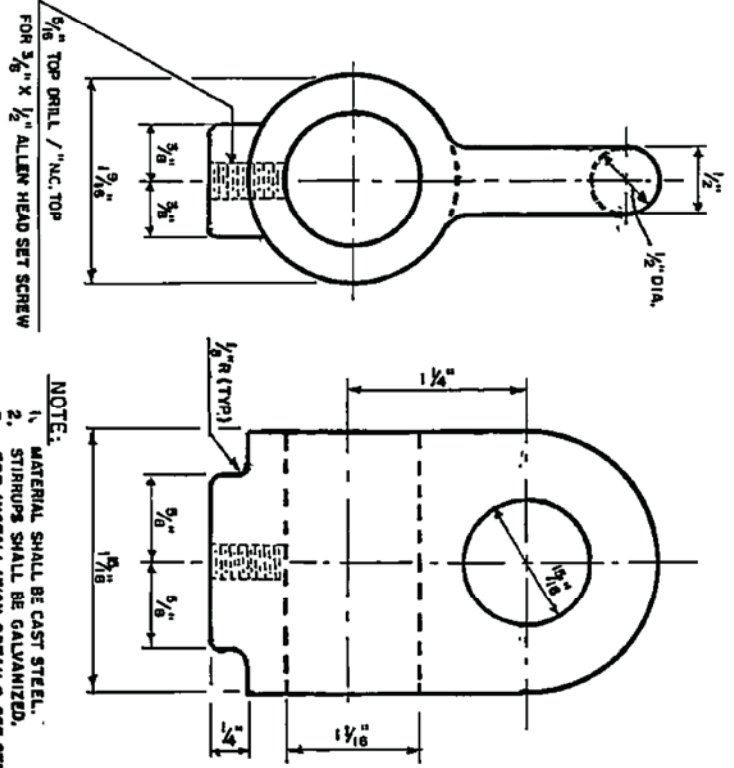


**FACE PLATE END & SPLICE DETAILS**

NOTE: Reinforcing Steel and Splice not shown Above Details. Space Anchors approximately evenly at 15 max. c.c. between end anchors and anchors at splice joints except omit at B anchor location. Space B anchors at approximately 45° max. between end anchors.

**ALTERNATE METHODS FOR FACE PLATE ANCHORAGE**

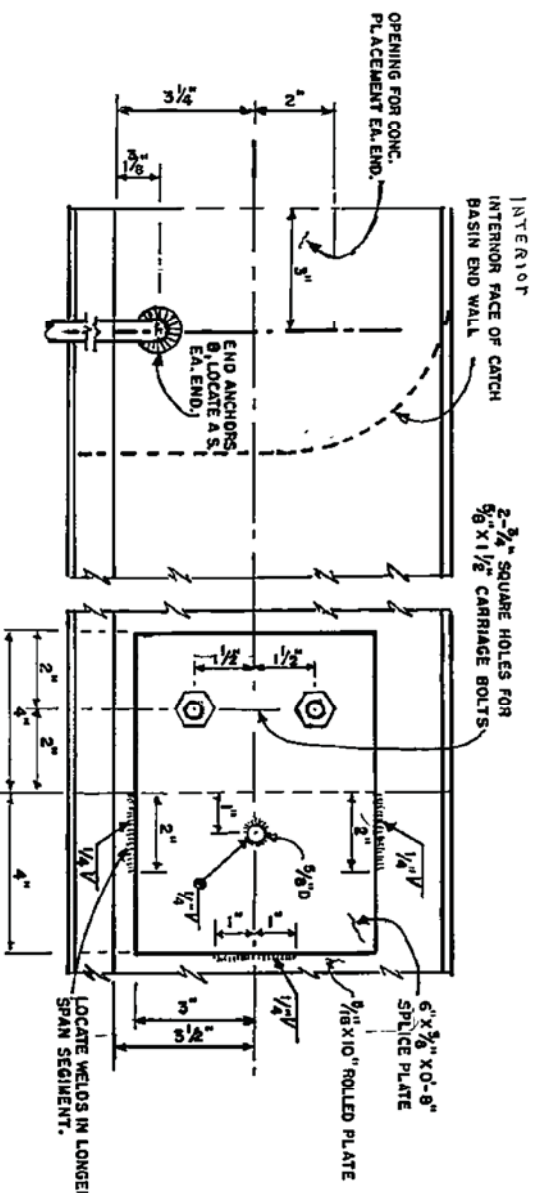
**ADJUSTABLE PROTECTION BAR STIRRUP**



NOTE:  
1. MATERIAL SHALL BE CAST STEEL.  
2. STIRRUPS SHALL BE GALVANIZED.  
3. FOR INSTALLATION DETAILS SEE STD.DWG. 2-D232.

**NOTES**

1. SUPPORT BOLT ANGLE  $\infty$  SHALL VARY TO CONFORM WITH BATTER OF ADJOINING CURB.
2. PROTECTION BAR SHALL BE INSTALLED AND SUPPORT BOLTS SPACED, ACCORDING TO SHEET 2 OF 2.
3. SUPPORT BOLTS SHALL BE EQUAL IN LENGTH TO CURB FACE + 4" ± FOR ALL CURB BATTERS.
4. ALL EXPOSED METAL PARTS SHALL GALVANIZED AFTER FABRICATION
5. PROTECTION BAR SPACING, PROTECTION BAR "S" SHALL BE INSTALLED WHEN THE MINIMUM CLEAR OPENING OF THE CATCH BASIN EXCEEDS 6" BAR "S" SHALL BE PLACED SUCH THAT NO MINIMUM CLEAR OPENING EXCEED 6".
  - (A) WHEN ONE BAR IS REQUIRED "S" SHALL BE 6 3/4" HOWEVER THIS SHALL BE REDUCED IF NECESSARY SO THAT THE CENTER OF THE PROTECTION BAR IS NOT LESS THAN 2 1/4" FROM THE ROLLED PLATE.
  - (B) WHEN TWO OR MORE BARS ARE REQUIRED "S" SHALL BE 6 3/4" WITH REMAINING BARS SPACED AT 6 3/4" c.c. THE SPACING OF TOP BAR SHALL BE REDUCED IF NECESSARY SO THAT THE CENTER OF THE BAR IS NOT LESS THAN 2 1/2" FROM THE ROLLED PLATE.
6. WHERE CATCH BASIN ARE TO BE CONSTRUCTED ON CURVES, THE MAXIMUM CHORD LENGTH FOR FACE PLATE SHALL BE SUCH THAT THE MAXIMUM DIMENSION FROM SAID CHORD (MEASURED PERPENDICULAR THERETO) TO THE TRUE CURVE WILL NOT EXCEED ONE INCH, WHERE MORE THAN ONE CHORD IS REQUIRED, CHORD LENGTH SHALL BE EQUAL.
7. SECTIONS LENGTH OF FACE PLATE IS BETWEEN 22' AND 45', TWO SECTIONS MAY BE USED WHEN LENGTH EXCEEDS 45', THREE SECTIONS MAY BE USED. SECTIONS SHALL BE SPLICED ACCORDING TO THE SPLICE DETAIL. SPLICE SHALL BE PLACED ONE FOOT FROM SUPPORT BOLT SEE SHEET 2 OF 2.
8. LENGTH OF FACE PLATE IS W + 12" FOR ALL CATCH BASINS EXCEPT THE DRIVEWAY CATCH BASIN.
9. CATCH BASIN OPENING = NORMAL CURB FACE + 4" INCHES UNLESS OTHERWISE SPECIFIED.
10. **SPACING OF ALL ANCHORAGE**
  - a. SET END ANCHORS 3" FROM ENDS OF FACE PLATE.
  - b. PLACE ONE A ANCHOR AT EACH SIDE OF ANY AND ALL SPLICE JOINTS AND WITHIN 6" THEREOF.



APPROVED BY: *Warren D. Williams*  
 CIVIL ENGINEER  
 DATE: April 5, 2004

RIVERSIDE COUNTY FLOOD CONTROL  
 WATER CONSERVATION DISTRICT  
 DETAIL OF CATCH BASIN  
 OPENING &  
 INSTALLATION DETAILS  
 STANDARD DRAWING NUMBER CB105  
 SHEET NO. 1 OF 2